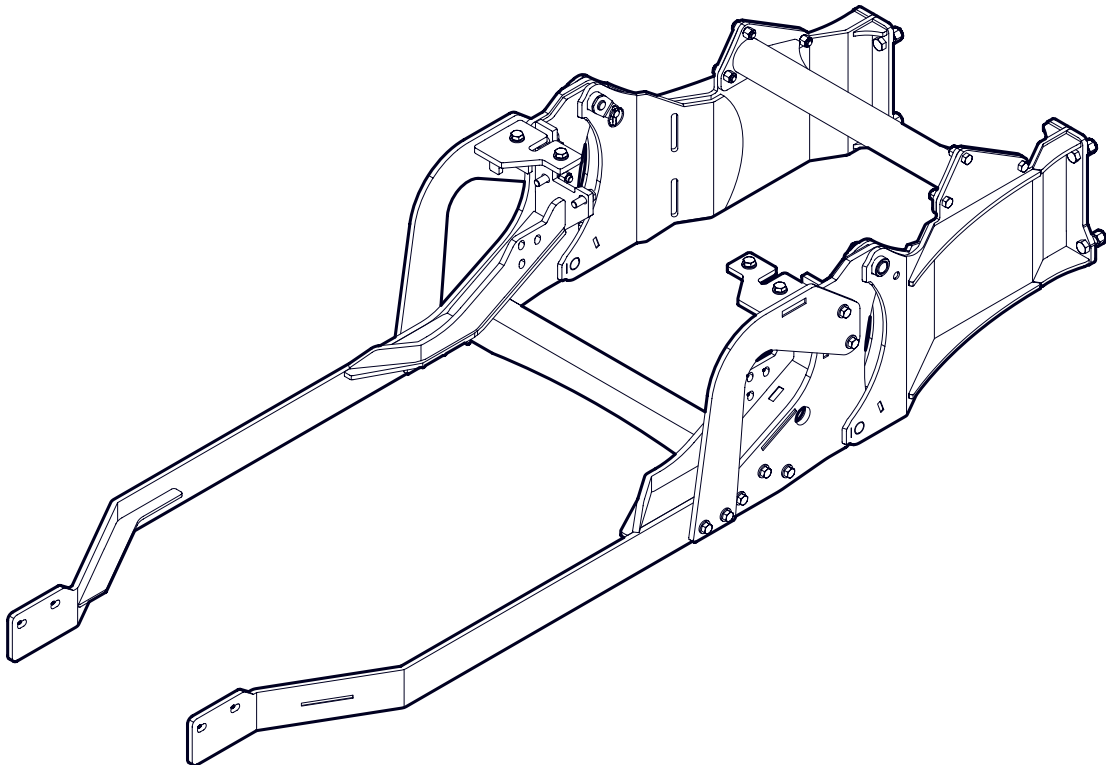


INSTALLATION INSTRUCTIONS

3683A750 Backhoe Subframe Kit



Introduction

This subframe is designed to work with Wallenstein Backhoes.

The Wallenstein backhoe is designed to work with a wide variety of tractors. With this Subframe Kit you can easily and quickly attach and detach your Wallenstein backhoe to your tractor.

Some of the illustrations shown in this manual are general, but important features are detailed in order to install your kit successfully.

Please review the backhoe operators manual. Safe, efficient and trouble free operation of your Wallenstein Backhoe requires that you and anyone else who will be operating or maintaining the machine, read and understand the Safety, Operation, Maintenance and Trouble Shooting information contained within the Operator's Manual.

IMPORTANT! This installation kit includes both metric and Imperial fasteners. Bolt type is identified by looking at the bolt head markings.

Metric



Imperial



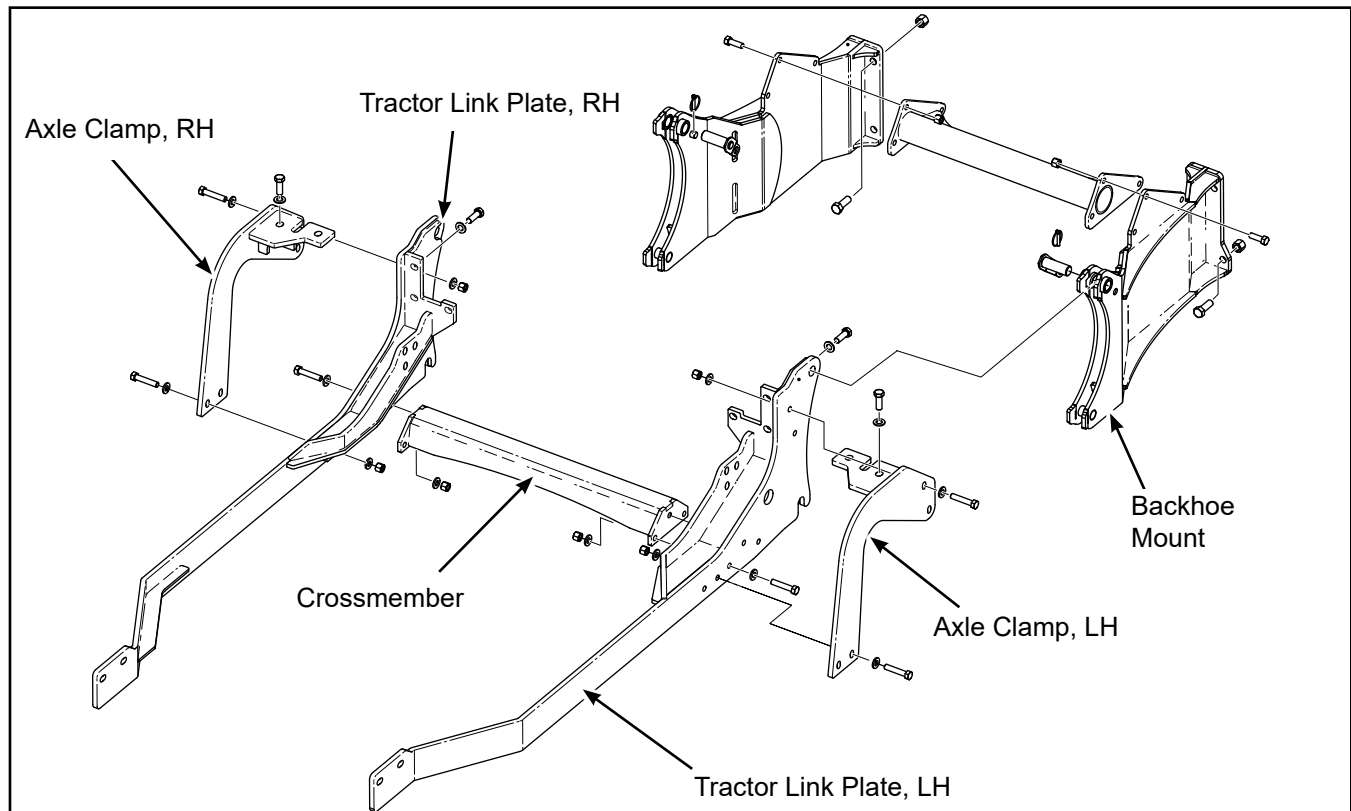
SAE Gr. 2

SAE Gr. 5

SAE Gr. 8

Operator Orientation

The directions left, right, front and rear as mentioned throughout this instruction, are determined when sitting in the tractor driver's seat, facing the direction of forward travel.



Subframe Main Components

Safety Rules

WARNING!

ATTENTION! BE ALERT! YOUR SAFETY IS INVOLVED!

Working around equipment can be dangerous. Always be aware of bystanders, the area around the machine, and what to do in case of emergency.

Learn how to install and operate the new equipment safely. Read and understand these instructions before attempting installation.

W007

WARNING!

Before operating the backhoe:

- Check that all pins and adapter plates are secure and correctly attached to the sub-frame.
- Ensure that all fasteners are correctly torqued according to the bolt torque table.
- Inspect and test all hydraulic connections.
- Thoroughly read the backhoe operator's manual for safe operation.

W008

WARNING!

Make sure the tractor is parked on a level surface with the front wheels chocked to prevent movement. Use properly rated jack stands to support the tractor.

W009

WARNING!

Make sure the subframe, backhoe and tractor are positioned on dry, level ground. The area around them should be clear and free of debris. Make sure the tractor is shut off, the brake is applied, and key is removed.

WARNING!

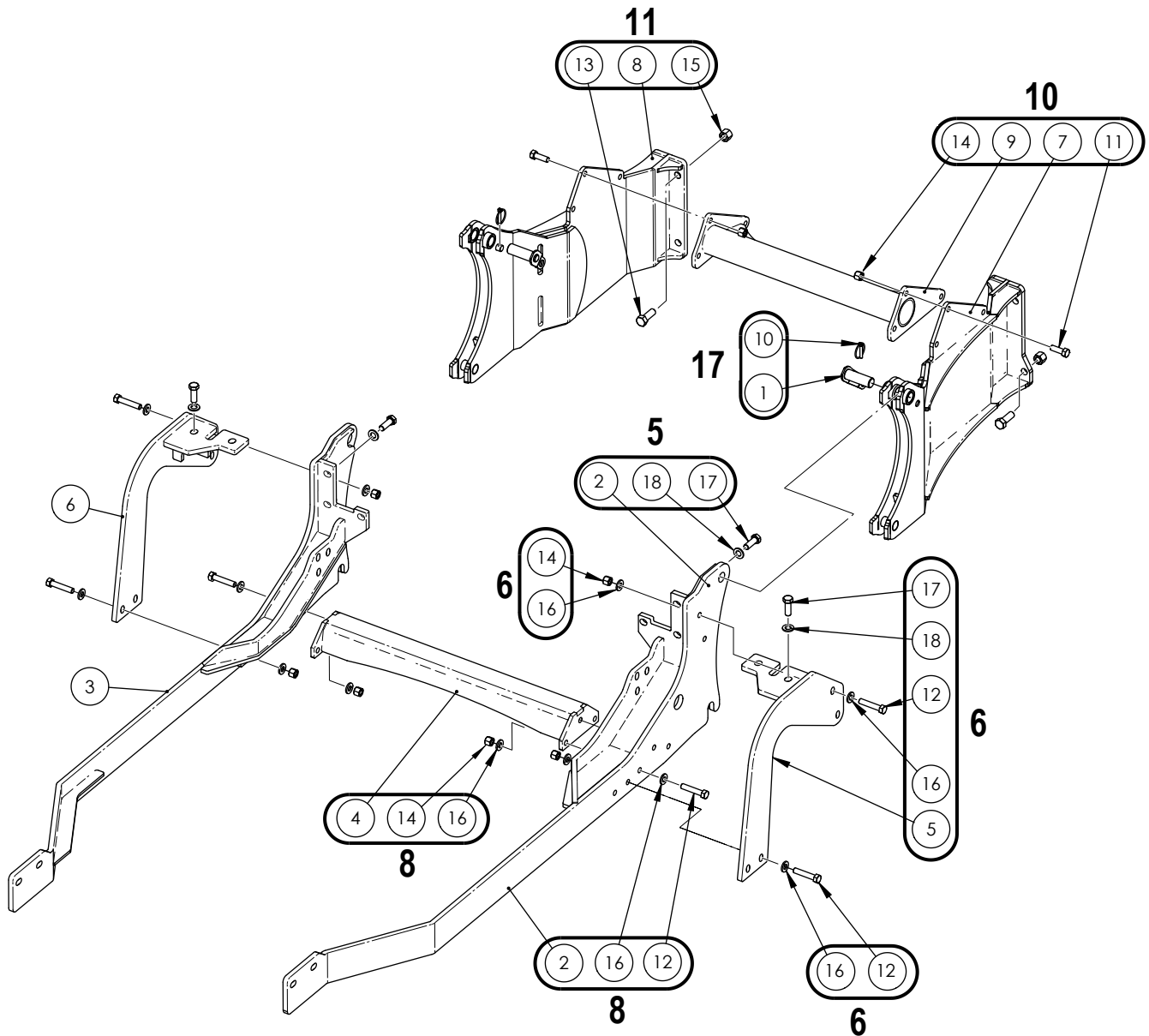
Review and understand the operating instructions for the backhoe. Part of the installation process includes operating the hydraulics to position the attachment points on the tractor.

WARNING!

Proceed with caution. During the course of assembly, the ROPS / cab support bolts are removed. Support for the cab may be required when removing cab mounting bolts. Remove and replace bolts one side at a time.

- Do not install backhoe and required counterweights on tractor if the total tractor and equipment weight exceeds the tractor ROPS weight certification.
- Make sure equipment is properly mounted, adjusted and in good operating condition.
- Make sure that all safety shielding and safety signs are properly installed and in good condition.

Subframe Kit Parts



All parts and hardware shown in the Subframe Kit Parts illustration are included in the kit. Make sure the parts are not damaged from shipping.



Illustration shows grouped Assembly Steps.

Item	Part Number	Description	Quantity
1	3600W101	Subframe Top Pin	2
2	3683W751	Plate, Tractor Link LH	1
3	3683W751H	Plate, Tractor Link RH	1
4	3683W752	Cross Brace Support	1
5	3683W753	Axle Clamp, LH	1
6	3683W753H	Axle Clamp, RH	1
7	3683W780	Backhoe Link, RH	1
8	3683W780H	Backhoe Link, LH	1
9	3683W781	Crossmember	1

Item	Part Number	Description	Quantity
10	Z12120	Lynch Pin	2
11	Z71515	Hex Bolt, 1/2"NC x 1-1/2"	6
12	Z71525	Hex Bolt, 1/2NC x 2-1/2	14
13	Z71617	Hex Bolt, 5/8NC x 1-3/4"	8
14	Z72251	Hex Lock Nut, 1/2NC	20
15	Z72261	Hex Lock Nut, 5/8NC	8
16	Z73151	SAE Washer, 1/2"	28
17	Z77182	Hex Bolt, M14 x 2.0 x 40 mm	10
18	Z77381	DIN 125 Washer, M14	10

Preparation:



Removing the rear tractor wheels can make the installation easier.

Position the tractor with the backhoe lined up behind it.

- Backhoe should be assembled but left on the shipping skid.
- The tractor must have a front bucket loader installed. The front loader is required to offset the weight of the backhoe, as well as provide the stability required to operate the backhoe safely.
- The loader should be in the lowered position, resting on the ground.

Tools required:

- Basic shop tools
- 3/4", 15/16" wrenches and sockets
- M21 wrenches and sockets
- Overhead lifting device
- Jack stands
- Torque wrench

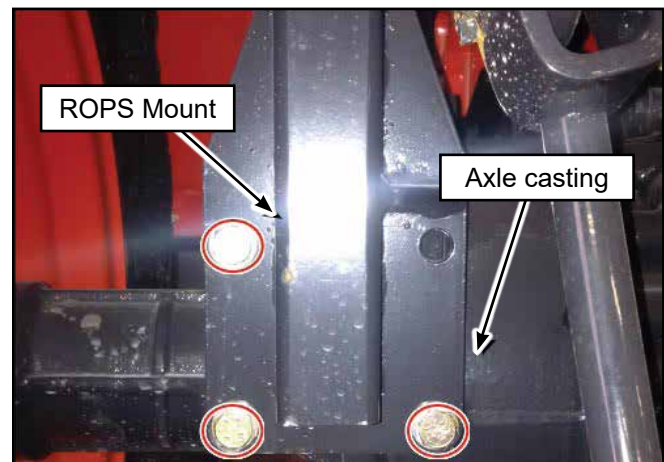
Step 1

Starting on the left-hand side of the tractor, disconnect the adjustable stabilizer arm from the mount underneath the axle.

Remove the anti-sway bars from the ROPS mounts and swing the lift arms in as far as they can go. Secure them in that position to keep them out of the way.

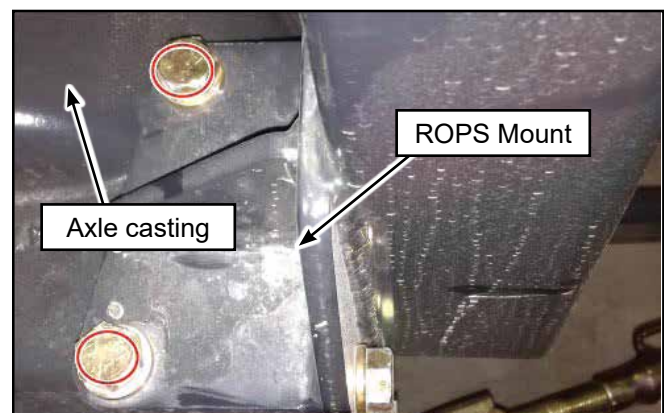
Step 2

Remove the three rear bolts holding the ROPS mount to the axle, as circled in the picture.



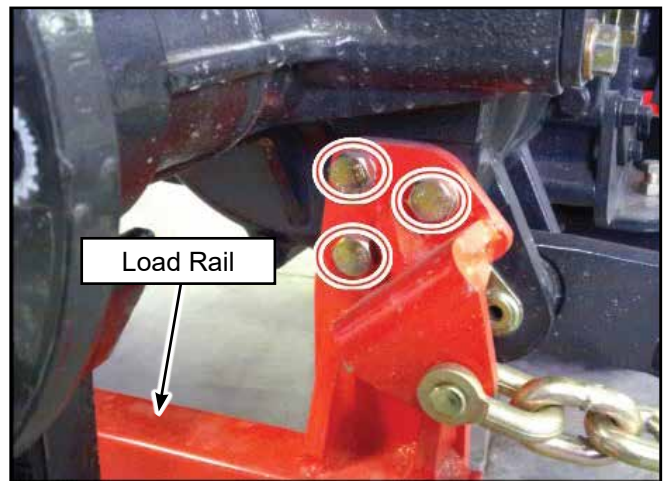
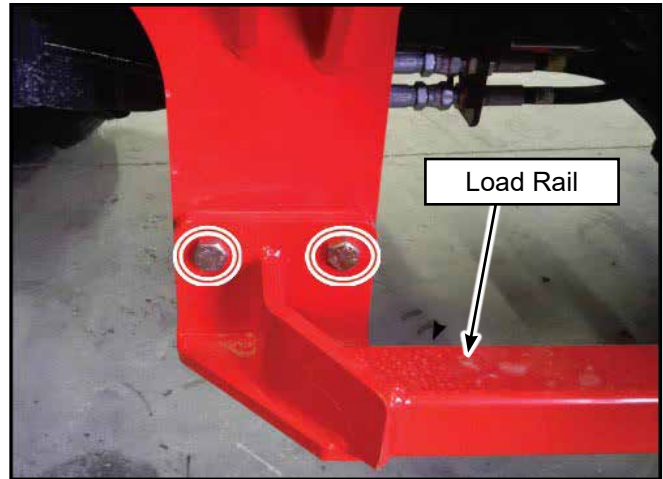
Step 3

Remove the two top bolts holding the ROPS mount to the axle, as circled in the picture.



Step 4

Remove the five bolts of the left load rail, as circled in the pictures. Set the load rail aside. Keep the fasteners for reassembly.



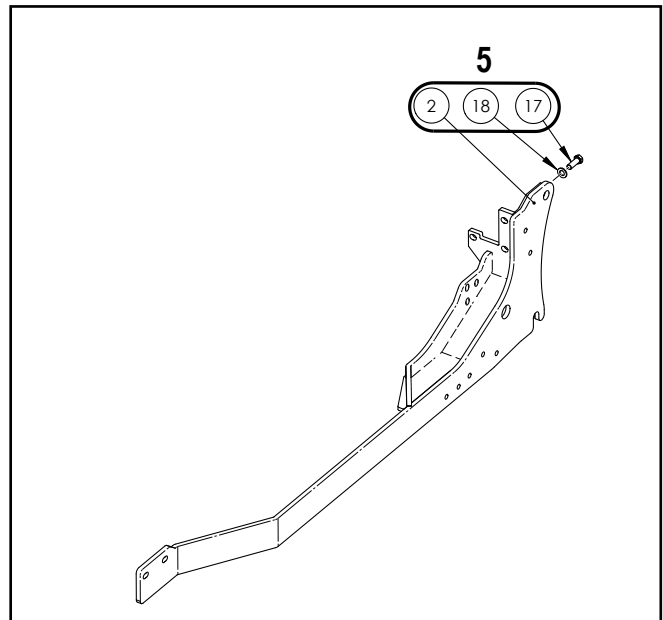
Step 5

See Parts Illustration on page 4 identifying Step 5.

Place item 2 (**3683W751**) Tractor Link Plate, LH underneath the axle against the ROPS mount.

Use three of item 17 (**Z77182** Hex bolt M14 x 2.0 x 40 mm) and Item 18 (**Z77381** M14 Flastwasher). Reinstall the hardware removed in Step 4.

Hand tighten only at this time.



Step 6

See Parts Illustration on page 4 identifying Step 6.

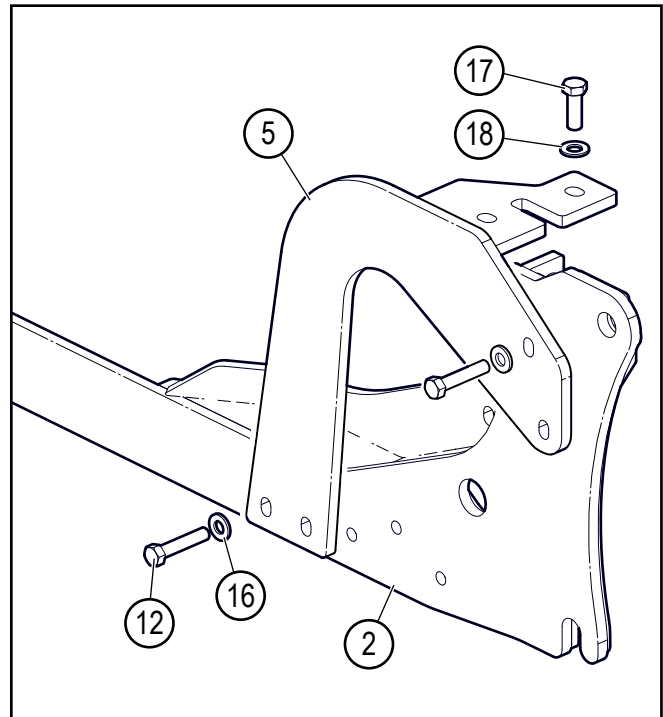
Place Axle Clamp item 5 (**3683W753**) brace over axle and against ROPS mount and tie together with Tractor Link Plate, LH. Make sure Axle Clamp sits flat on top of the ROPS mount.

To bolt to the axle, use item 17 (**Z77182** Hex bolts M14 x 2.0 x 40 mm) and Item 18 (**Z77381** M14 Flastwashers). Hand tighten only at this time.

At the side connections, use item 12 (**Z71525** Hex bolts 1/2"NC x 2-1/2"), item 16 (**Z73151** 1/2" Flatwashers), and item 14 (**Z72251** 1/2"NC Hex locknut). Hand tighten only at this time.

Step 7

Perform Steps 1–6 on the right-hand side of the tractor.



Step 8

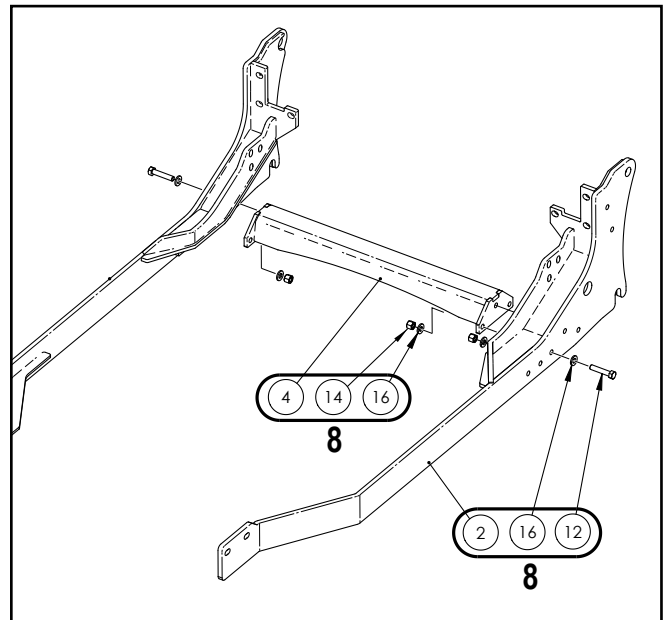
Install the Cross Brace Support item 4 (3683W752) between the two Tractor Plates. Use item 12 (**Z71525** Hex bolts 1/2"NC x 2-1/2"), item 16 (**Z73151** 1/2" Flatwashers), and item 14 (**Z72251** 1/2"NC Hex locknut).

Step 9

Re-install the wheels if removed and torque lug nuts/bolts (see torque chart or tractor owner's manual). Note that depending on the wheels it may be necessary to reverse the offset for clearance to the subframe.

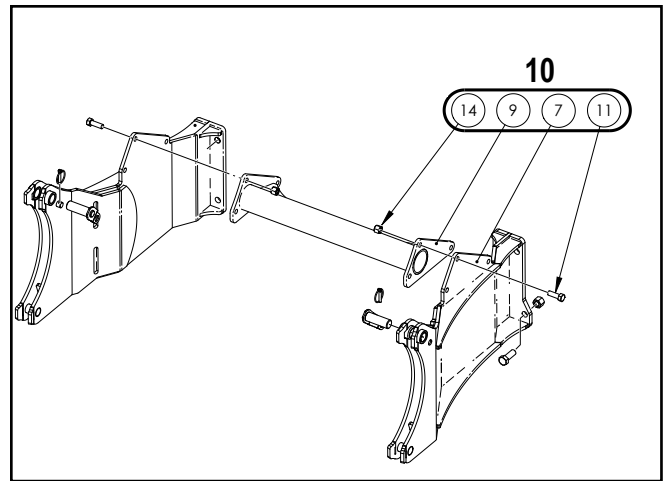
Reconnect the adjustable stabilizer arms.

The subframe should remain on the tractor and not be removed. Check that the lift arms move freely with the subframe installed.



Step 10

If not already assembled, the Backhoe Mount can be put together.



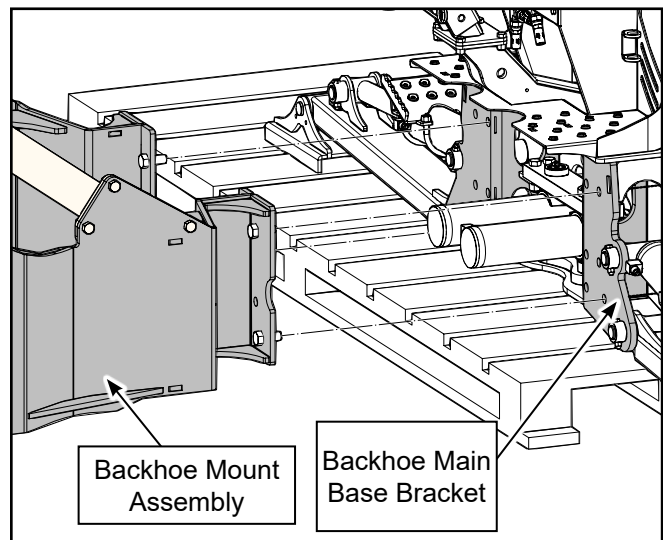
Step 11

Take the backhoe subframe mount and attach it to the backhoe on main base bracket. Use the 5/8" NC bolts and nuts provided — 4 for each left- and right-hand sides.

Torque-tighten bolts to 160 lbf•ft (215 N•m).

Step 12

Align and reverse the tractor up to the bracket. Get close enough to attach the hydraulic hoses to the backhoe.



Step 13

Attach the hydraulic lines from the backhoe to the tractor. See illustration.

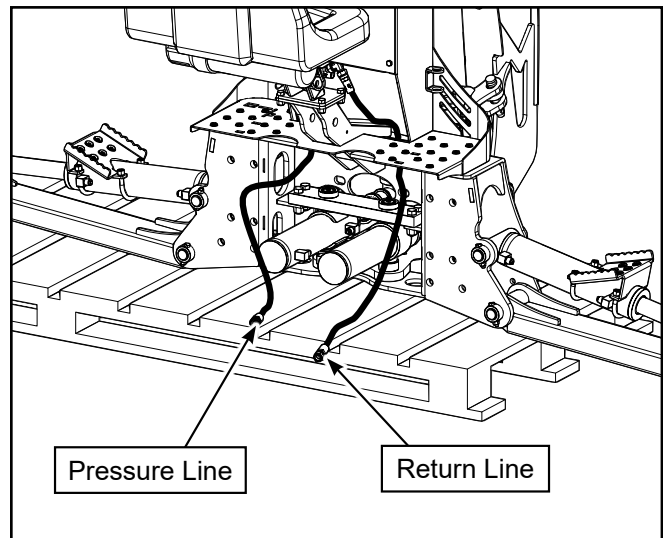


NOTE: The backhoe is equipped with a directional control valve and does not allow reverse flow if pressure and return lines are connected incorrectly.



WARNING!

When operating the boom and stabilizers, ensure the area is clear of bystanders and operator is safely positioned.

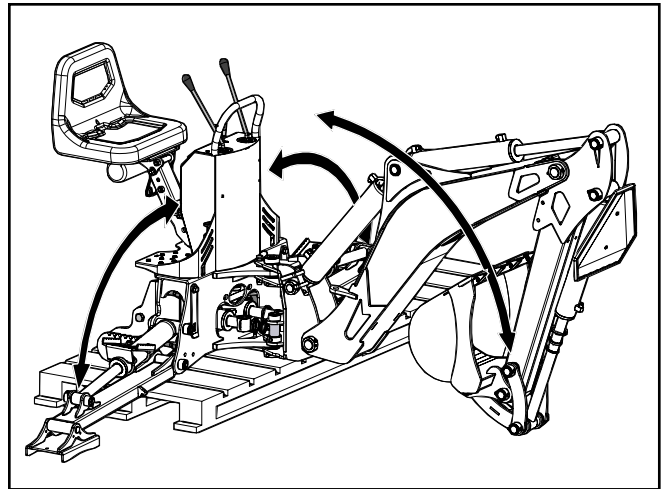


Step 14

Carefully use the dipper arm / stabilizer legs to tilt the bracket / backhoe on an angle, so that the bottom attach points line up with the hooks on the bottom of the subframe on the tractor.

Step 15

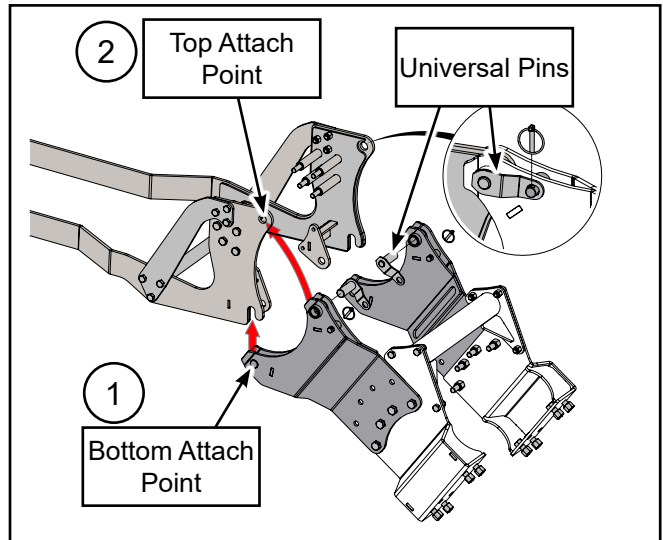
Carefully use the backhoe hydraulics to raise the bracket assembly into the bottom of the hooks for positive attachment.

**Step 16**

Carefully use the backhoe hydraulics to rotate the bracket assembly into the top attach points on the subframe. Rotate the bracket until it reaches the stop. The pin holes will then be aligned.

Step 17

Insert the two welded universal pins into the pin holes and secure with lynch pins.



Generic illustration showing hitching principal.

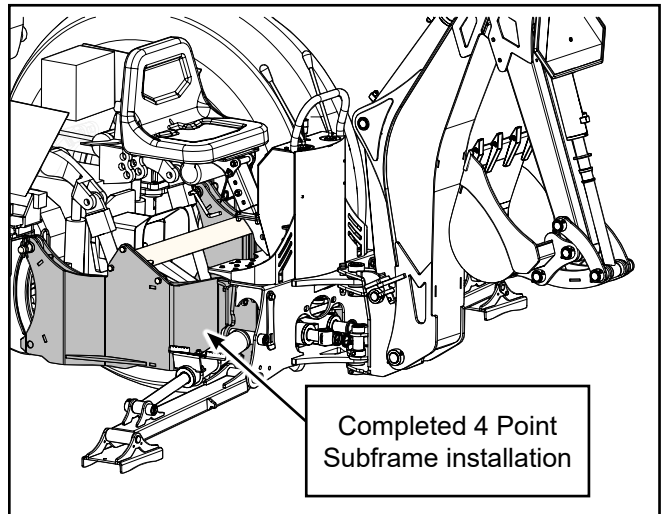
Step 18

Check that all attach points are secure, and make sure all bolts / nuts are tightened and torqued.

Test the hydraulics: lift the stabilizer legs and remove the skid. Lower the stabilizers and test all boom functions.

Check that all moving parts have clearance and do not interfere with the subframe.

The subframe installation is now complete.



Common Bolt Torque values

Checking Bolt Torque

The tables shown give correct torque values for various bolts and capscrews. Tighten all bolts to the torque values specified in the table, unless indicated otherwise. Check tightness of bolts periodically.

IMPORTANT! If replacing hardware, use fasteners of the same grade.

IMPORTANT! Torque figures indicated in the table are for non-greased or non-oiled threads. Do not grease or oil threads unless indicated otherwise. When using a thread locker, increase torque values by 5%.



NOTE: Bolt grades are identified by their head markings.

Imperial Bolt Torque Specifications						
Bolt Diameter	Torque Value					
	SAE Gr. 2		SAE Gr. 5		SAE Gr. 8	
	lbf•ft	N•m	lbf•ft	N•m	lbf•ft	N•m
1/4"	6	8	9	12	12	17
5/16"	10	13	19	25	27	36
3/8"	20	27	33	45	45	63
7/16"	30	41	53	72	75	100
1/2"	45	61	80	110	115	155
9/16"	60	95	115	155	165	220
5/8"	95	128	160	215	220	305
3/4"	165	225	290	390	400	540
7/8"	170	230	420	570	650	880
1"	225	345	630	850	970	1320



SAE Gr. 2



SAE Gr. 5



SAE Gr. 8

Metric Bolt Torque Specifications				
Bolt Diameter	Torque Value			
	Gr. 8.8		Gr. 10.9	
	lbf•ft	N•m	lbf•ft	N•m
M3	0.4	0.5	1.3	1.8
M4	2.2	3	3.3	4.5
M6	7	10	11	15
M8	18	25	26	35
M10	37	50	52	70
M12	66	90	92	125
M14	83	112	116	158
M16	166	225	229	310
M20	321	435	450	610
M30	1,103	1 495	1,550	2 100



8.8



10.9