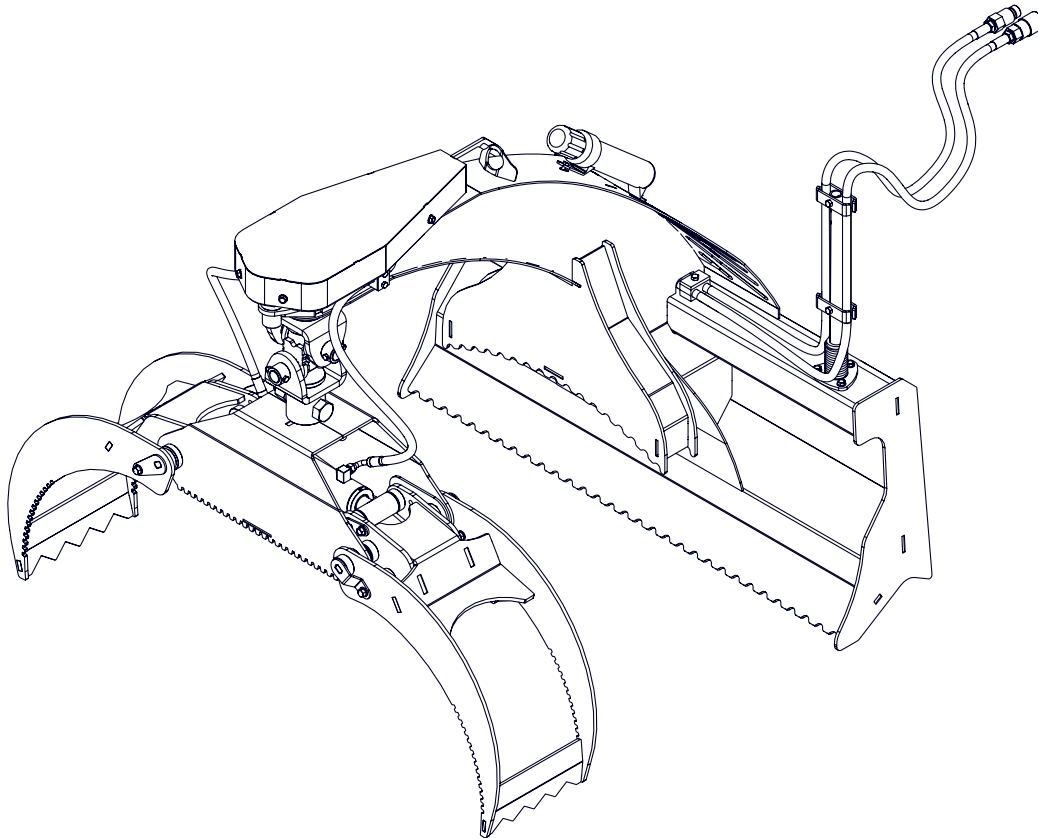




EMB Manufacturing Inc.
4144 Boomer Line · St. Clements, On · N0B 2M0 · Canada
Ph: (519) 699-9283 · Fax: (519) 699-4146
www.wallensteinequipment.com

LXG210S & LXG210SB Mini Skid Steer Grapple

Starting with S/N's
210S001 and on



Refer to the operators
manual for safe
operation and
maintenance

Foreword

EMB Mfg. has prepared this parts manual to assist customers in ordering quality OEM replacement parts.

Proper and regular service and replacing old, worn or broken parts with the correct OEM parts are essential to prolonging the life of your EMB product. Please refer to this manual before ordering any replacement parts.

All information contained in this parts manual is based on the latest product specification available at the time of printing this manual. If your product differs from the specifications contained within this manual contact EMB Mfg. for information.

EMB reserves the right to alter specifications on their products at any time.

Reproduction of this parts manual of any kind is prohibited without prior written permission from EMB Mfg.

For parts and information please contact your dealer. If your dealer is no longer available please go to our website: <http://www.wallensteinequipment.com> and click on "FIND A DEALER NEAR YOU" for information on a local dealer.

Table of Contents Page

Bolt Torque.....	4
Hydraulic Fitting Torque	5
Main Assembly	6
Pivot Assembly Detail.....	7
Return Lock Assembly Detail.....	8
Grapple Assembly	9
Wide (Outside) Fork Assembly Detail.....	10
Cylinder Assembly	11
Hydraulic Hose List	11
Hydraulic Schematic.....	11
Labels.....	12
Accessories.....	13

Maintenance should be performed by
trained personnel only.



Refer to the operators
manual for safe
operation and
maintenance

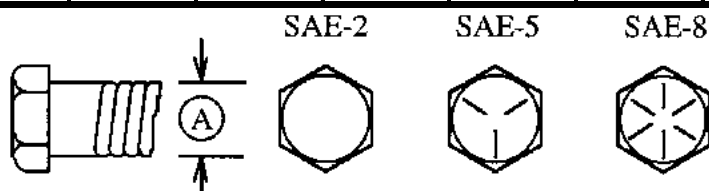
Bolt Torque

CHECKING BOLT TORQUE

The tables shown below give correct torque values for various bolts and capscrews. Tighten all bolts to the torques specified in chart unless otherwise noted. Check tightness of bolts periodically, using bolt torque chart as a guide. Replace hardware with the same strength bolt.

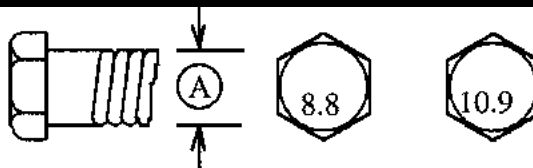
ENGLISH TORQUE SPECIFICATIONS

Bolt Diameter "A"	Bolt Torque*					
	SAE 2 (N.m) (lb-ft)		SAE 5 (N.m) (lb-ft)		SAE 8 (N.m) (lb-ft)	
1/4"	8	6	12	9	17	12
5/16"	13	10	25	19	36	27
3/8"	27	20	45	33	63	45
7/16"	41	30	72	53	100	75
1/2"	61	45	110	80	155	115
9/16"	95	60	155	115	220	165
5/8"	128	95	215	160	305	220
3/4"	225	165	390	290	540	400
7/8"	230	170	570	420	880	650
1"	345	225	850	630	1320	970



METRIC TORQUE SPECIFICATIONS

Bolt Diameter "A"	Bolt Torque*			
	8.8 (N.m) (lb-ft)		10.9 (N.m) (lb-ft)	
M3	0.5	0.4	1.8	1.3
M4	3	2.2	4.5	3.3
M5	6	4	9	7
M6	10	7	15	11
M8	25	18	35	26
M10	50	37	70	52
M12	90	66	125	92
M14	140	103	200	148
M16	225	166	310	229
M20	435	321	610	450
M24	750	553	1050	774
M30	1495	1103	2100	1550
M36	2600	1917	3675	2710



Torque figures indicated above are valid for non-greased or non-oiled threads and heads unless otherwise specified. Therefore, do not grease or oil bolts or capscrews unless otherwise specified in this manual. When using locking elements, increase torque values by 5%.

* Torque value for bolts and capscrews are identified by their head markings.

Hydraulic Fitting Torque

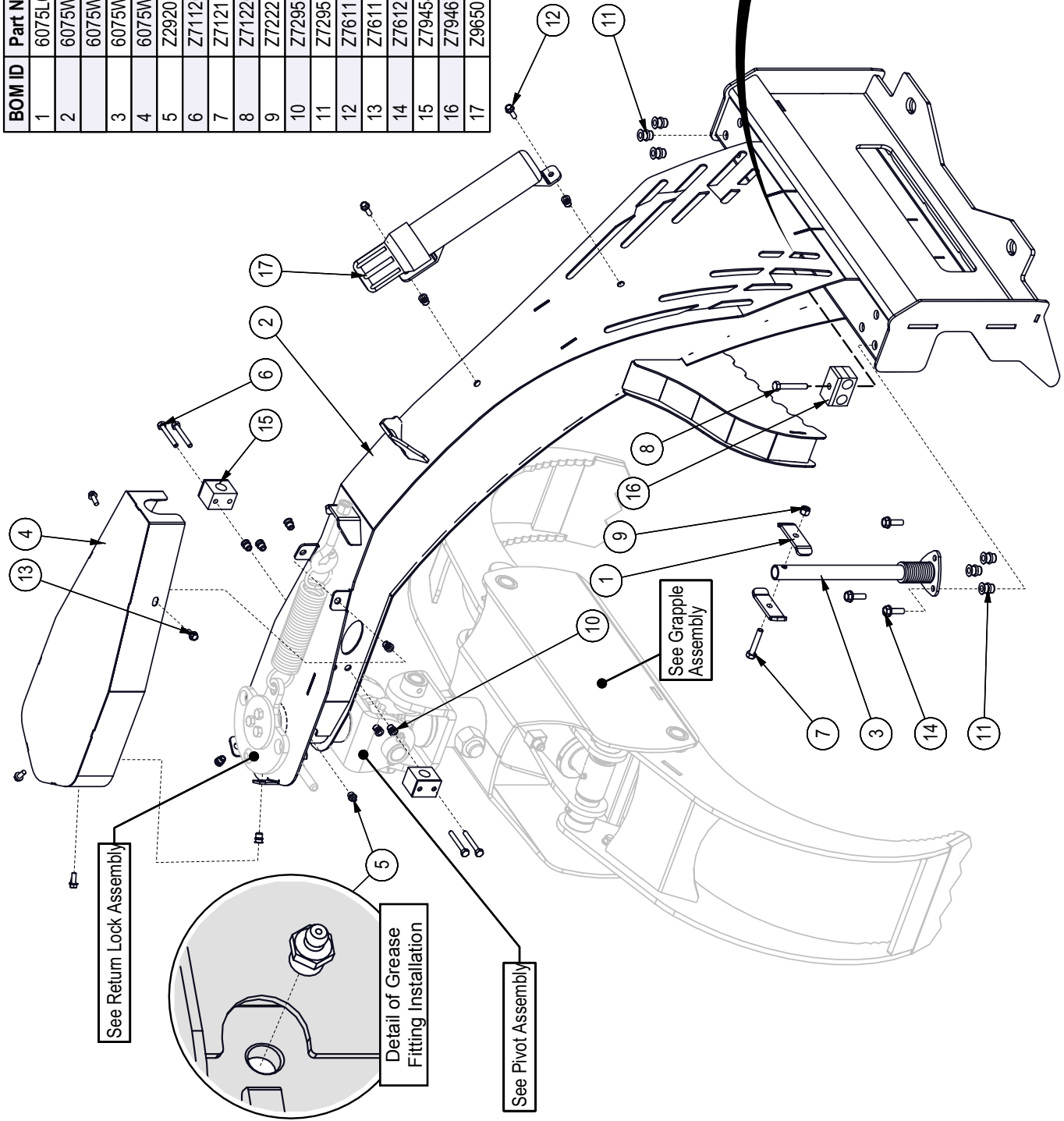
Tightening Flare Type Tube Fittings *

1. Check flare and flare seat for defects that might cause leakage.
 2. Align tube with fitting before tightening.
 3. Lubricate connection and hand tighten swivel nut until snug.
 4. To prevent twisting the tube(s), use two wrenches. Place one wrench on the connector body and with the second tighten the swivel nut to the torque shown.
- The torque values shown are based on lubricated connections as in reassembly.

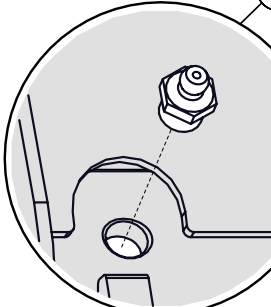
HYDRAULIC FITTING TORQUE					
Tube Size OD	Nut Size Across Flats	Torque Value*		Recommended Turns To Tighten (After Finger Tightening)	
		(in.)	(in.)	(N.m)	(lb-ft)
3/16	7/16	8	6	1	1/6
1/4	9/16	12	9	1	1/6
5/16	5/8	16	12	1	1/6
3/8	11/16	24	18	1	1/6
1/2	7/8	46	34	1	1/6
5/8	1	62	46	1	1/6
3/4	1-1/4	102	75	3/4	1/8
7/8	1-3/8	122	90	3/4	1/8

BOM ID	Part No.	Description	Qty
1	6075L021	Clamp, Double Hose	2
2	6075W001	Weldment, Main Boom - LXG210S	1
3	6075W501	Weldment, Main Boom - LXG210SB	1
4	6075W002	Hose Mount Whip	1
5	6075W003	Weldment, Spring Guard	1
6	Z29201	Grease Fitting, MP02	1
7	Z71120	Hex Bolt, 1/4NC x 2"	4
8	Z71217	Hex Bolt, 5/16NC x 1-3/4"	1
9	Z71220	Hex Bolt, 5/16NC x 2"	1
10	Z72221	Hex Lock Nut, 5/16NC	1
11	Z72955	Rivet Nut, 1/4NC x 165	10
12	Z72957	Rivet Nut, 5/16NC x 312	6
13	Z76111	Flange Bolt, 1/4NC x 3/4"	2
14	Z76117	Flange Bolt, 1/4NC x 5/8"	4
15	Z76125	Flange Bolt, 5/16NC x 1"	3
16	Z79454	Single Hose Clamp, 11/16" OD	2
17	Z79463	Double Hose Clamp, 11/16" OD	1
18	Z96505	Manual Tube, 2" Short	1

Main Assembly



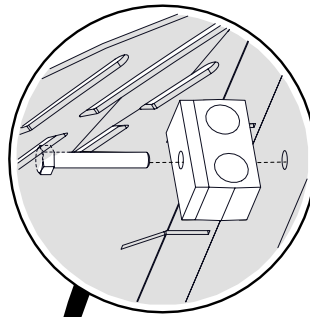
See Return Lock Assembly



Detail of Grease Fitting Installation

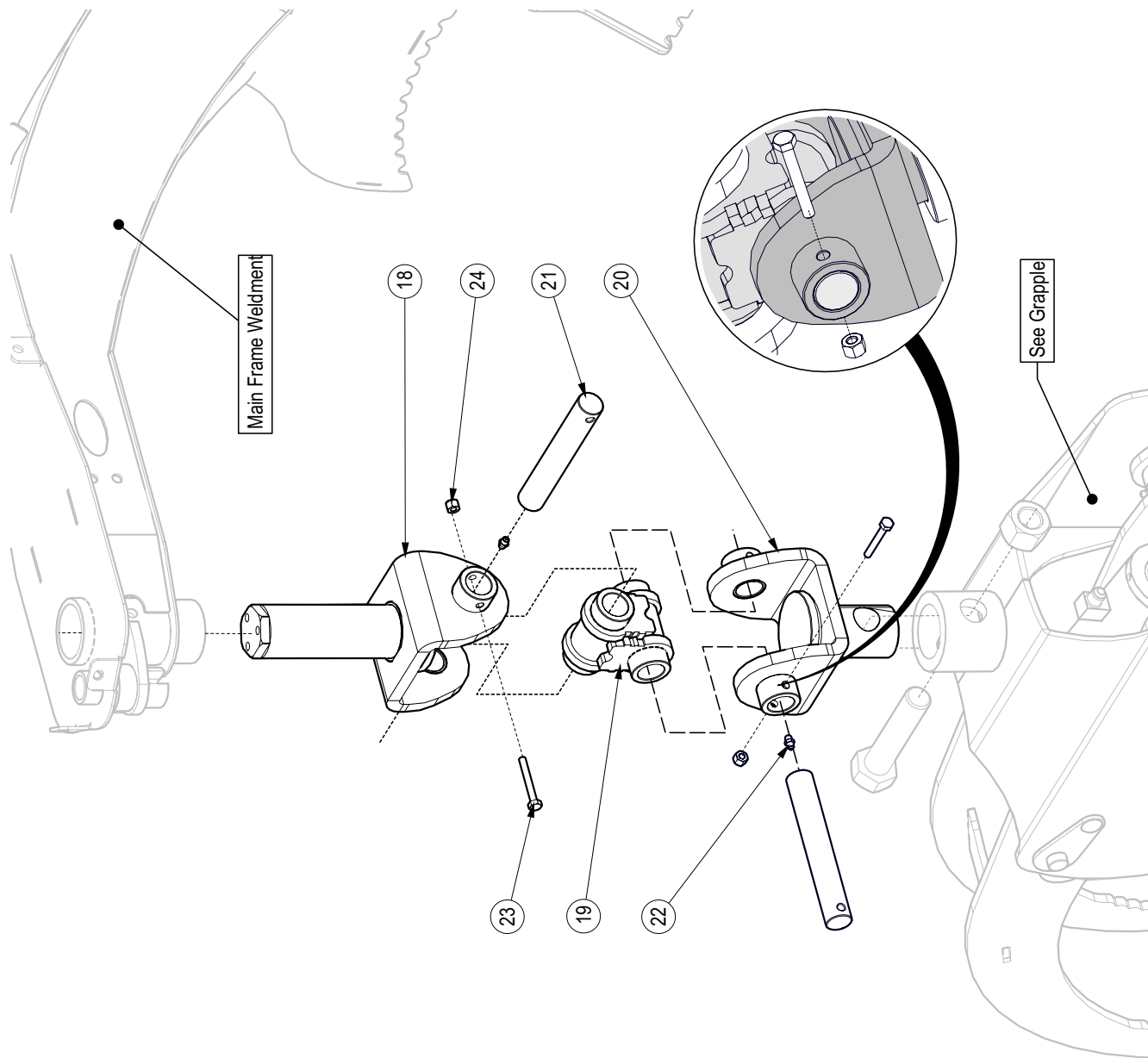
See Pivot Assembly

See Grapple Assembly



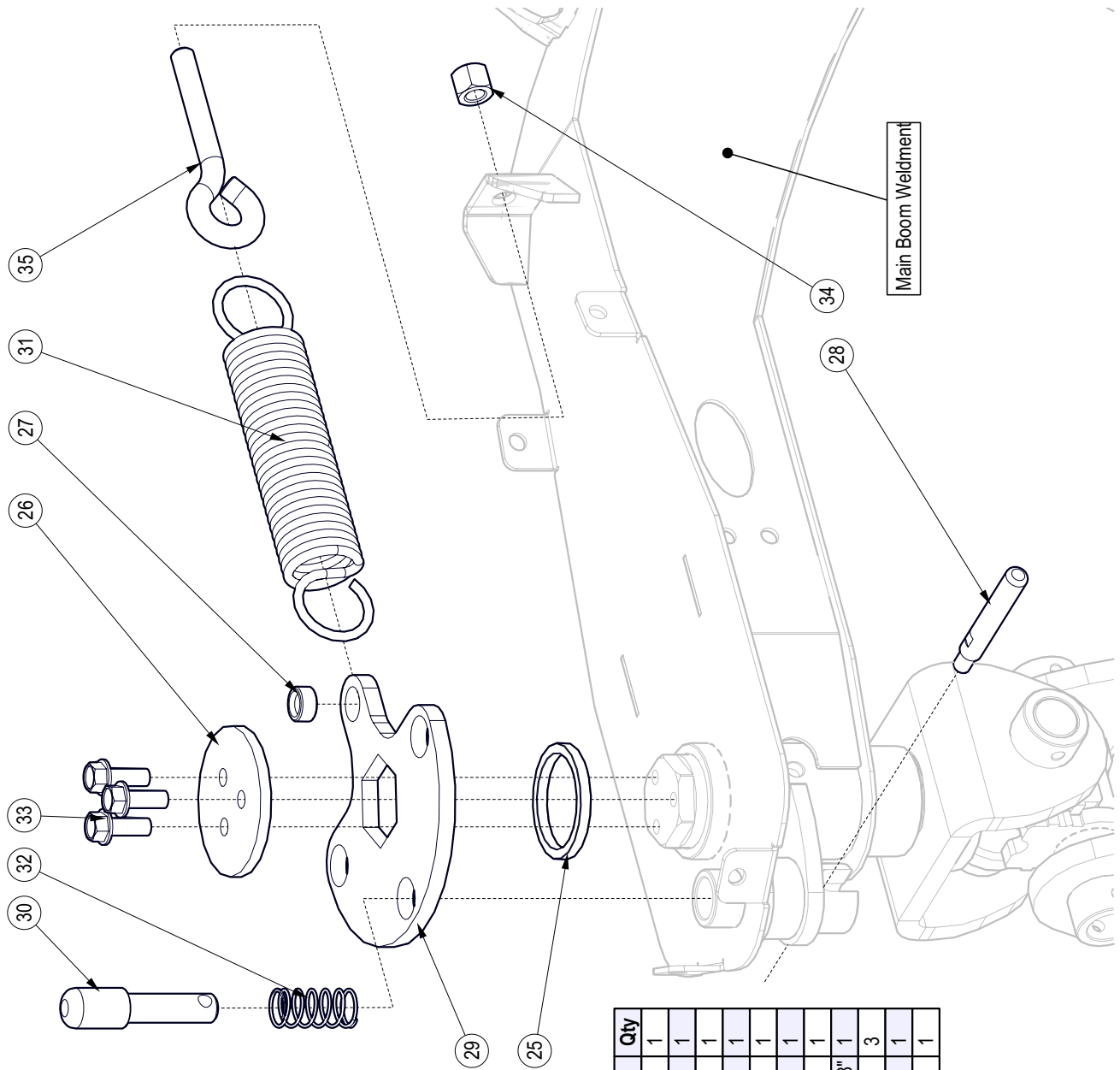
Detail of Items #8 & #16 Installation

Pivot Assembly Detail



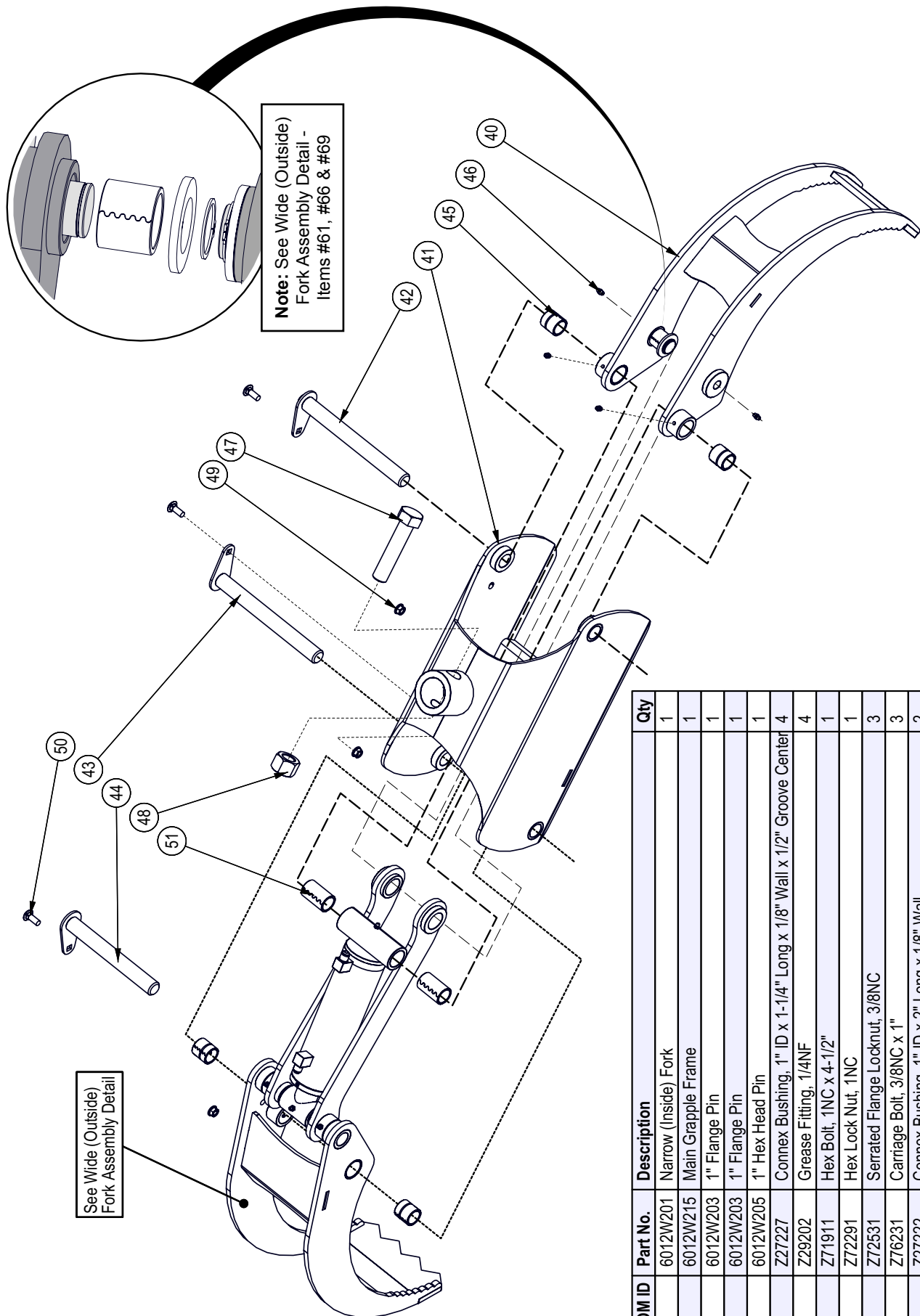
BOM ID	Part No.	Description	Qty
18	6075W004	Weldment, Main Pivot	1
19	6075W005	Weldment, Pivot Link	1
20	6075W006	Weldment, Grapple Pivot	1
21	6011M107	Greaseable Pin	2
22	Z29202	Grease Fitting, 1/4NF	2
23	Z71120	Hex Bolt, 1/4NC x 2"	2
24	Z72211	Hex Lock Nut, 1/4NC	2

Return Lock Assembly Detail



BOM ID	Part No.	Description	Qty
25	6011M104	Flat Bearing	1
26	6016L003	Plate, Main Pivot Keeper	1
27	6016M007	Bushing, Spring	1
28	6016M511	Lever, Grapple Lock	1
29	6071L109	Flange	1
30	6071M102	Pin, Grapple Lock	1
31	Z31502	Ext Spring, 1-3/4" OD x 9" x .207"	1
32	Z32306	Comp Spring, 0.845" OD x 1-3/4" x 0.068"	1
33	Z71310	Flange Bolt, 3/8NC x 1"	3
34	Z72251	Hex Lock Nut, 1/2NC	1
35	Z76551	Eye Bolt, 1/2NC x 3"	1

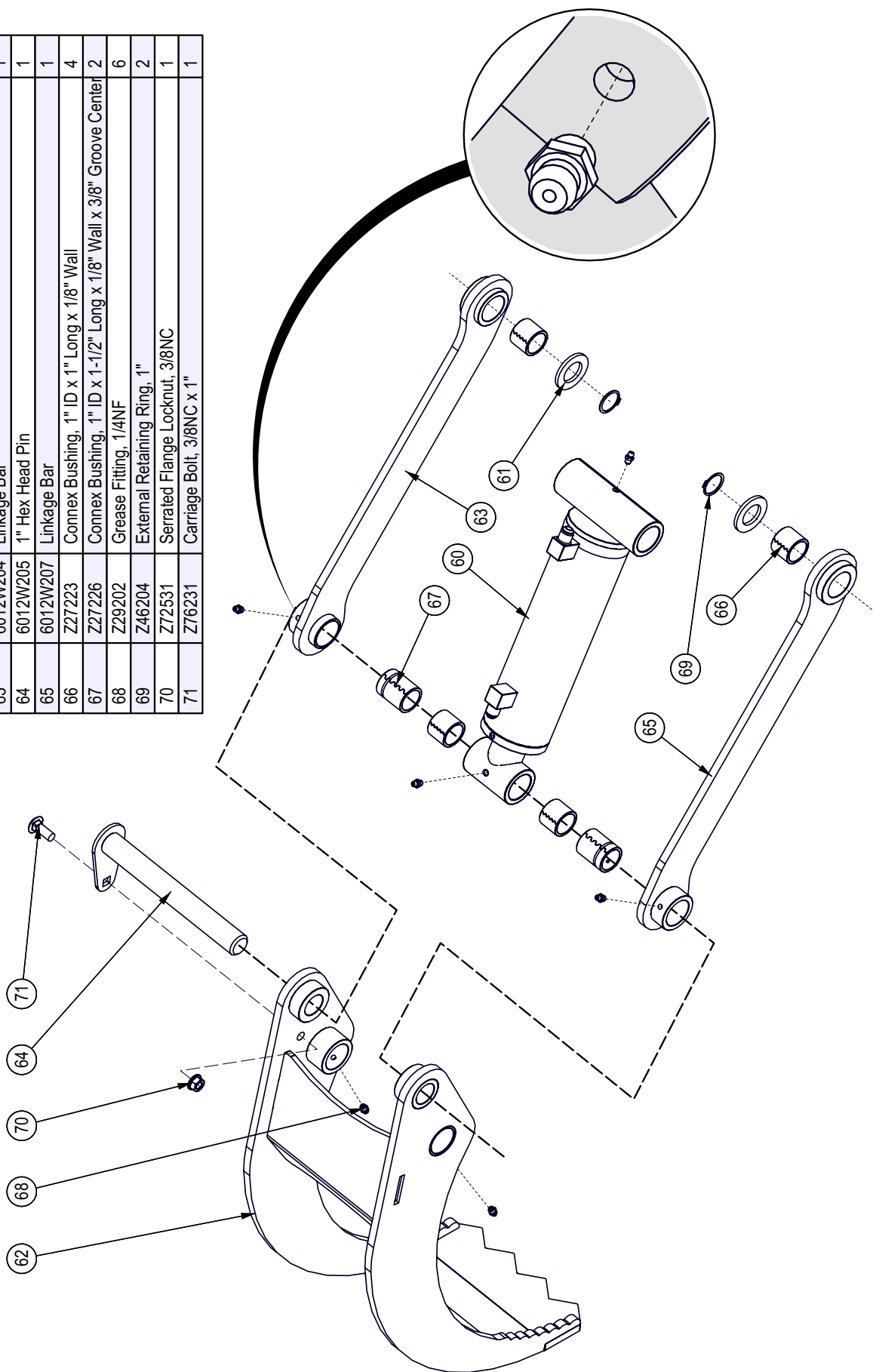
Grapple Assembly



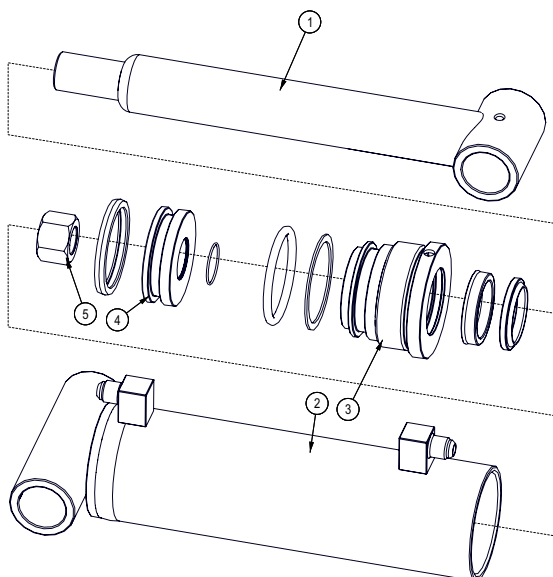
BOM ID	Part No.	Description	Qty
40	6012W201	Narrow (Inside) Fork	1
41	6012W215	Main Grapple Frame	1
42	6012W203	1" Flange Pin	1
43	6012W203	1" Flange Pin	1
44	6012W205	1" Hex Head Pin	1
45	Z27227	Connex Bushing, 1" ID x 1-1/4" Long x 1/8" Wall x 1/2" Groove Center	4
46	Z29202	Grease Fitting, 1/4NF	4
47	Z71911	Hex Bolt, 1NC x 4-1/2"	1
48	Z72291	Hex Lock Nut, 1NC	1
49	Z72531	Serrated Flange Locknut, 3/8NC	3
50	Z76231	Carriage Bolt, 3/8NC x 1"	3
51	Z27222	Connex Bushing, 1" ID x 2" Long x 1/8" Wall	2

Wide (Outside) Fork Assembly Detail

BOM ID	Part No.	Description	Qty
60	6012C205	Cylinder, 2-1/2 x 6	1
61	6012L118	Washer, Linkage	2
62	6012W202	Wide (Outside) Fork	1
63	6012W204	Linkage Bar	1
64	6012W205	1" Hex Head Pin	1
65	6012W207	Linkage Bar	1
66	ZZ7223	Connex Bushing, 1" ID x 1" Long x 1/8" Wall	4
67	ZZ7226	Connex Bushing, 1" ID x 1-1/2" Long x 1/8" Wall x 3/8" Groove Center	2
68	ZZ9202	Grease Fitting, 1/4NF	6
69	Z46204	External Retaining Ring, 1"	2
70	Z72531	Serrated Flange Locknut, 3/8NC	1
71	Z76231	Carriage Bolt, 3/8NC x 1"	1



Cylinder Assembly



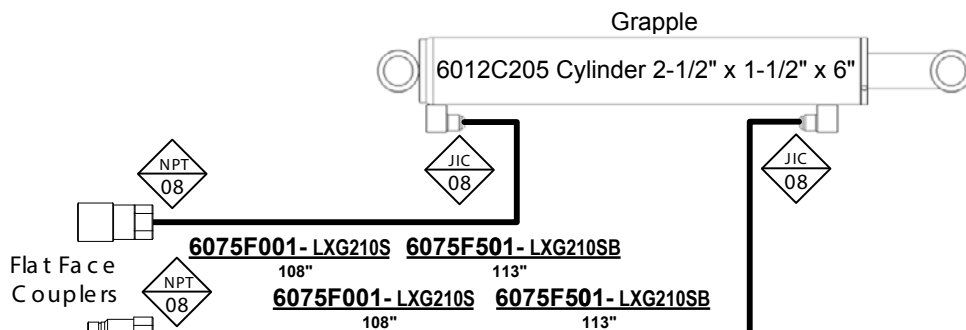
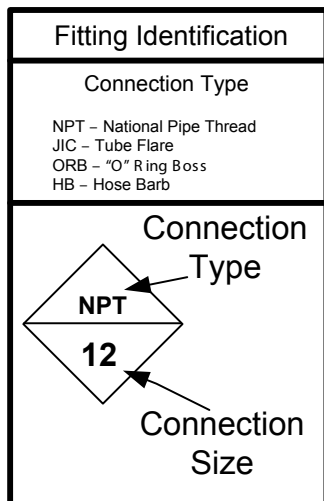
Seal Kit #SLK-2515

BOM ID	Part No.	Description	Qty
1	6012C2053	Rod, 1-1/2 x1	1
2	6012C2054	Barrel, 2-1/2"	1
3	G250-150S	Gland, 2-1/2" x 1-1/2"	1
4	P100-250SP	Piston, 2-1/2" Bore	1
5	Z72276G8	Hex Top-lock Nut, 3/4NF G8	1

Hydraulic Hose List

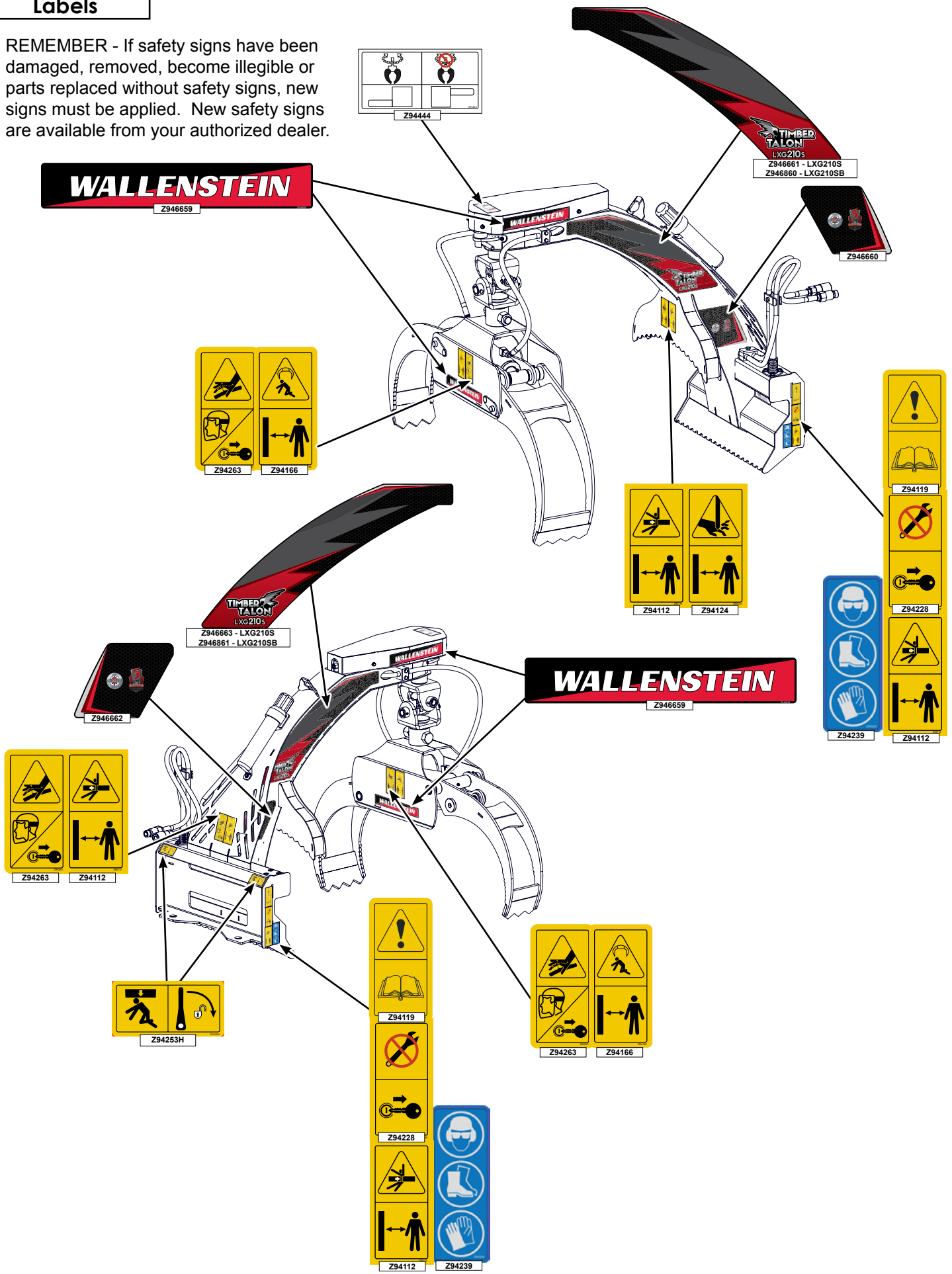
Part No.	Description	Qty
6075F001	3/8" Hose, 45FJIC06 x MP08 x 108 - LXG210S	2
6075F501	3/8" Hose, 45FJIC06 x MP08 x 113 - LXG210SB	2

Hydraulic Schematic



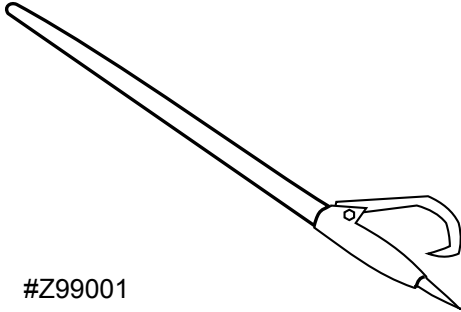
Labels

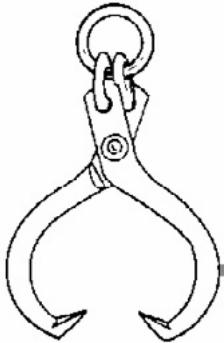
REMEMBER - If safety signs have been damaged, removed, become illegible or parts replaced without safety signs, new signs must be applied. New safety signs are available from your authorized dealer.



Accessories

Call your dealer for pricing and availability

 <p>#Z99001</p>	<p>#Z99001 48" LOG PEAVEY</p> <p>Quality 2 3/8" diameter hardwood handle, with a Western Duck Bill Hook. Helps to move those heavy log timbers into position.</p>
--	--

 <p>#Z99003</p>	<p>#Z99003 SKIDDING TONGS</p> <p>Heavy Duty Forged Ring Skidding Tongs Maximum Opening: 25" Minimum Opening: 4-1/2" Tough log skidding tongs are a quick and easy way to skid logs.</p>
---	--

	<p>#Z97109 GRAPPLE OPERATOR'S MANUAL</p> <p>Available as a download at www.wallensteinequipment.com</p>
---	--