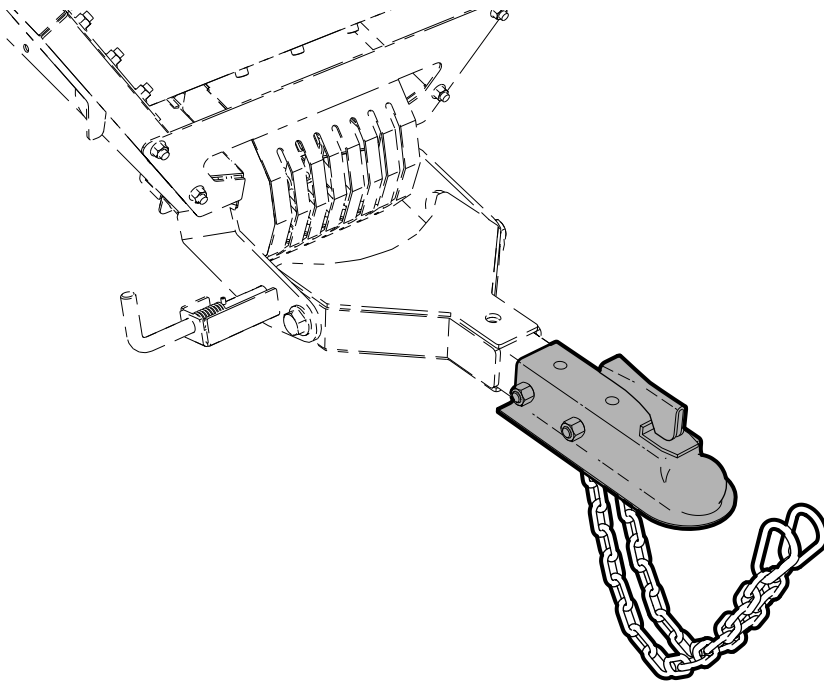


# INSTALLATION INSTRUCTIONS

---

## T200 BALL HITCH



---

Part No. 2280T267

## Safety

### 1. Safety Alert Symbol

This Safety Alert Symbol means:

**ATTENTION! BE ALERT!**

**YOUR SAFETY IS INVOLVED!**

The **Safety Alert Symbol** identifies important safety messages on the machine. This symbol means be alert to the possibility of personal injury or death. Follow instructions provided.



### 2. Equipment Operation



**WARNING!**

**Avoid the risk of personal injury or machine damage! Read the operator's manual before using this equipment. Carefully read all safety messages in the manual and follow all safety signs on the machine.**

## T200 Ball Hitch

Fits on CT16, CT16B, CT24 and CT24B firewood conveyors.

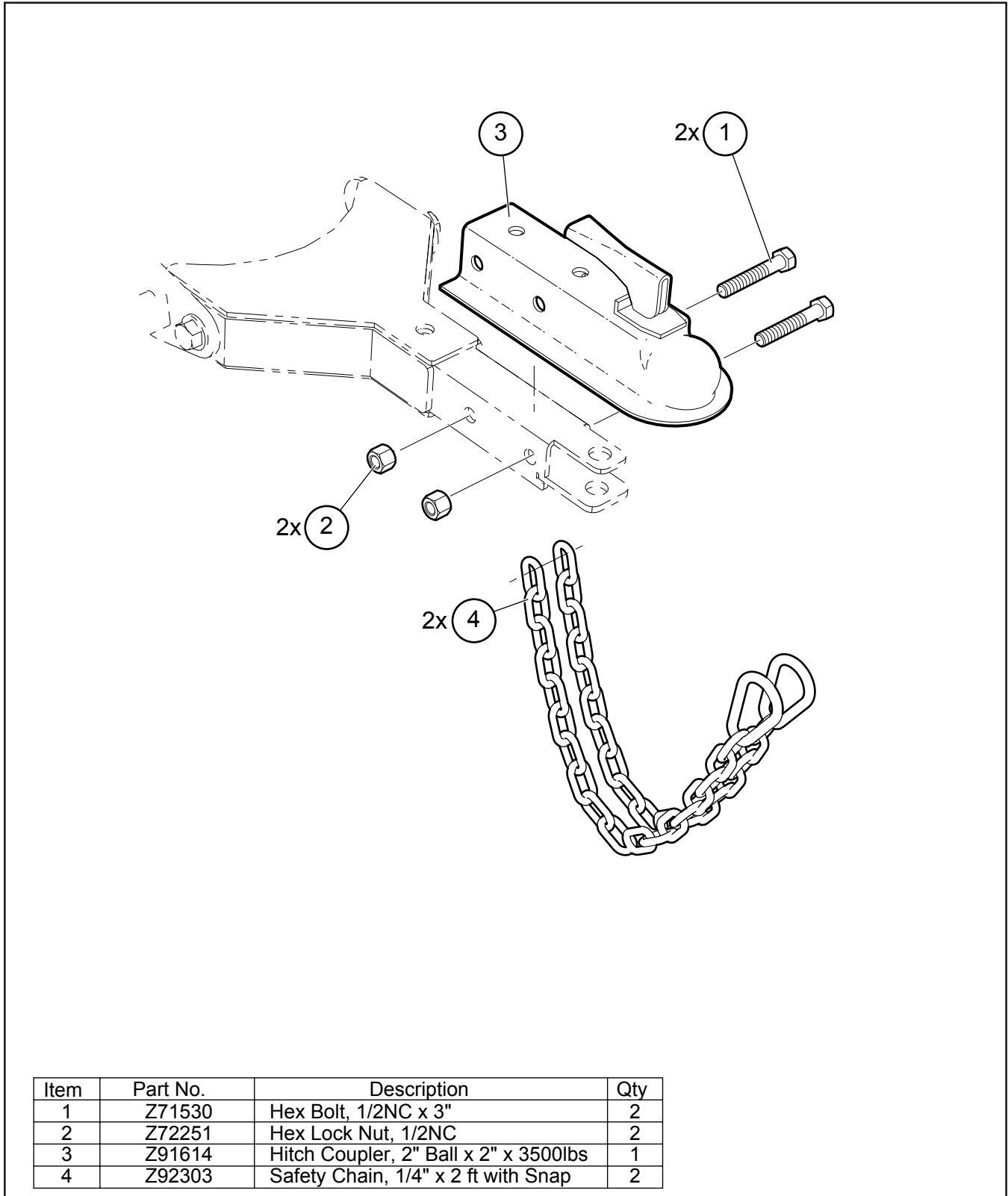


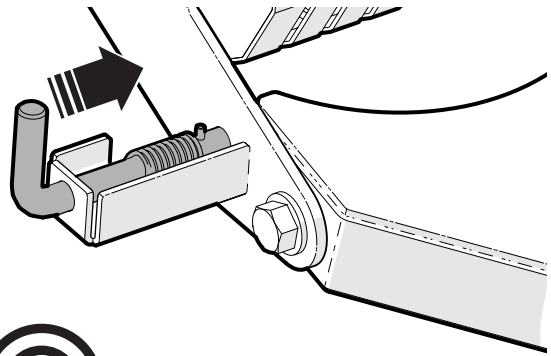
Fig. 1 – Parts Breakdown

## Tools Required

- 3/4" spanner and socket wrenches
- Torque wrench

## Procedure

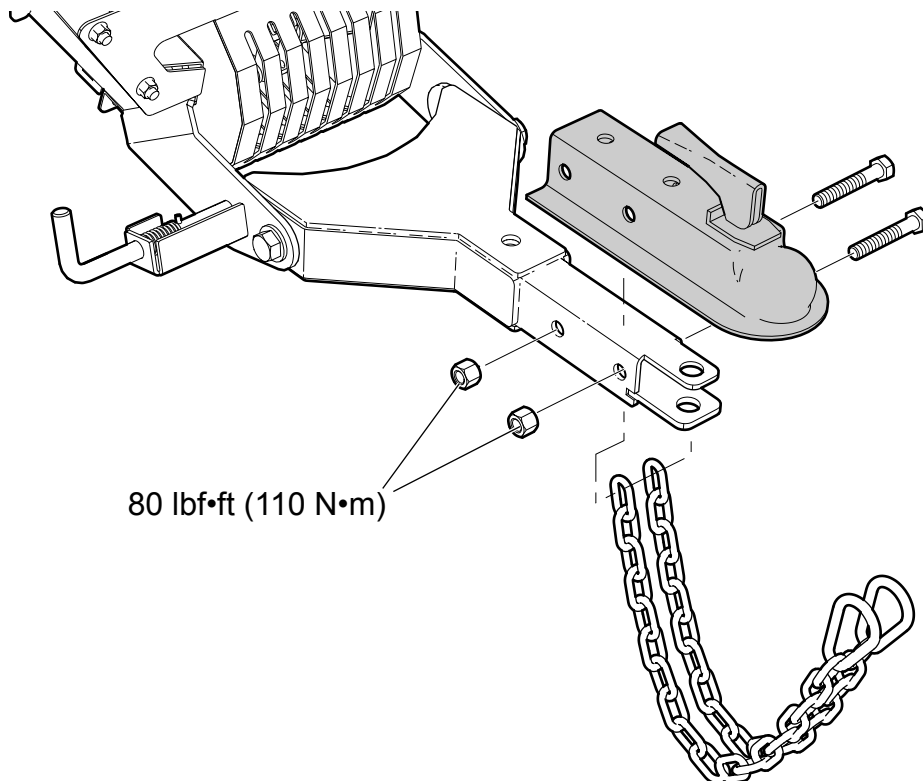
1. Empty the conveyor and turn the drive system off.
2. Lower the conveyor fully until it is resting on the stops.
3. Make sure the hitch is locked, with the pin fully inserted.



00459

Fig. 2 – Hitch Lock Pin

4. Place the hitch coupler over the conveyor tongue, then insert the bolts.
5. Place the front bolt through the ends of the safety chains. Torque to **80 lbf•ft (110 N•m)**.




### Checking Bolt Torque

The table shown gives correct torque values for various bolts and capscrews. Tighten all bolts to the torque values specified in the table, unless indicated otherwise. Check tightness of bolts periodically.

**IMPORTANT!** If replacing hardware, use fasteners of the same grade.

**IMPORTANT!** Torque figures indicated in the table are for non-greased or non-oiled threads. Do not grease or oil threads unless indicated otherwise. When using a thread locker, increase torque values by 5%.

Imperial Bolt Torque Specifications						
Bolt Diameter	Torque Value					
	SAE Gr. 2		SAE Gr. 5		SAE Gr. 8	
	lbf•ft	N•m	lbf•ft	N•m	lbf•ft	N•m
1/4"	6	8	9	12	12	17
5/16"	10	13	19	25	27	36
3/8"	20	27	33	45	45	63
7/16"	30	41	53	72	75	100
1/2"	45	61	80	110	115	155
9/16"	60	95	115	155	165	220
5/8"	95	128	160	215	220	305
3/4"	165	225	290	390	400	540
7/8"	170	230	420	570	650	880
1"	225	345	630	850	970	1320

 **NOTE:** Bolt grades are identified by their head markings.



SAE Gr. 2



SAE Gr. 5



SAE Gr. 8

**WALLENSTEIN**