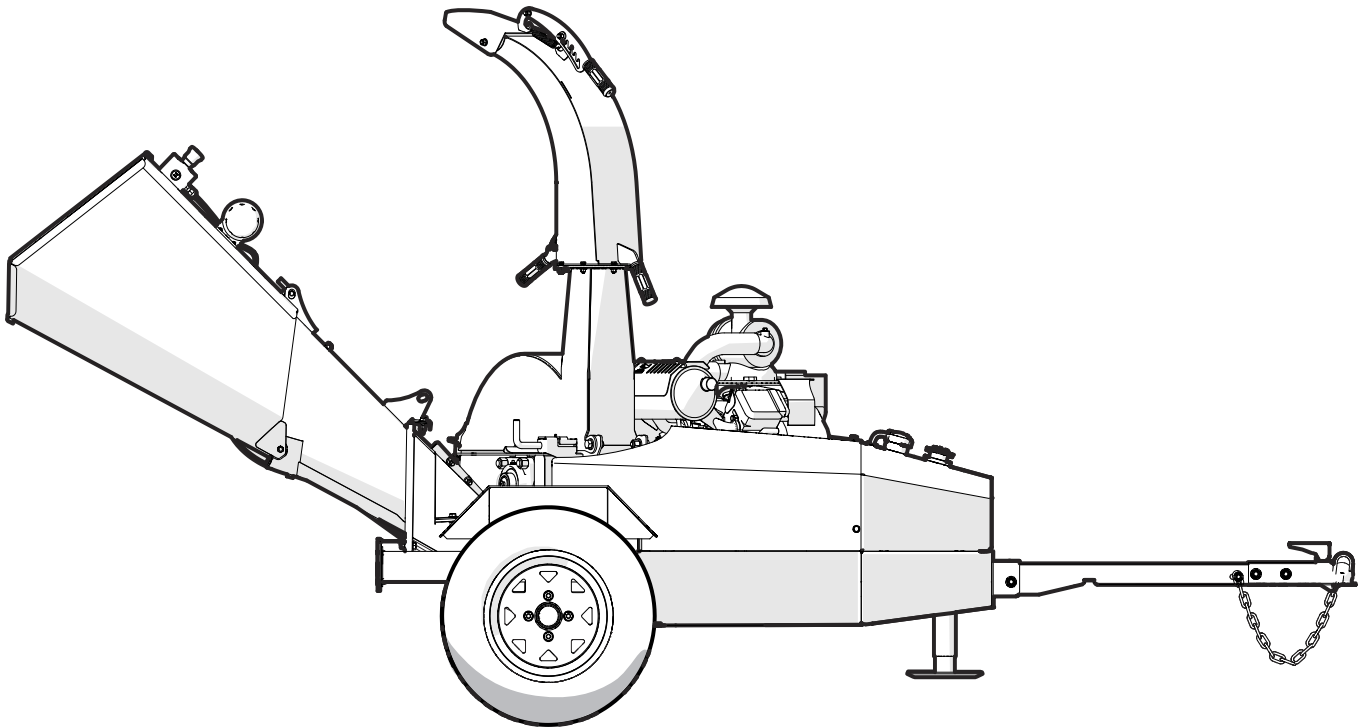


PARTS MANUAL

Serial Number 1101427 & up

BXT52S Trailer Wood Chipper



Foreword

This Wallenstein parts manual is prepared to assist customers in ordering quality OEM replacement parts.

Regular maintenance combined with replacing old, worn or broken parts with the correct OEM parts is essential in prolonging the life of your Wallenstein product. Refer to this manual to identify replacement parts.

To order parts, contact your Wallenstein dealer or distributor. Have the product model and serial number handy.

If your dealer is no longer available, please go to WallensteinEquipment.com. At the bottom of the page, select Dealer Locator.

All information contained in this parts manual is current as per the revision date at the bottom of the page. Wallenstein reserves the right to change product specifications at any time without notice.

If your product specifications differ from those contained in this manual, contact Wallenstein for current information.

Reproduction of information in this parts manual is prohibited without prior written permission from Wallenstein Equipment Inc.

Wallenstein Equipment Inc. • © 2023

WARNING!

For safety, operation, and maintenance information, see the Operator's Manual.

Maintenance should be performed by trained personnel only.

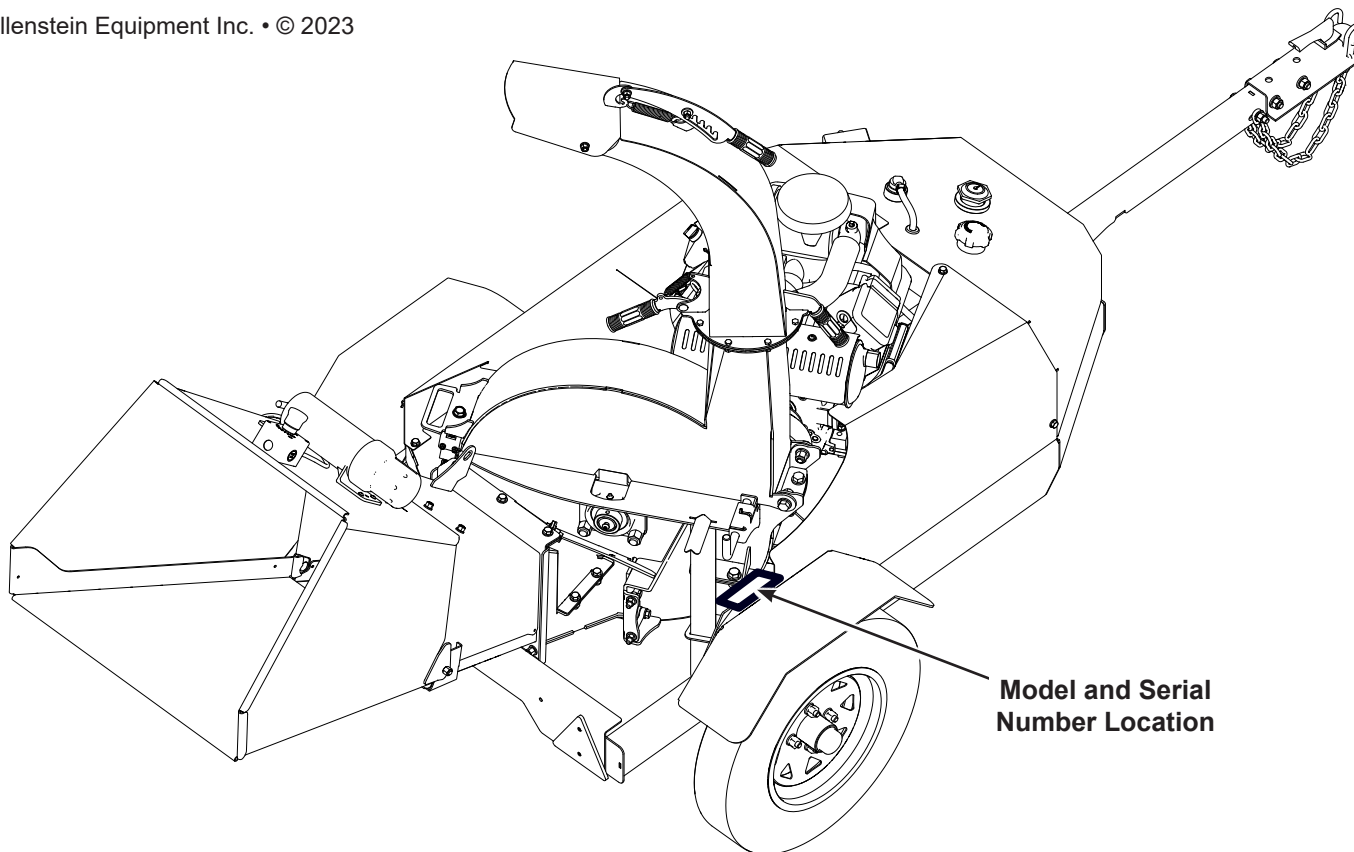
Serial Number Location

Always provide the model and serial number of your Wallenstein product when ordering parts or requesting service or other information. The serial number is on the product information plate as shown below.

Record your product information here for future reference.

Model _____

Serial Number _____

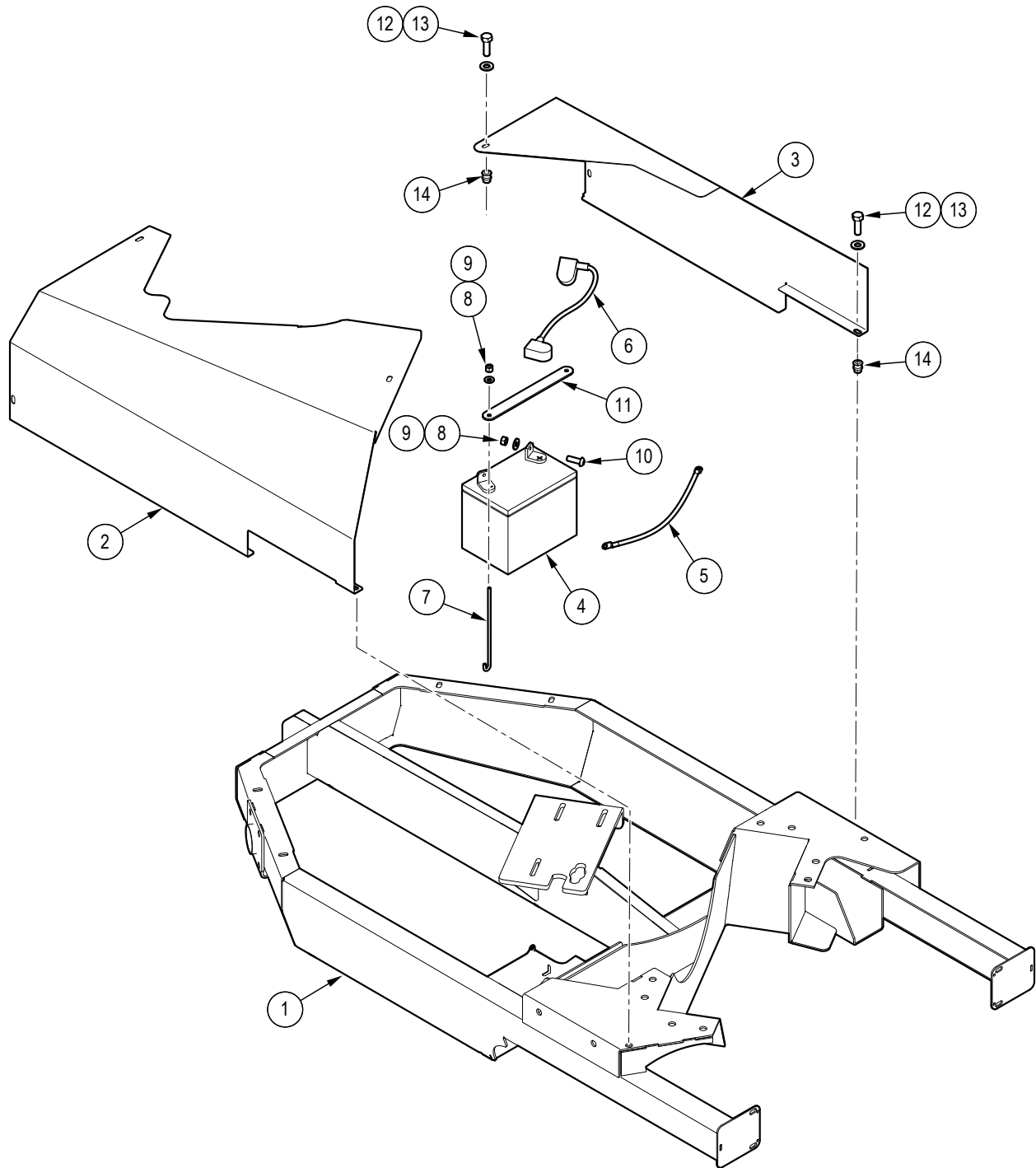


Model and Serial Number Location

Contents

Main Frame and Guards	4
Blower Assembly	5
Discharge Chute Assembly.....	6
Fuel Tank	7
Engine and Driveline	8
Rotor	9
Self-Feed Hopper	10
Hitch and Jack Assembly.....	11
Wheel and Idler Hub	12
Harness.....	13
Decal Layout.....	14
Decal Layout.....	15
Bolt Torque Specifications.....	17
Lug Nut Torque Specifications	18

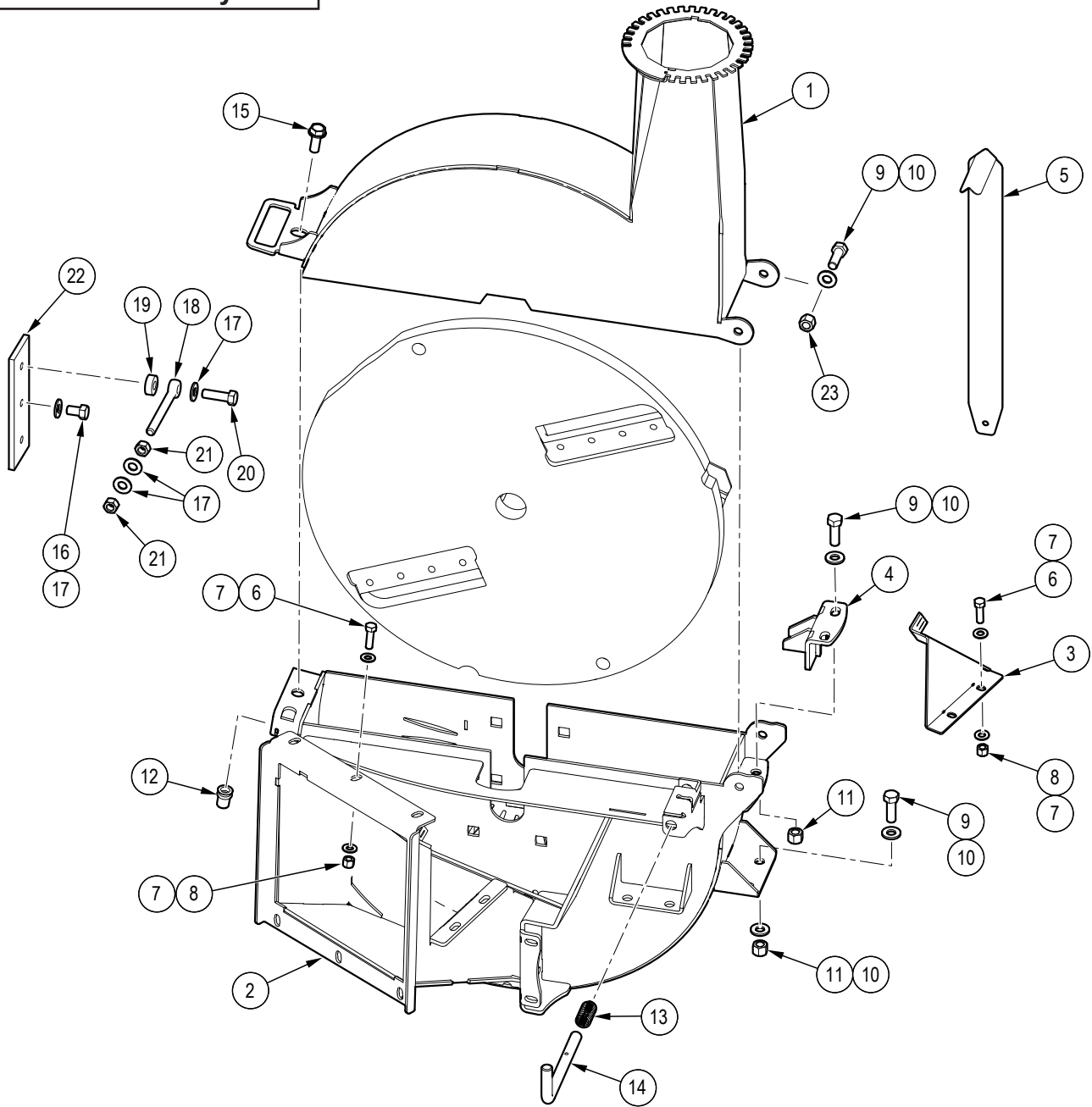
Main Frame and Guards



Item	Part No.	Description	Qty
1	1065W056	Weldment, Frame Assembly	1
2	1065L047	Cover, LH	1
3	1065L041	Cover, RH	1
4	Z93204	Battery, 325CCA	1
5	1065F008	Harness, Negative Battery Cable	1
6	1065F007	Harness, Positive Battery Cable	1
7	Z93202	J-Hook, 1/4" x 7"	2
8	Z72211	Hex Lock Nut, 1/4NC	3

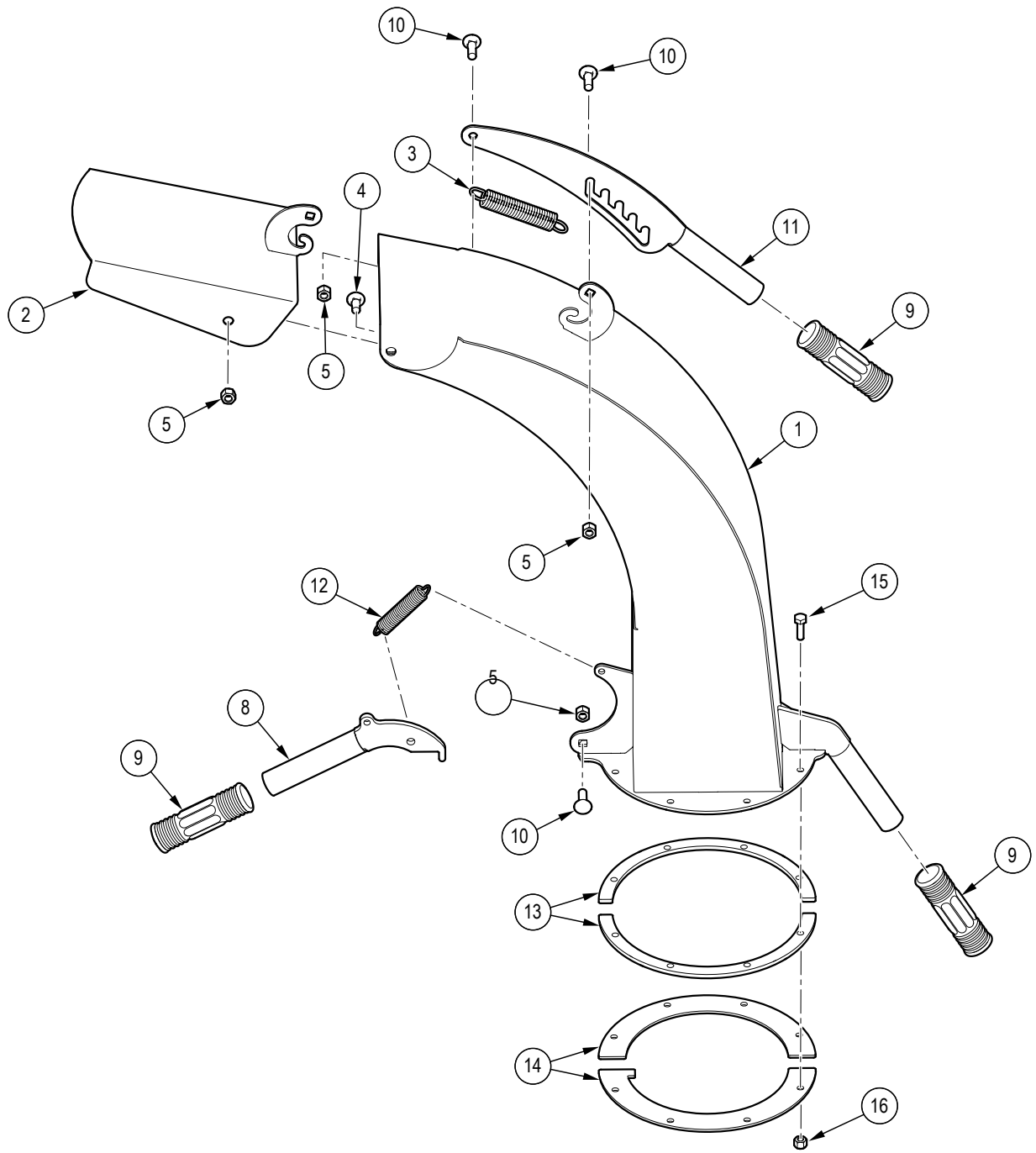
Item	Part No.	Description	Qty
9	Z73111G8	SAE Washer, 1/4" Grade 8	3
10	Z78301	BHCS, 1/4NC x 3/4", Hex Drive	2
11	Z93207	Hold-Down Strap, 1" x 8-1/2"	1
12	Z71210	Hex Bolt, 5/16NC x 1"	10
13	Z73122G8	SAE Washer, 5/16" Grade 8	10
14	Z72956	Rivet Nut, 5/16NC x 150	10

Blower Assembly



Item	Part No.	Description	Qty
1	1065W052	Upper Rotor Housing	1
2	1065W051	Lower Rotor Housing	1
3	1065L116	Service Hole Cover	1
4	1065W054	Twig Breaker, BXT52S	1
5	1012L269	Gauge, Ledger Setting	1
6	Z71515	Hex Bolt, 1/2NC x 1-1/2"	9
7	Z73151G8	SAE Washer, 1/2" Grade 8	16
8	Z72231	Hex Lock Nut, 3/8NC	9
9	Z71515	Hex Bolt, 1/2NC x 1-1/2"	6
10	Z73151G8	SAE Washer, 1/2" Grade 8	10
11	Z72251G8	Hex Lock Nut, 1/2NC G8	4
12	Z72960	Rivet Nut, 1/2NC x 200	1
13	Z32305	Comp Spring	1
14	1026M102	L Handled Plunger, Compact	1
15	Z76152	Flange Bolt, 1/2NC x 1-1/4"	1
16	Z71372G8	Hex Bolt, 3/8NF x 5/8" G8	3
17	Z73131	SAE Washer, 3/8"	7
18	Z76534	Rod End, 3/8NC x 3-1/2"	2
19	1024L124	Ledger Washer	2
20	Z71379G8	Hex Bolt, 3/8NF x 1-1/4" G8	2
21	Z72131	Hex Nut, 3/8NC	2
22	1011M104	Ledger Knife, 6" x 1/4"	1
23	Z72257G8	Hex Lock Nut, 1/2NC G8	2

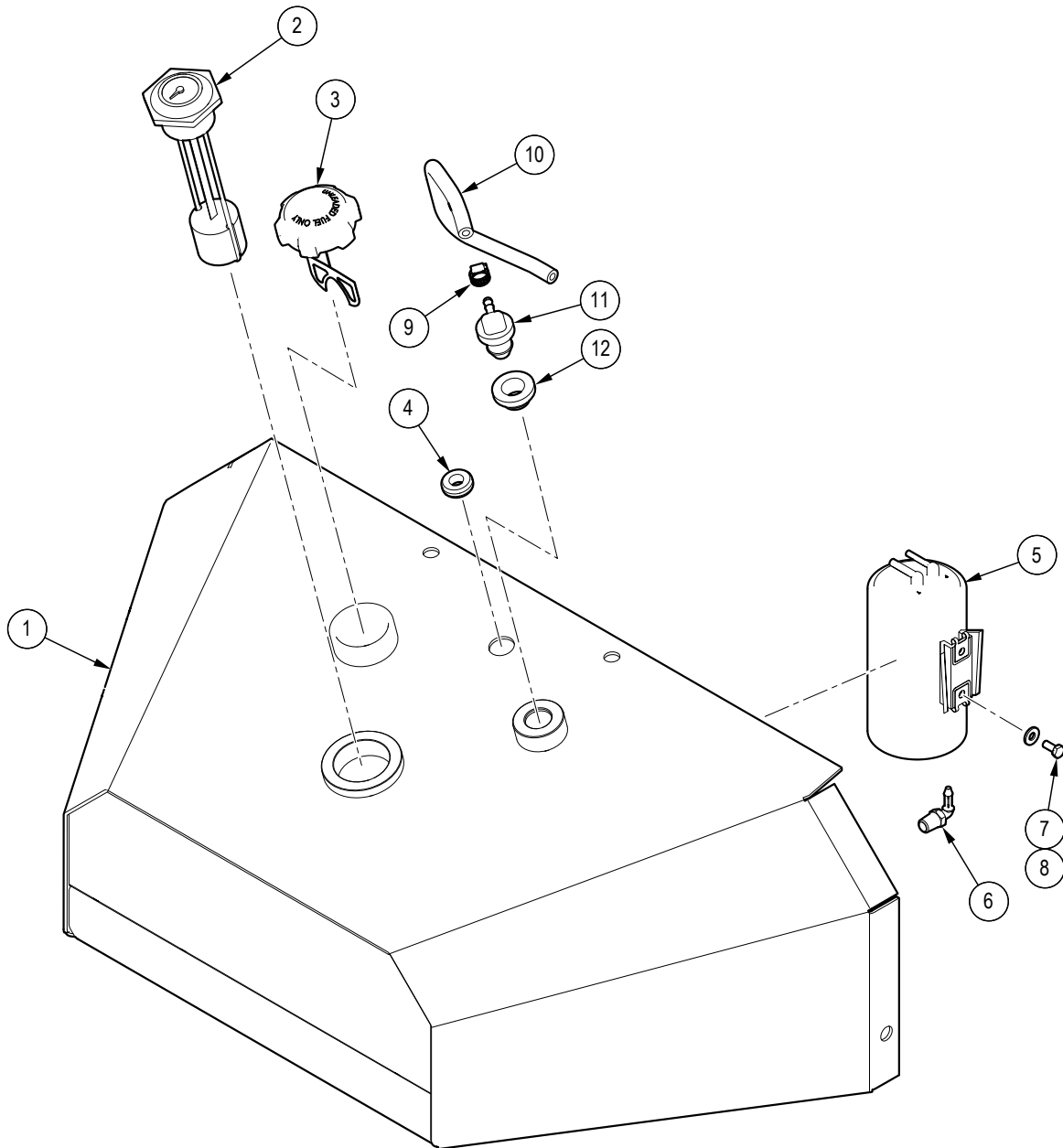
Discharge Chute Assembly



Item	Part No.	Description	Qty
1	1024W106	Weldment, Discharge Chute	1
2	1024W107	Weldment, Discharge Deflector	1
3	Z31401	Ext Spring, 3/4" OD x 4" x 0.105"	1
4	Z76221	Carriage Bolt, 5/16NC x 3/4"	2
5	Z72227	Hex Lock Nut 5/16NC	5
8	1024W108	Weldment, Discharge Latch	1

Item	Part No.	Description	Qty
9	Z19321	Handle Grip, 1"	3
10	Z76225	Carriage Bolt, 5/16NC x 1"	3
11	1024W109	Weldment, Discharge Adjustor	1
12	Z31305	Ext Spring, 5/8" OD x 3" x 0.08"	1
13	1024L134	Spacer Ring	2
14	1065L127	Hood Capture Ring	2
15	Z71108	Hex Bolt, 1/4NC x 7/8"	8
16	Z72211	Hex Lock Nut, 1/4NC	8

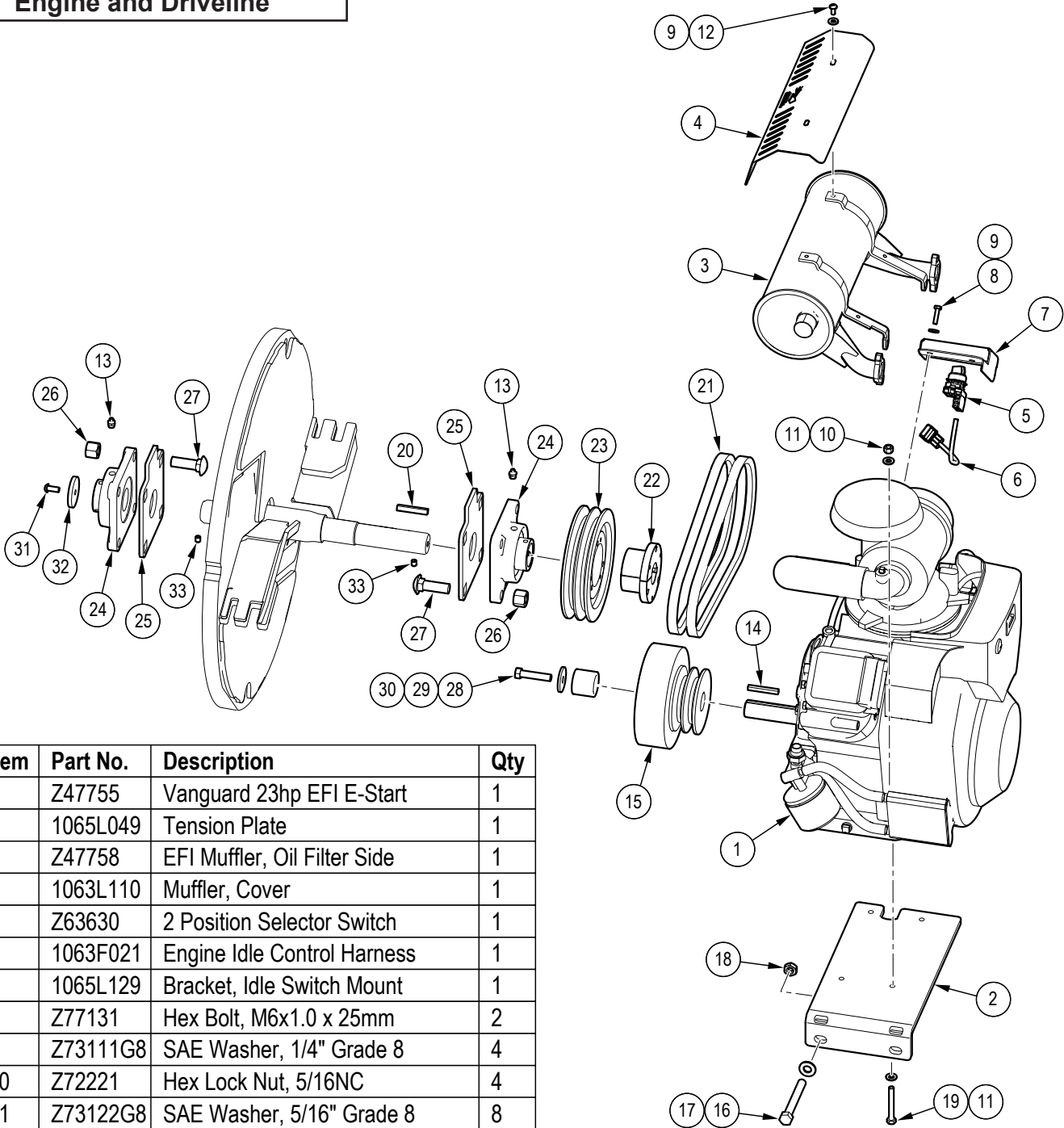
Fuel Tank



Item	Part No.	Description	Qty
1	1065W061	Fuel Tank, Trailer Chippers	1
2	Z93121	Fuel Gauge Thread Mount	1
3	Z93108	EPA Ratchet Fuel Cap	1
4	Z62830	Rubber Grommet, 1/2" x 1/8"	1
5	Z93309	EPA Carbon Canister, 652cc	1
6	Z93312	Plastic Elbow 90, MP x HB 0404	1

Item	Part No.	Description	Qty
7	Z77130	Hex Bolt, M6x1.0 x 14mm	2
8	Z73111G8	SAE Washer, 1/4" Grade 8	2
9	Z79405	Hose Clamp, SAE #4 (5/8")	2
10	1065F004	EPA Fuel Line, 1/4" x 28"	1
11	Z93110	EPA Remote Vent, HB04	1
12	Z93111	Vent Grommet For Z93110	1

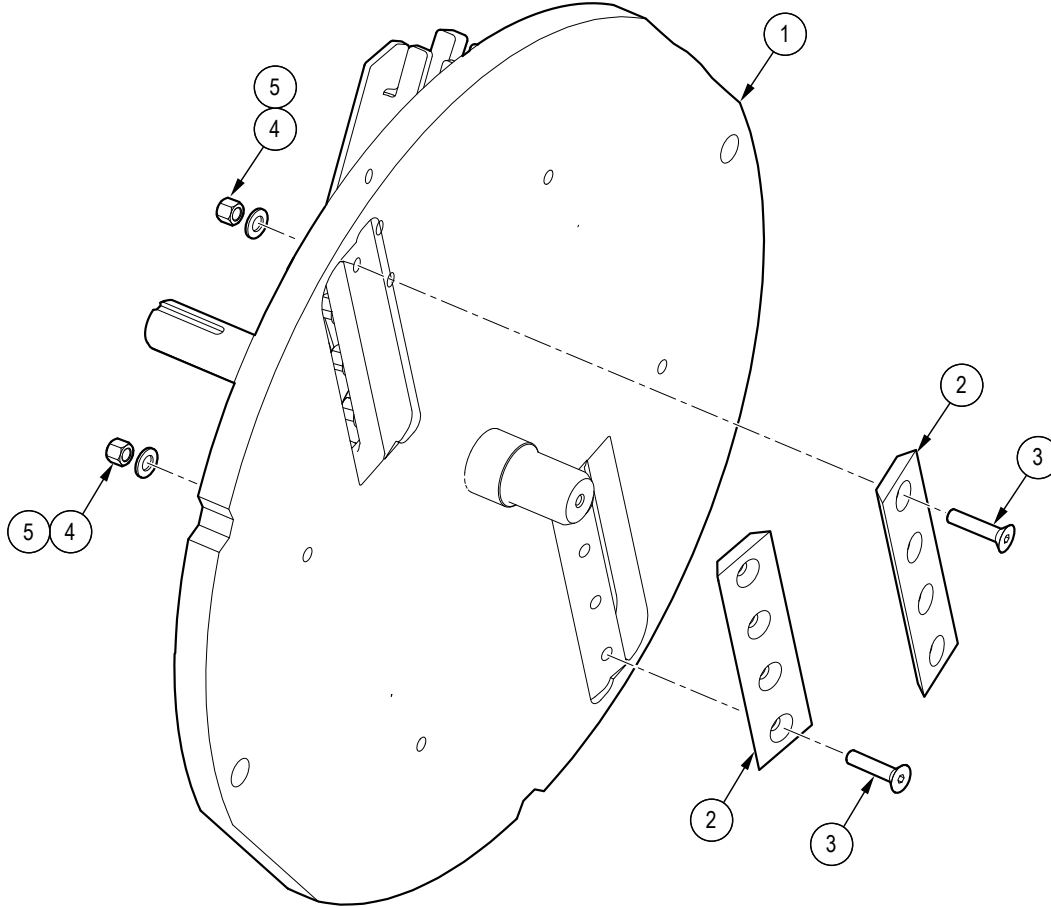
Engine and Driveline



Item	Part No.	Description	Qty
1	Z47755	Vanguard 23hp EFI E-Start	1
2	1065L049	Tension Plate	1
3	Z47758	EFI Muffler, Oil Filter Side	1
4	1063L110	Muffler, Cover	1
5	Z63630	2 Position Selector Switch	1
6	1063F021	Engine Idle Control Harness	1
7	1065L129	Bracket, Idle Switch Mount	1
8	Z77131	Hex Bolt, M6x1.0 x 25mm	2
9	Z73111G8	SAE Washer, 1/4" Grade 8	4
10	Z72221	Hex Lock Nut, 5/16NC	4
11	Z73122G8	SAE Washer, 5/16" Grade 8	8
12	Z77811	Machine Screw, M6x1.0 x 13mm	2
13	Z29201	Grease Fitting, MP02	2
14	Z46531	Key, 1/4" x 1/4" x 2"	1
15	Z41902	Centrifugal Clutch, 2B39 x 1-1/8"	1
16	Z71556	Hex Bolt, 1/2NC x 4", Full Threads	2
17	Z73151G8	SAE Washer, 1/2" Grade 8	2
18	Z72351	Jam Nut, 1/2NC	2
19	Z71225	Hex Bolt, 5/16NC x 2-1/2"	4
20	Z46541	Key, 5/16" x 5/16" x 2"	1
21	Z41175	Single Belt, BX36	2
22	Z41501	Hub, SK x 1-3/8"	1
23	Z41715	Double Sheave, 2B70 x SK	1

Item	Part No.	Description	Qty
24	Z25204	4-Bolt Flange Bearing	2
25	1024L107	Bearing Plate, BX52	2
26	Z72261G8	Hex Lock Nut, 5/8NC G8	8
27	Z76261G8	Carriage Bolt, 5/8NC x 2" G8	8
28	Z71471	Hex Bolt, 7/16NF x 2"	1
29	1056L665	Clutch Washer	1
30	1065M003	Spacer Ring	1
31	Z75351	BHCS, 5/16NF x 3/4"	1
32	1021S102	Rotation Indicator Cover	1
33	Z74122	Set Screw, 5/16NF x 3/8"	6

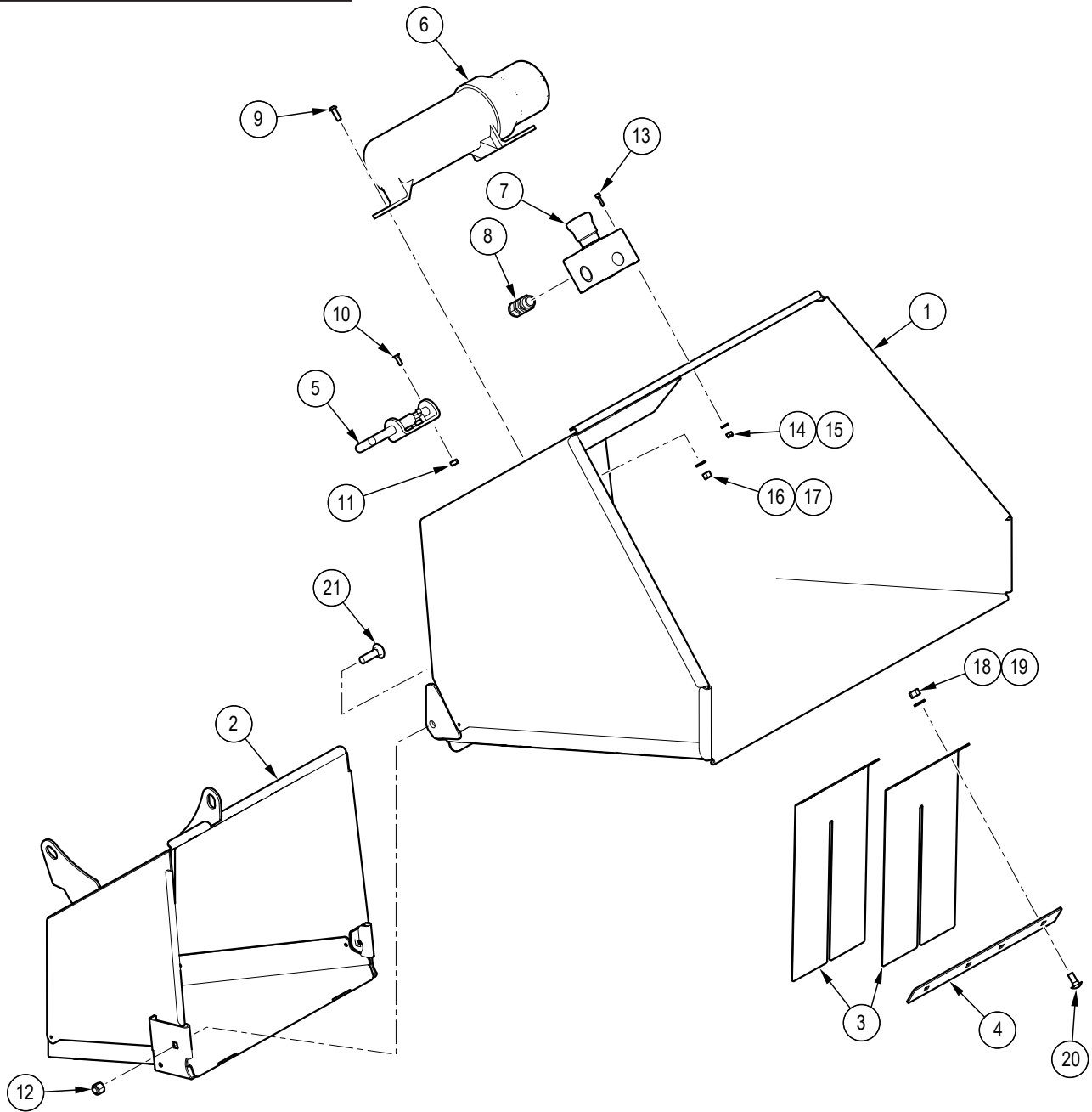
Rotor



Item	Part No.	Description	Qty
1	1065W077	Rotor, 5" Capacity Blower	1
2	1065M010	Rotor Knife, 7 1/2" x 3/8"	2

Item	Part No.	Description	Qty
3	Z75232G8	FHCS, 3/8NF x 1-3/4" G8	8
4	Z72232G8	Hex Lock Nut, 3/8NF G8	8
5	Z73131G8	SAE Washer, 3/8" Grade 8	8

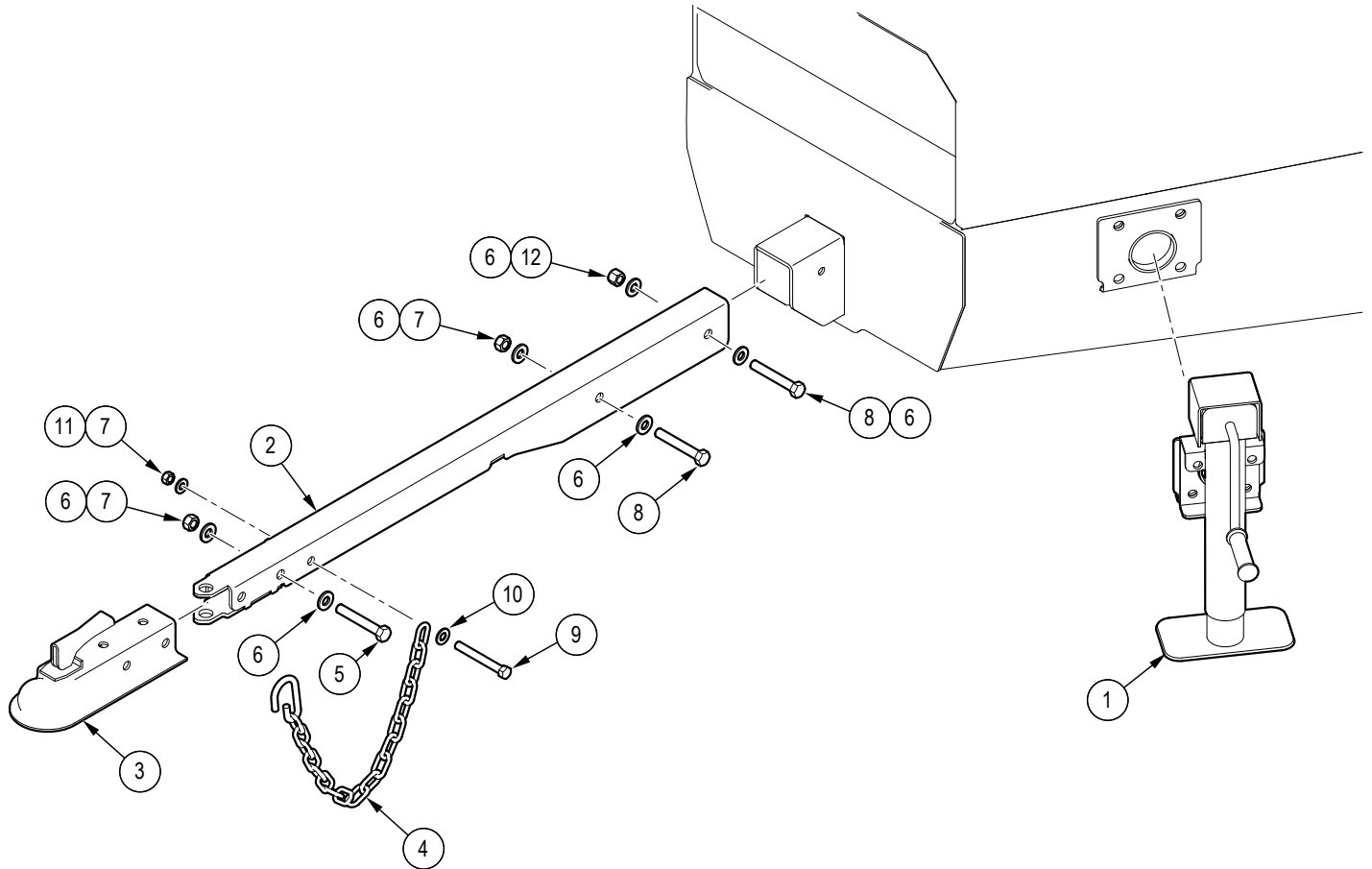
Self-Feed Hopper



Item	Part No.	Description	Qty
1	1065W055	Folding Hopper	1
2	1065W070	Mid Hopper	1
3	1024S108	Hopper Flap	2
4	1024L156	Flap Trap Plate	1
5	Z18207	Spring Latch Pin, 1/2" x 1" Stroke	1
6	Z96503	Manual Tube, 3-1/2" Short	1
7	Z66114	E-Stop Button, N/O Contact	1
8	Z62820	Straight Fitting, 3/8" Wire	1
9	Z78301	BHCS, 1/4NC x 3/4", Hex Drive	3
10	Z75204	FHCS, #10NF x 5/8"	4

Item	Part No.	Description	Qty
11	Z72204	Hex Lock Nut, #10NF	4
12	Z72237	Hex Lock Nut 3/8NC	2
13	Z75107	SHCS, #8NC x 5/8"	4
14	Z72202	Hex Lock Nut, #8NC	4
15	Z73102	SAE Washer, #8	4
16	Z72211	Hex Lock Nut, 1/4NC	3
17	Z73111G8	SAE Washer, 1/4" Grade 8	3
18	Z72221	Hex Lock Nut, 5/16NC	4
19	Z73122G8	SAE Washer, 5/16" Grade 8	4
20	Z76221	Carriage Bolt, 5/16NC x 3/4"	4
21	Z76232	Carriage Bolt, 3/8NC x 1-1/4"	2

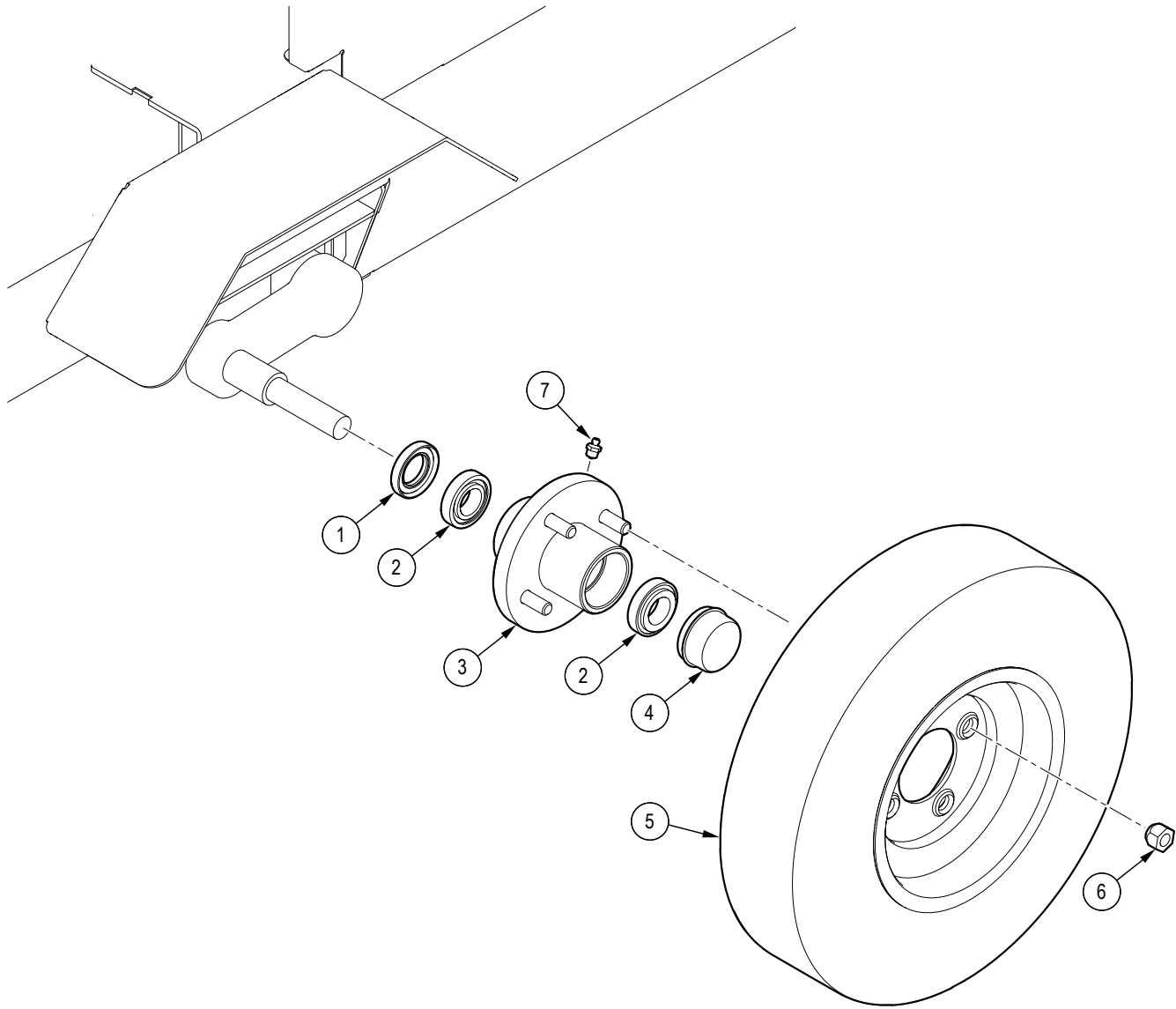
Hitch and Jack Assembly



Item	Part No.	Description	Qty
1	Z91516	Trailer Jack, Side Wind x 2000lbs	1
2	1066W505	Weldment, Tongue	1
3	Z91614	Hitch Coupler, 2" Ball x 3500lbs	1
4	Z92303	Safety Chain, 1/4" Gr43 x 2ft	2
5	Z71532	Hex Bolt, 1/2NC x 3-1/4"	2

Item	Part No.	Description	Qty
6	Z73151G8	SAE Washer, 1/2" Grade 8	4
7	Z72151	Hex Nut, 1/2NC	2
8	Z71535	Hex Bolt, 1/2NC x 3-1/2"	1
9	Z71435	Hex Bolt, 7/16NC x 3-1/2"	1
10	Z73142	SAE Washer, 7/16"	2
11	Z72241	Hex Lock Nut, 7/16NC	1
12	Z71515	Hex Bolt, 1/2NC x 1-1/2"	1

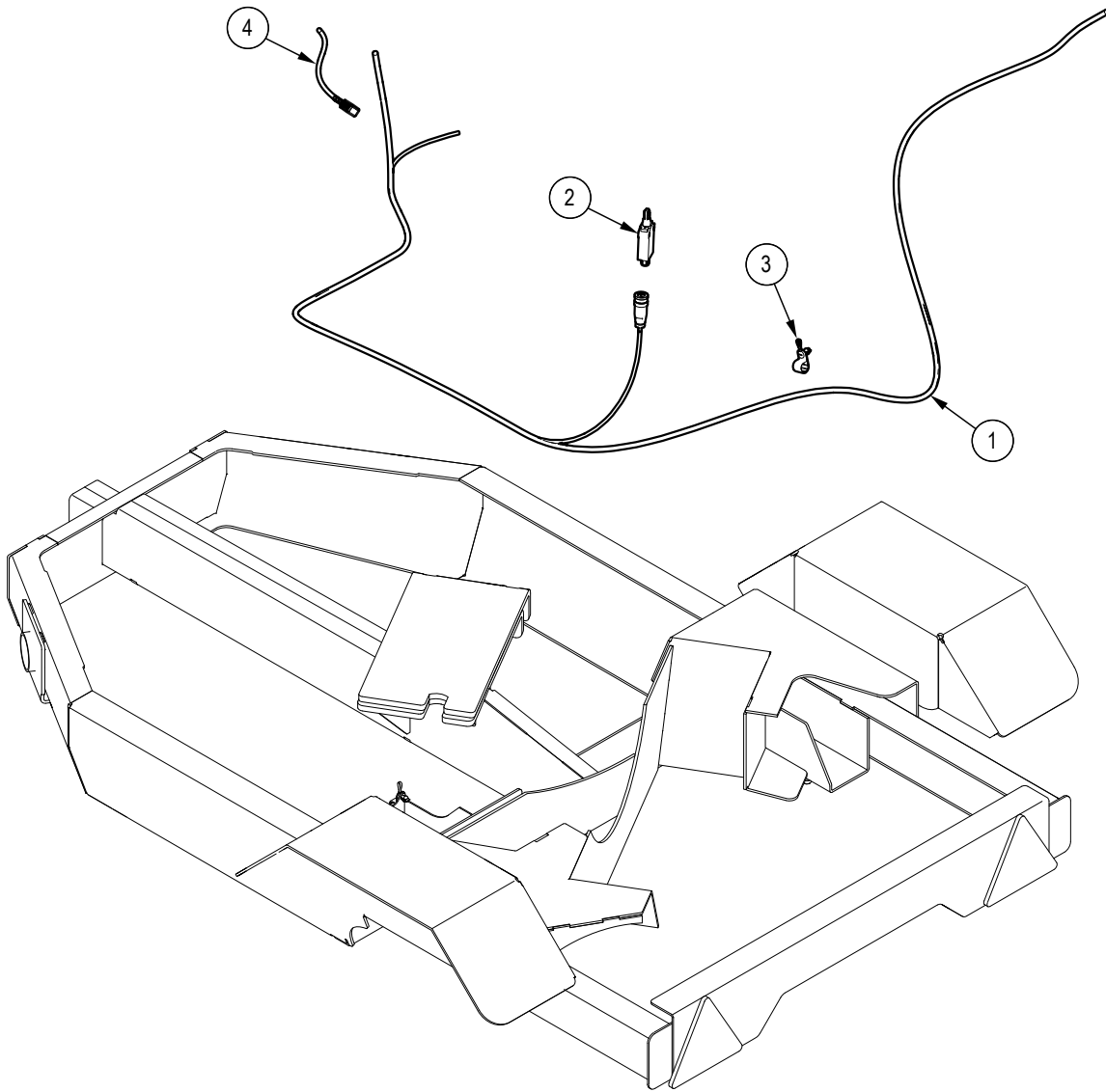
Wheel and Idler Hub



Item	Part No.	Description	Qty
1	Z28301	Double Lip Seal, 1-1/4"	2
2	Z23201	Roller Bearing	4
3	Z91201	Hub, 1000lbs x 4on4	2

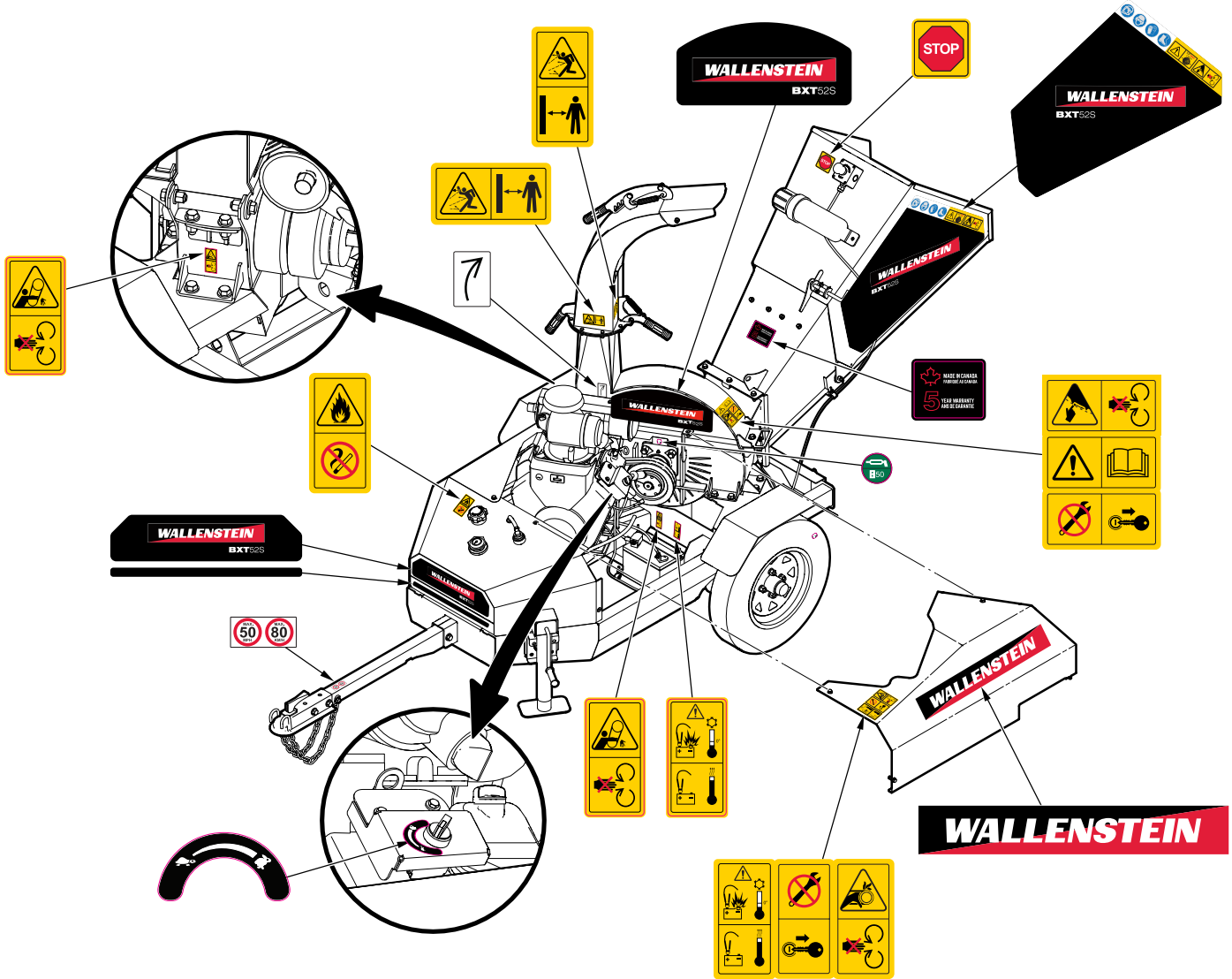
Item	Part No.	Description	Qty
4	Z91801	Dust Cap, 1.98 Bore	2
5	Z91302	5.30-12 LRC 8PR P811 4on4"	2
6	Z72931	Lug Nut, 1/2NF	8
7	Z29201	Grease Fitting, MP02	2

Harness



Item	Part No.	Description	Qty	Item	Part No.	Description	Qty
1	1065F005	Harness, Engine Safety	1	3	Z62831	Cable Clamp, P-Type Push In 3/8	3
2	Z66115	Limit Switch, Roller Tip x M12	1	4	1063F021	Engine Idle Control Harness	1

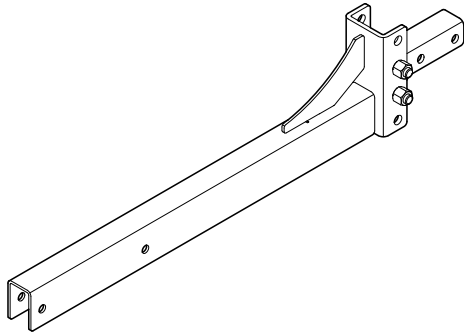
Decal Layout



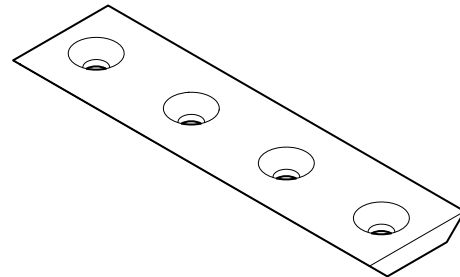
Accessories

Call your dealer for pricing and availability

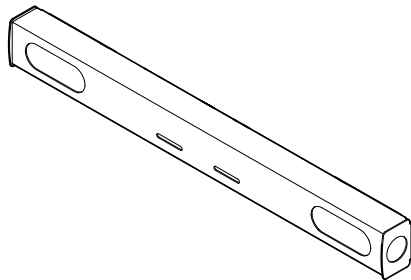
Ladder Hitch
P/N C400



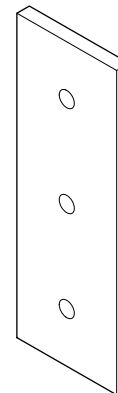
Reversible Rotor Knife
P/N 1065M010



Trailer Light Kit
P/N C601



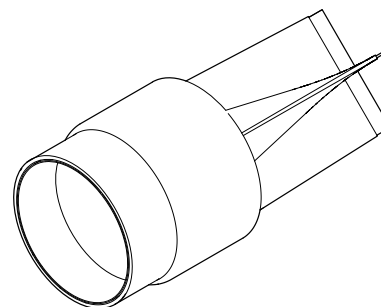
Ledger Knife
P/N 1012M204



Ledger Knife Clearance Gauge
P/N 1012L269



Spark Arrestor - Vanguard®
P/N Z47920



Bolt Torque Specifications

IMPORTANT! If you replace hardware, use fasteners of the same grade.

IMPORTANT! The torque specifications in these tables are for non-greased or non-oiled threads. Do not grease or oil fastener threads unless otherwise indicated. When using a thread lock, increase the specified torque 5%.



Bolt grades are identified by the marks on top of the bolt head.

These bolt torque specification tables provide the correct torque settings for common bolts and capscrews. Tighten all bolts to the torque that is specified in the table, unless otherwise indicated. Check the bolt tightness periodically.

Imperial Bolt Torque Specifications

Bolt Diameter	Torque					
	SAE Gr. 2		SAE Gr. 5		SAE Gr. 8	
	lbf•ft	N•m	lbf•ft	N•m	lbf•ft	N•m
1/4 inch	6	8	9	12	12	17
5/16 inch	10	13	19	25	27	36
3/8 inch	20	27	33	45	45	63
7/16 inch	30	41	53	72	75	100
1/2 inch	45	61	80	110	115	155
9/16 inch	60	95	115	155	165	220
5/8 inch	95	128	160	215	220	305
3/4 inch	165	225	290	390	400	540
7/8 inch	170	230	420	570	650	880



SAE Gr. 2



SAE Gr. 5



SAE Gr. 8

Metric Bolt Torque Specifications

Bolt Diameter	Torque			
	Gr. 8.8		Gr. 10.9	
	lbf•ft	N•m	lbf•ft	N•m
M3	0.4	0.5	1.3	1.8
M4	2.2	3	3.3	4.5
M6	7	10	11	15
M8	18	25	26	35
M10	37	50	52	70
M12	66	90	92	125
M14	83	112	116	158
M16	166	225	229	310
M20	321	435	450	610
M30	1,103	1,495	1,550	2,100



8.8



10.9

Lug Nut Torque Specifications

⚠ WARNING!

Wheel lug nuts must be installed and kept at the correct torque to prevent loose wheels, broken studs, or possible separation of a wheel from the axle.

It is an extremely important safety procedure to apply and maintain the correct torque on lug nuts that secure the wheel to the trailer axle. A calibrated torque wrench is the best tool to make sure that the correct amount of torque is applied to a fastener.

Tighten wheel lug nuts to the correct torque before the first use and after each wheel removal. After a wheel is installed, check and torque the lug nuts after the first 10 miles (16 km), 25 miles (40 km), and 50 miles (80 km). Check the lug nut torque periodically thereafter.

- Start all lug nuts onto the threads by hand.
- Tighten lug nuts in stages, following the pattern shown below the Lug Nut Torque Specifications table.

Lug Nut Torque Specifications				
Wheel size	Units	First stage	Second stage	Third stage
8 inch	lbf•ft N•m	12–20 16–26	30–35 39–45.5	45–55 58.5–71.5
12 inch	lbf•ft N•m	20–25 26–32.5	35–40 45.5–52	50–60 65–78
13 inch	lbf•ft N•m	20–25 26–32.5	35–40 45.5–52	50–60 65–78
14 inch	lbf•ft N•m	20–25 26–32.5	50–60 65–78	90–120 117–156
15 inch	lbf•ft N•m	20–25 26–32.5	50–60 65–78	90–120 117–156
16 inch	lbf•ft N•m	20–25 26–32.5	50–60 65–78	90–120 117–156

Lug nut torque pattern:

