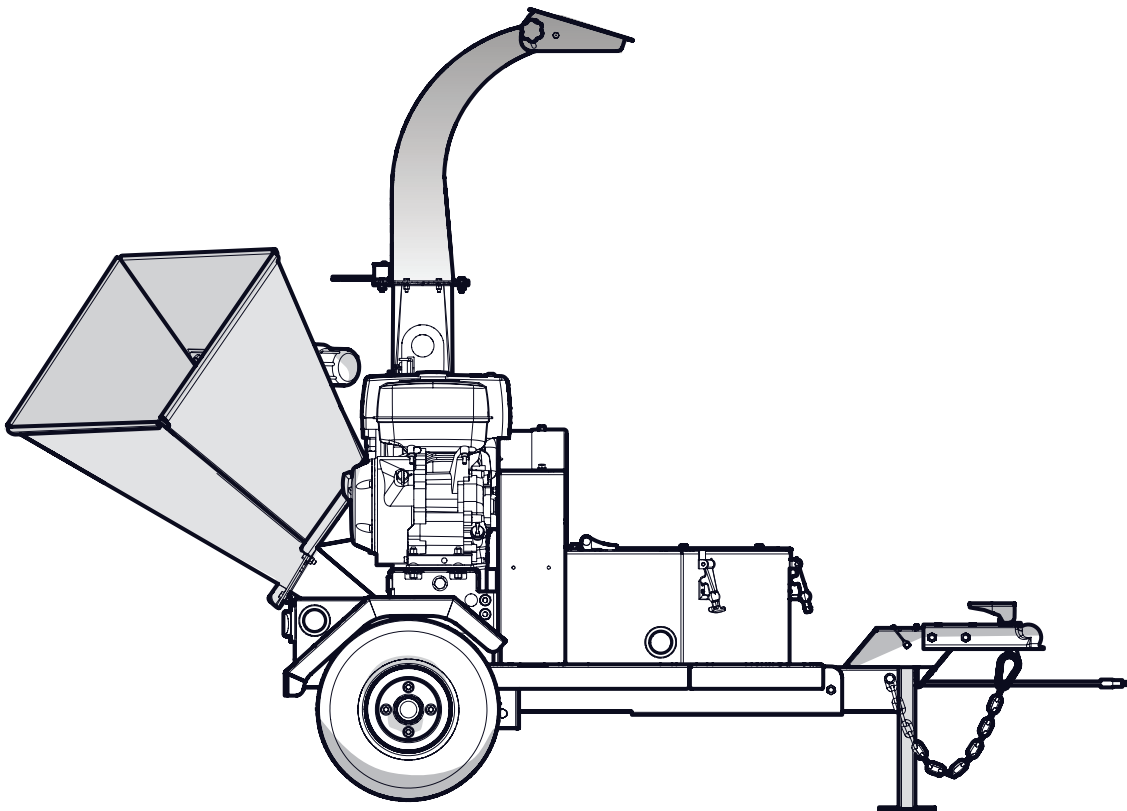


PARTS MANUAL

Serial Number 2E9US1117DS030121 & up

BXT4213 SELF-FEED TRAILER CHIPPER



Foreword

This Wallenstein parts manual is prepared to assist customers in ordering quality OEM replacement parts.

Regular maintenance combined with replacing old, worn or broken parts with the correct OEM parts is essential in prolonging the life of your Wallenstein product. Refer to this manual to identify replacement parts.

To order parts, contact your Wallenstein dealer or distributor. Have the product model and serial number handy.

If your dealer is no longer available, please go to our website: <http://wallensteinequipment.com> and click on the [Dealer Locator](#) to find the nearest dealer.

All information contained in this parts manual is current as per the revision date at the bottom of the page. Wallenstein reserves the right to change product specifications at any time without notice.

If your product specifications differ from those contained in this manual, contact Wallenstein for current information.

Reproduction of information in this parts manual is prohibited without prior written permission from Wallenstein Equipment Inc.

Wallenstein Equipment Inc. • © 2019

WARNING!

Refer to the operators manual for safe operation and maintenance.

Maintenance should be performed by trained personnel only.

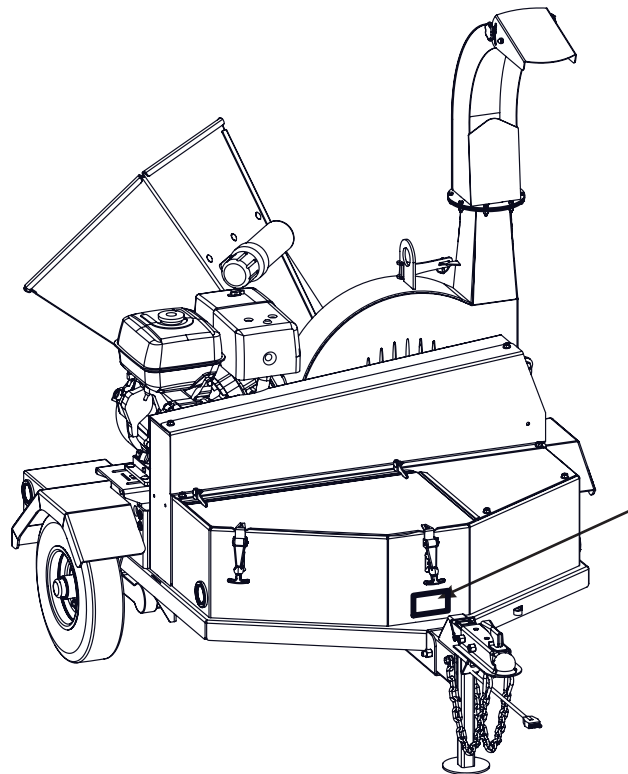
Serial Number Location

Always provide the model and serial number of your Wallenstein product when ordering parts or requesting service or other information. This information is found on the product information plate as shown below.

Record your product information here for future reference.

Model _____

Serial Number _____



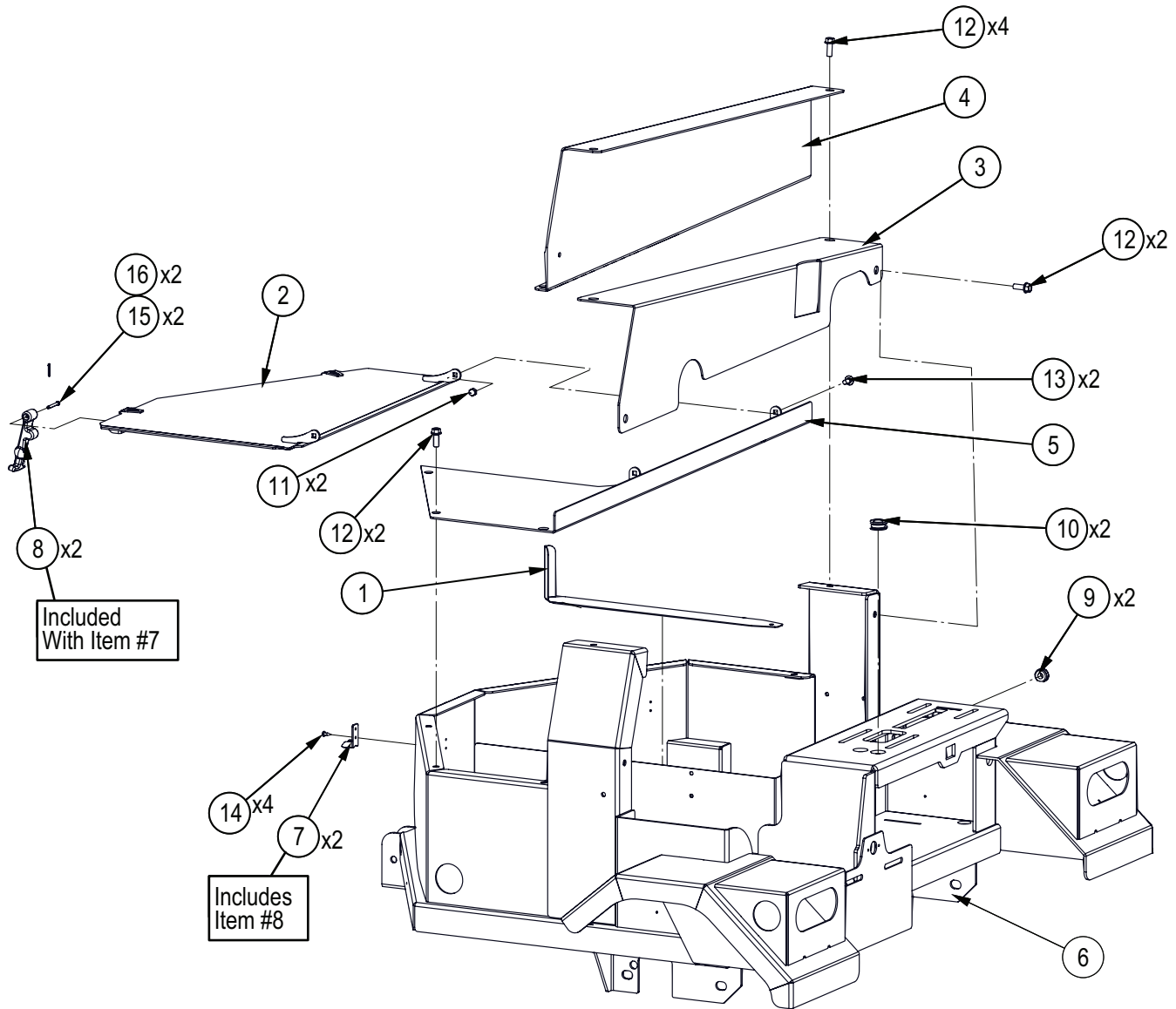
Model and Serial
Number Location

www.wallensteinequipment.com

Contents

Main Frame and Guards	4
Blower Assembly	5
Discharge Chute Assembly.....	6
Wheels and Axle.....	7
Engine and Driveline	8
Rotor	9
Self-Feed Hopper	10
Hitch Assembly	11
Idler Hub	12
Battery and Harness	13
Decal Layout.....	14
Decal Layout.....	15
Common Bolt Torque Values	17
Wheel Lug Torque Values.....	18

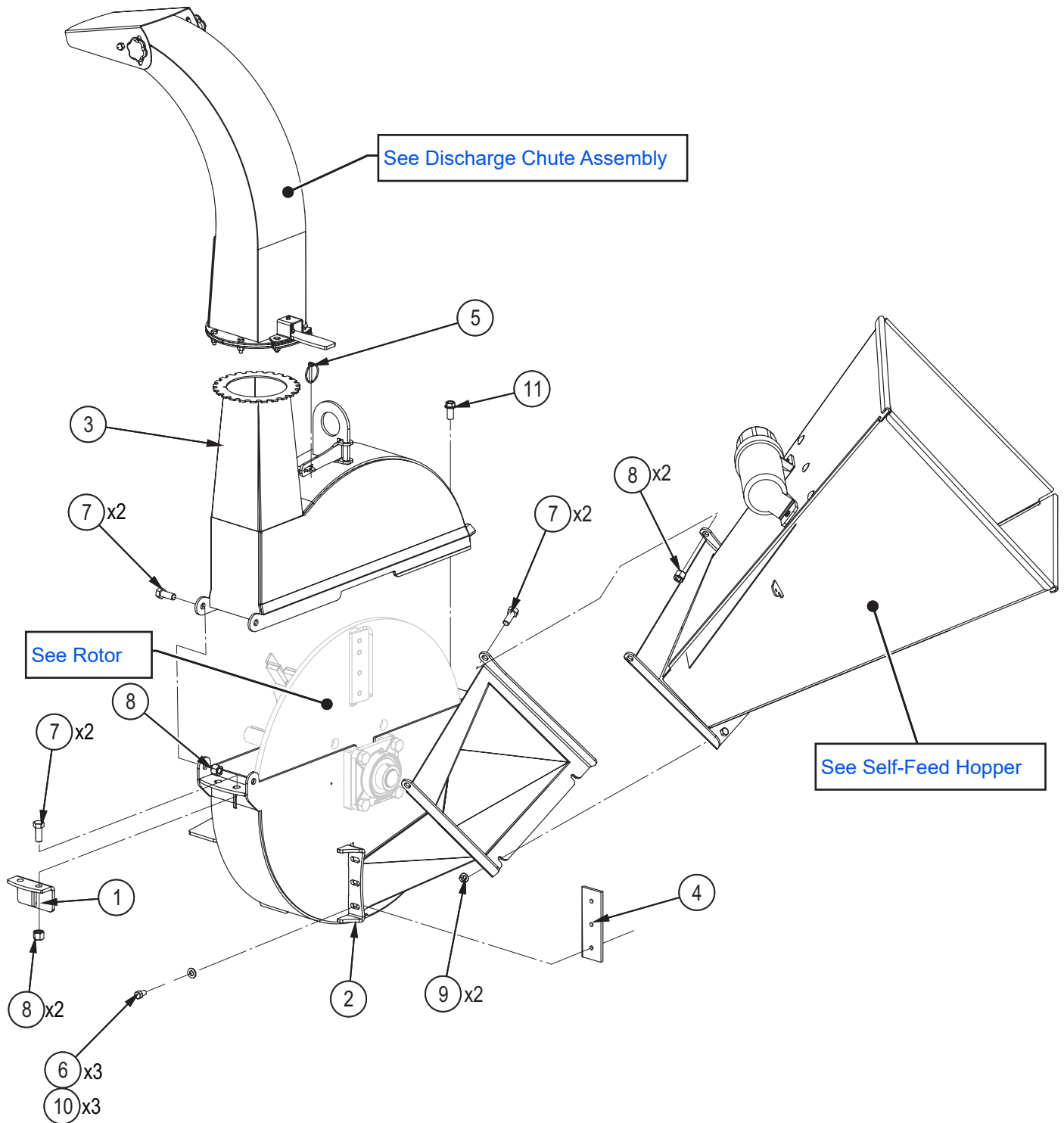
Main Frame and Guards



Item	Part No.	Description	Qty
1	1012L269	Gauge, Ledger Setting	1
2	1052A104	Toolbox Lid	1
3	1052L122	Rear Belt Guard	1
4	1052L125	Front Belt Guard	1
5	1052W106	Bay Cover	1
6	1052W502	Main Frame	1
7	Z18201	Hood Fastener, Top Bracket	2
8		Hood Fastener, Latch Strap	2
9	Z62808	Rubber Grommet, 7/16" x 1/4"	2

Item	Part No.	Description	Qty
10	Z62822	Rubber Grommet, 3/4" x 1/4"	2
11	Z72914	Acorn Nut, 5/16NC	2
12	Z76134	Flange Bolt, 3/8NC x 1"	8
13	Z76221	Carriage Bolt, 5/16NC x 3/4"	2
14	Z76711	Self-tapping Screw, #10 x 1/2"	4
15	Z11300	Clevis Pin 3/16 x 1-3/8	2
16	Z12300	Cotter Pin 3/32 X 3/4	2

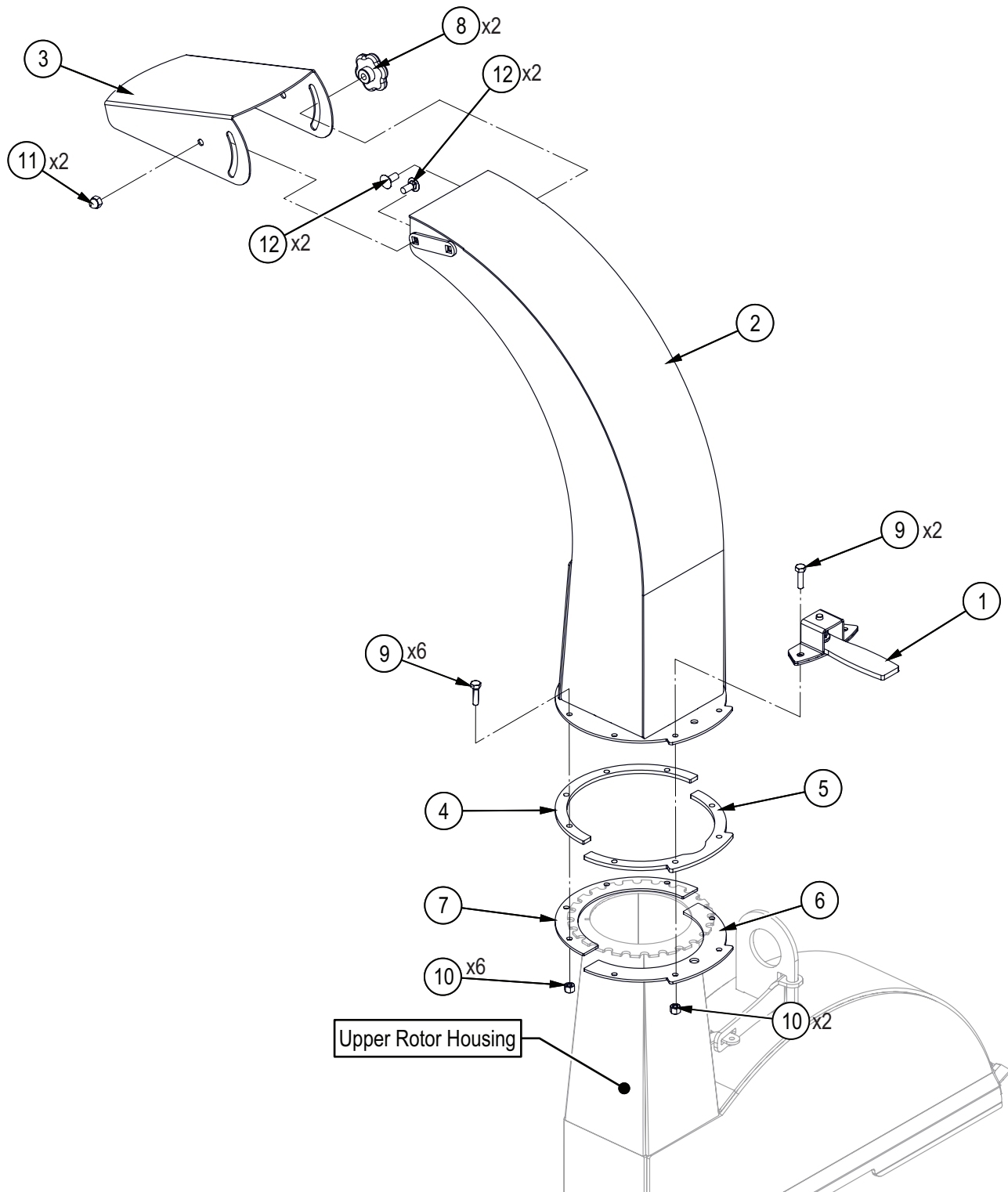
Blower Assembly



Item	Part No.	Description	Qty
1	1011W104	Twig Breaker	1
2	1052W291	Housing, Bottom Rotor	1
3	1052W292	Housing, Upper Rotor	1
4	1011M104	Knife, 4" Ledger	1
5	Z12110	Lynch Pin, 3/16"	1
6	Z71372G8	Hex Bolt, 3/8NF x 5/8" G8	3

Item	Part No.	Description	Qty
7	Z71512	Hex Bolt, 1/2NC x 1-1/4"	6
8	Z72251	Hex Lock Nut, 1/2NC	6
9	Z72531	Serrated Flange Locknut, 3/8NC	2
10	Z73131	SAE Washer, 3/8"	3
11	Z76153	Flange Bolt, 1/2NC x 1"	1

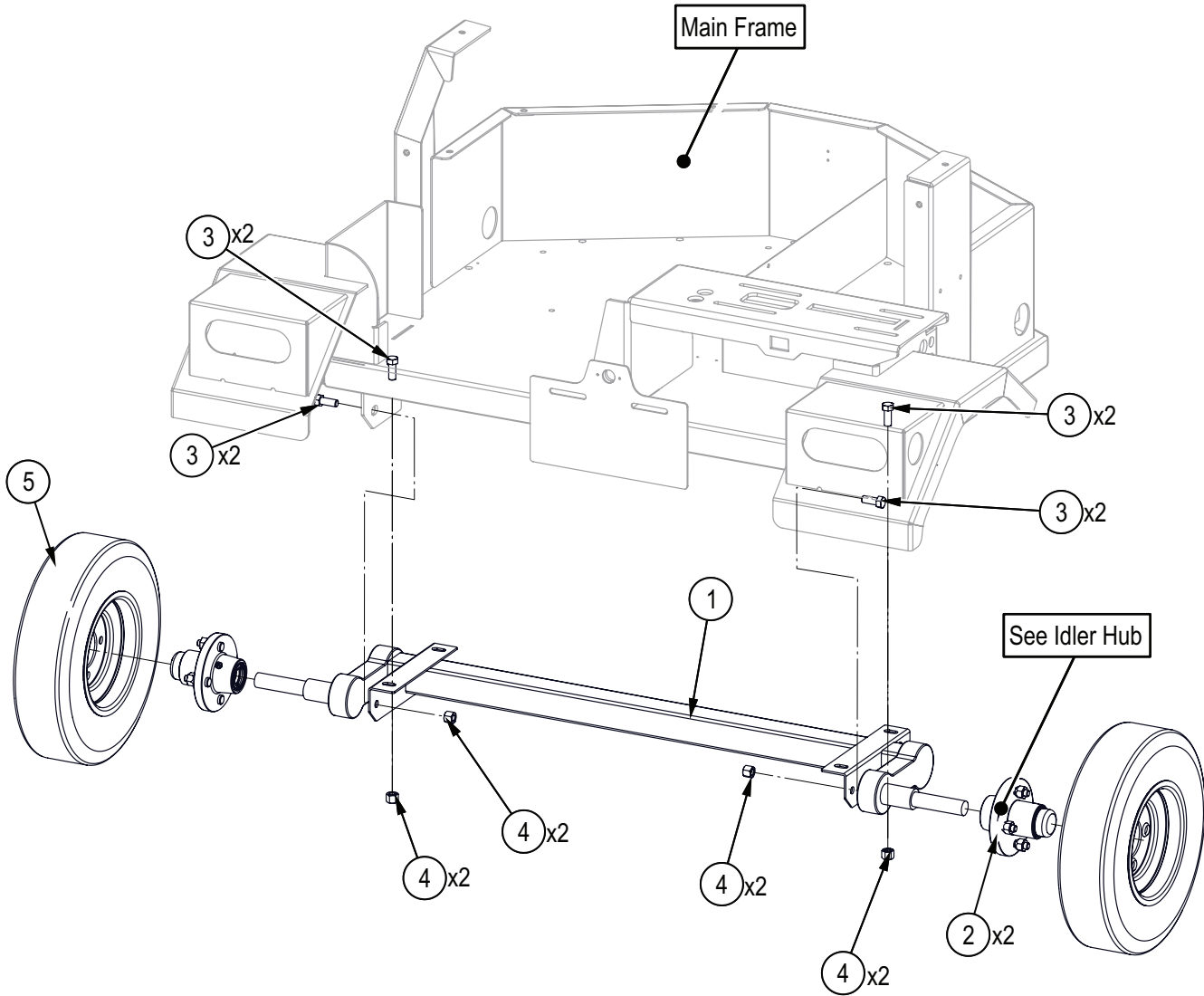
Discharge Chute Assembly



Item	Part No.	Description	Qty
1	1012W208	Assembly, Hood Latch	1
2	1016W007	Discharge Chute	1
3	1016L033	Deflector, Discharge Chute	1
4	1016L027	Plate, Spacer Ring	1
5	1016L029	Plate, Spacer Ring	1
6	1016L030	Plate, Hood Capture	1
7	1016L034	Plate, Hood Capture	1

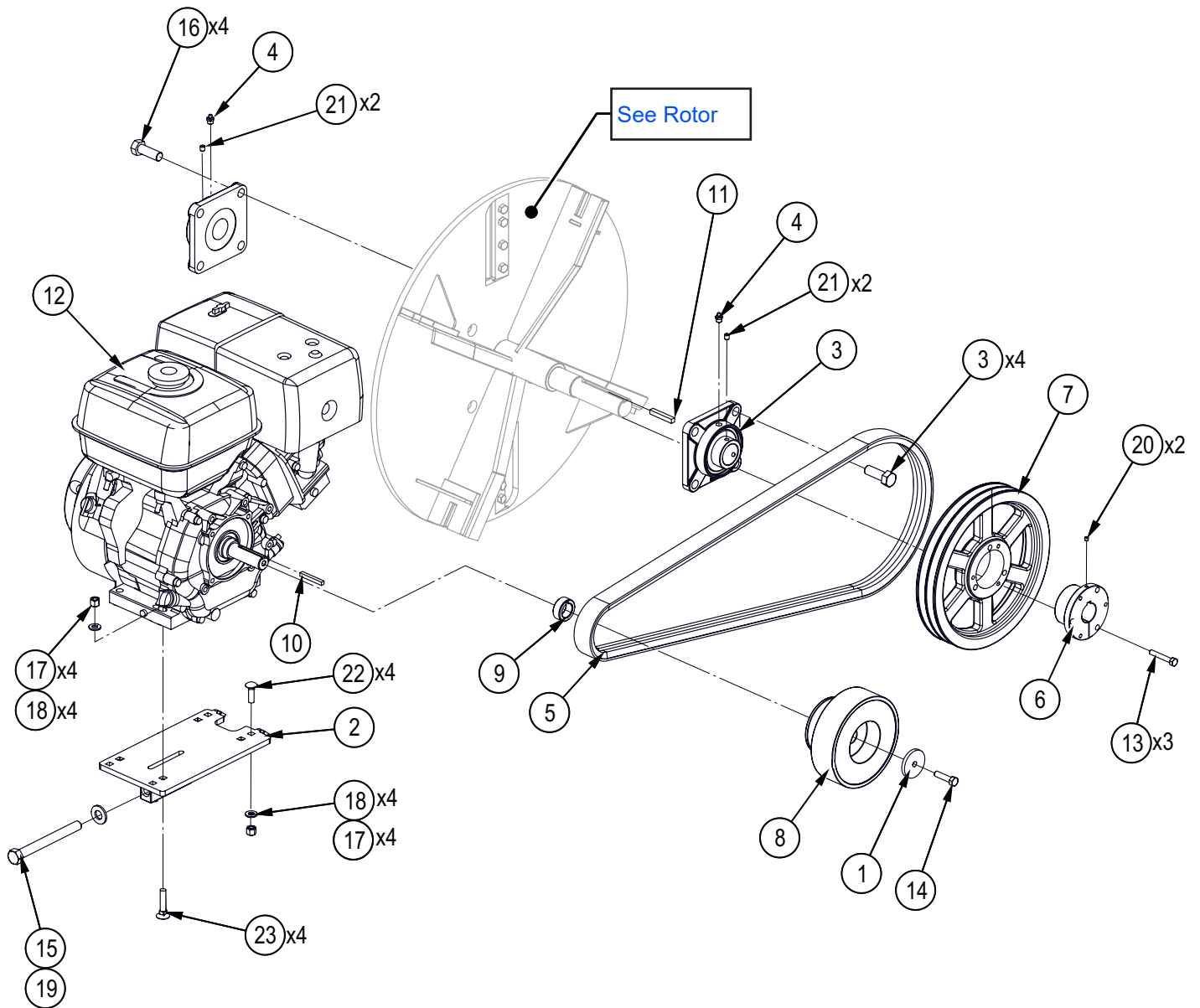
Item	Part No.	Description	Qty
8	Z19313	Hand Knob, 5/16NC Female Stud	2
9	Z71110	Hex Bolt, 1/4NC x 1"	8
10	Z72211	Hex Lock Nut, 1/4NC	8
11	Z72914	Acorn Nut, 5/16NC	2
12	Z76221	Carriage Bolt, 5/16NC x 3/4"	4

Wheels and Axle



Item	Part No.	Description	Qty
1	Z91120	#9 Full Flex Axle, 1000lbs x 52" HF Axle Only	1
2	Z91206	Idler Hub Assy, 1000lbs x 4on4" x 1-1/16"	2
3	Z71512	Hex Bolt, 1/2NC x 1-1/4"	8
4	Z72251	Hex Lock Nut, 1/2NC	8
5	Z91301	4.80-8 LRB SportTrail 4on4"	2

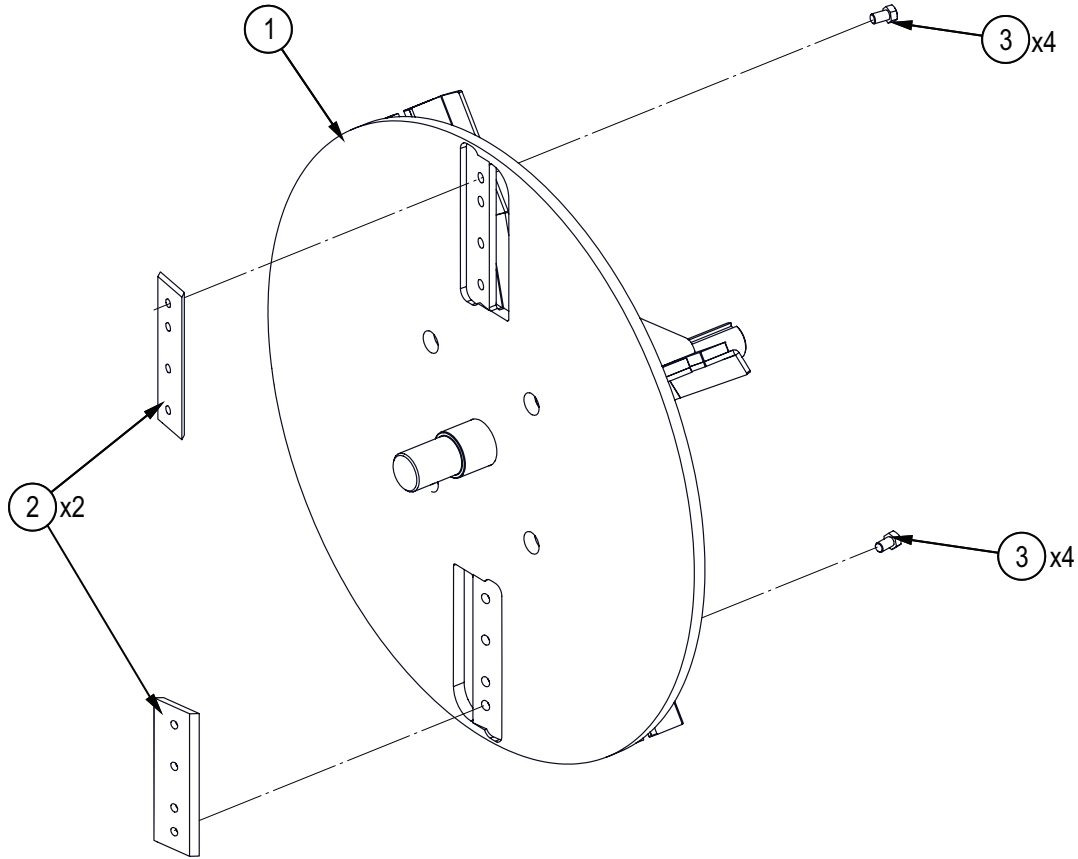
Engine and Driveline



Item	Part No.	Description	Qty
1	1052L142	Washer, Clutch Trap x 3/8"	1
2	1052W104	Engine Adjustment Plate	1
3	Z25204	4-Bolt Flange Bearing, UCF208-24	2
4	Z29201	Grease Fitting, MP02	2
5	Z41258	Double "B" x 74"	1
6	Z41501	Hub, SK x 1-3/8"	1
7	Z41701	Double Sheave, 2B110 x SK	1
8	Z41901	Centrifugal Clutch, 2B36 x 1"	1
9	Z46351	Spacer, 1" ID x 0.625" w/ Keyway	1
10	Z46531	Key, 1/4" x 1/4" x 2"	1
11	Z46541	Key, 5/16" x 5/16" x 2"	1
12	Z47147	Honda GX390UQXE6, Electric	1

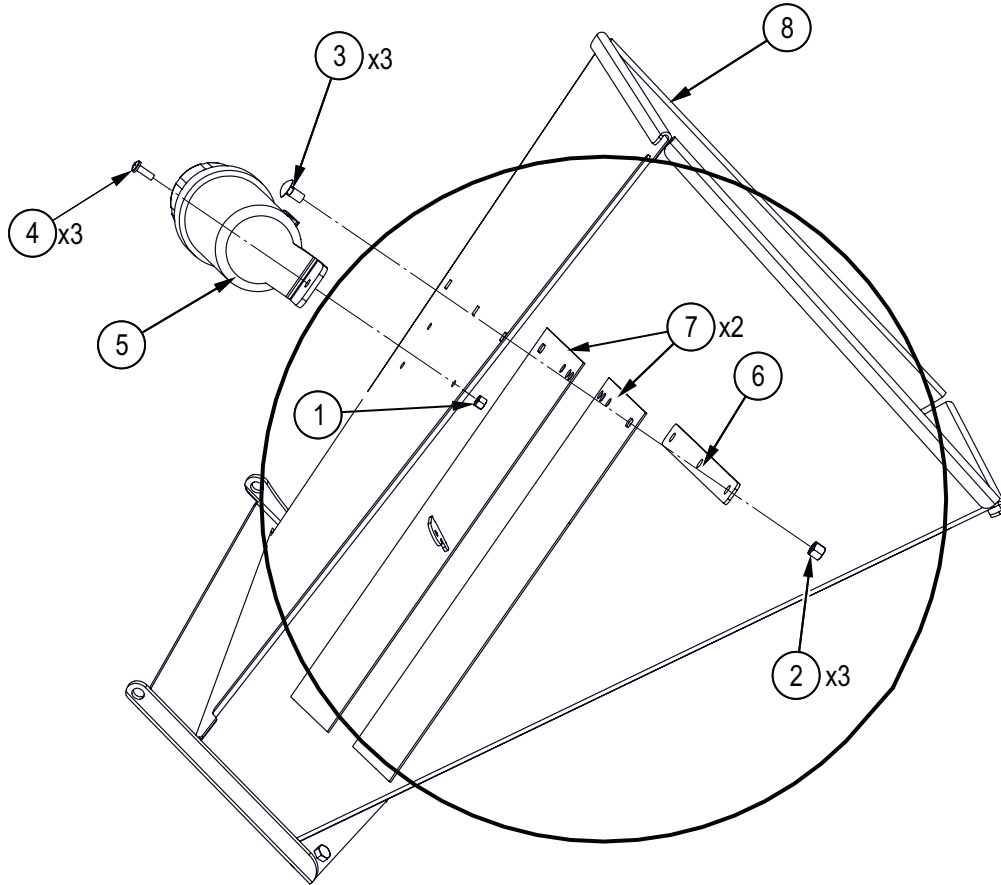
Item	Part No.	Description	Qty
13	Z71220	Hex Bolt, 5/16NC x 2"	3
14	Z71377	Hex Bolt, 3/8NF x 1-1/2"	1
15	Z71660	Hex Bolt, 5/8NC x 6"	1
16	Z71672G8	Hex Bolt, 5/8NF x 1-3/4" G8	8
17	Z72231	Hex Lock Nut, 3/8NC	8
18	Z73131	SAE Washer, 3/8"	8
19	Z73161	SAE Washer, 5/8"	1
20	Z74111	Set Screw, 1/4NC x 1/4"	1
21	Z74122	Set Screw, 5/16NF x 3/8"	4
22	Z76232	Carriage Bolt, 3/8NC x 1-1/4"	4
23	Z76632	Plow Bolt, 3/8NC x 2"	4

Rotor



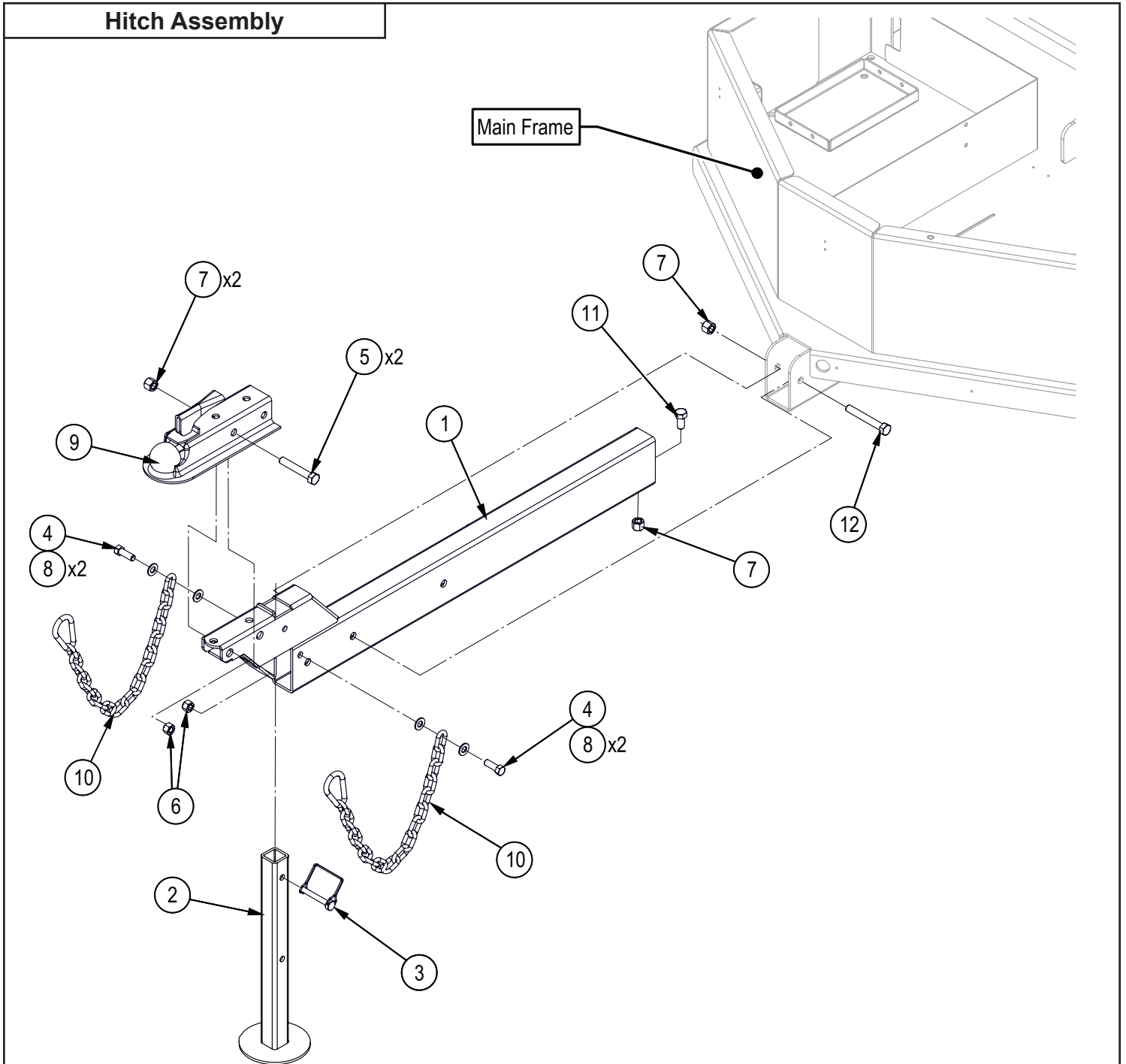
Item	Part No.	Description	Qty
1	1052W293	Rotor	1
2	1011M103	Knife, 4" Rotor	2
3	Z71372G8	Hex Bolt, 3/8NF x 5/8" G8	8

Self-Feed Hopper



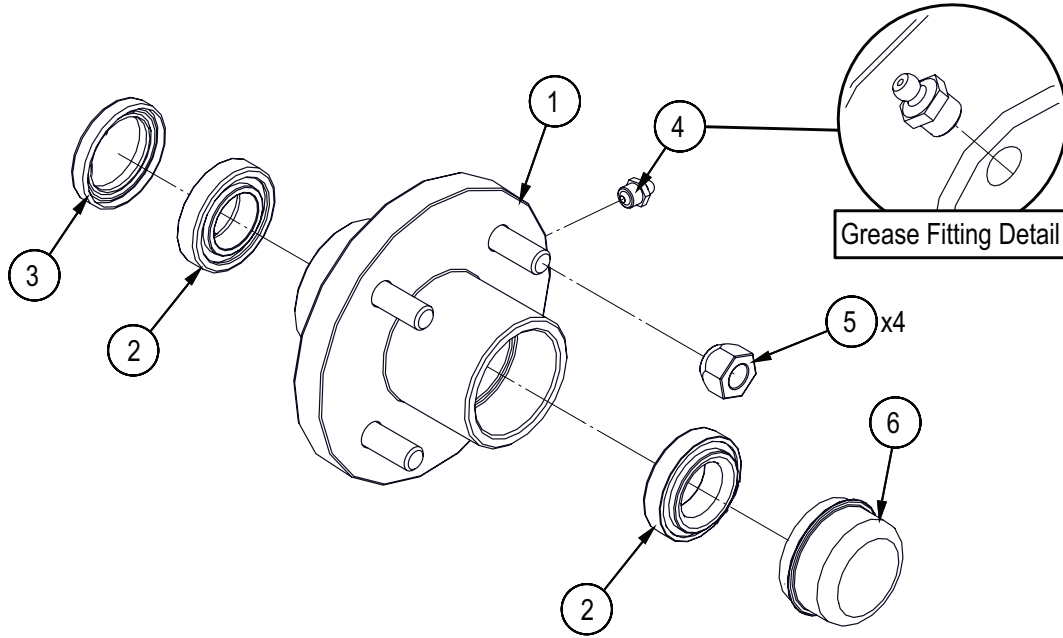
Item	Part No.	Description	Qty
1	Z72211	Hex Lock Nut, 1/4NC	3
2	Z72231	Hex Lock Nut, 3/8NC	3
3	Z76233	Carriage Bolt, 3/8NC x 3/4"	3
4	Z78301	Machine Screw, 1/4NC x 3/4"	3
5	Z96503	Manual Tube, 3-1/2" Short	1
6	1011L151	Strap, Hopper Flap	1
7	1011S103	Flap, Hopper	2
8	1011W108	Infeed Hopper	1

Hitch Assembly



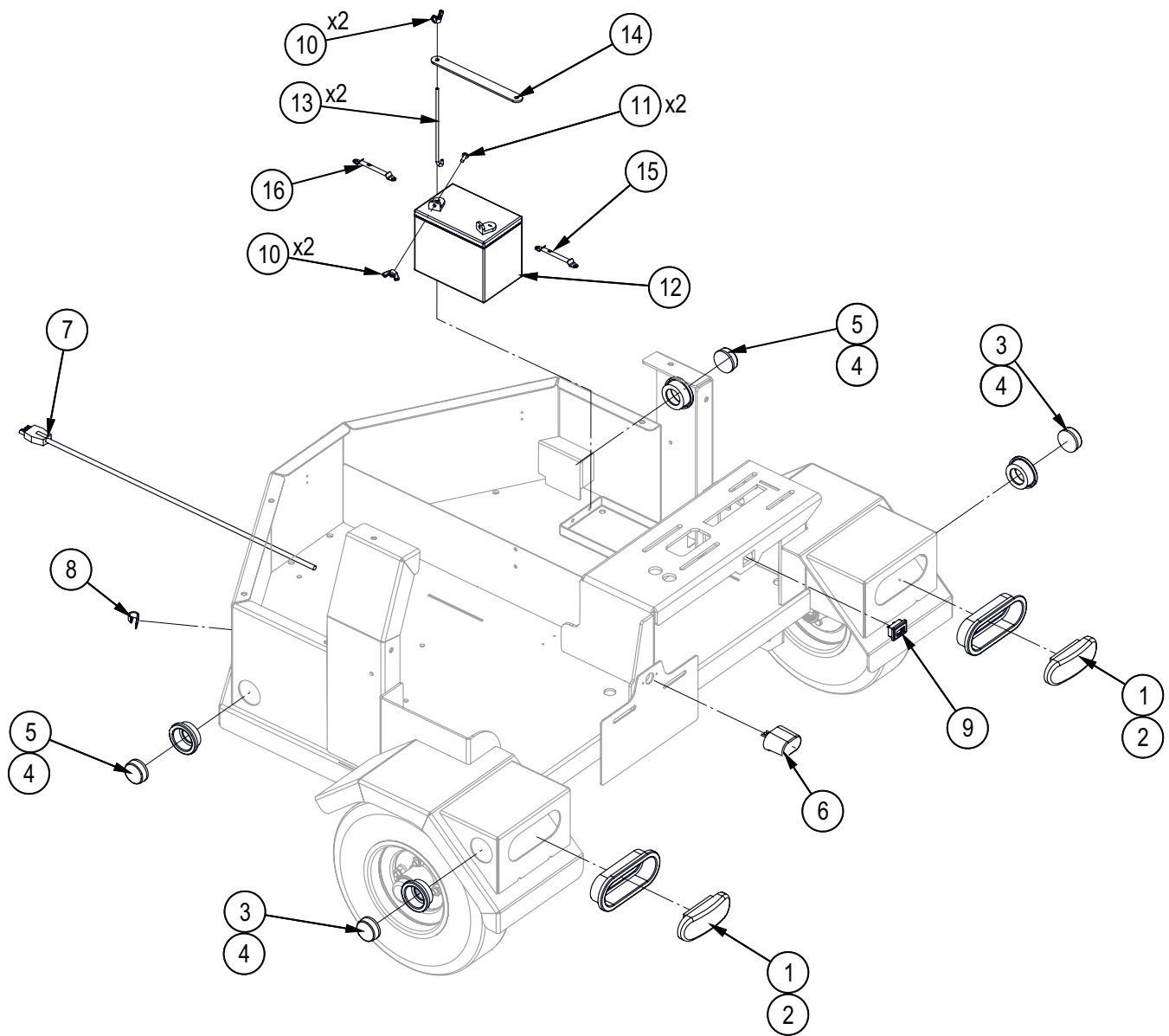
Item	Part No.	Description	Qty
1	1052W101	Main Spine	1
2	1052W102	Jack Stand	1
3	Z12432	Snap Lock Pin, 3/8" x 2-1/2"	1
4	Z71412	Hex Bolt, 7/16NC x 1-1/4"	2
5	Z71530	Hex Bolt, 1/2NC x 3"	2
6	Z72241	Hex Lock Nut, 7/16NC	2
7	Z72251	Hex Lock Nut, 1/2NC	4
8	Z73142	SAE Washer, 7/16"	4
9	Z91614	Hitch Coupler, 2" Ball x 2" x 3500lbs	1
10	Z92303	Safety Chain, 1/4" x 2ft with Snap	2
11	Z71510	Hex Bolt, 1/2NC x 1"	1
12	Z71535	Hex Bolt, 1/2NC x 3-1/2"	1

Idler Hub



Item	Part No.	Description	Qty
1	Z91201	Hub, 1000lbs x 4on4	1
2	Z23202	Roller Bearing, L44649 L44610	2
3	Z28302	Double Lip Seal, 1-1/16"	1
4	Z29201	Grease Fitting, MP02	1
5	Z72931	Lug Nut, 1/2NF	4
6	Z91801	Dust Cap, 1.98 Bore	1

Battery and Harness

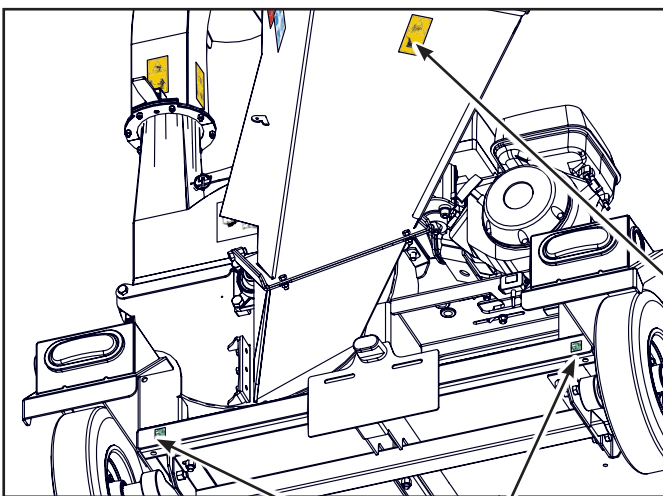
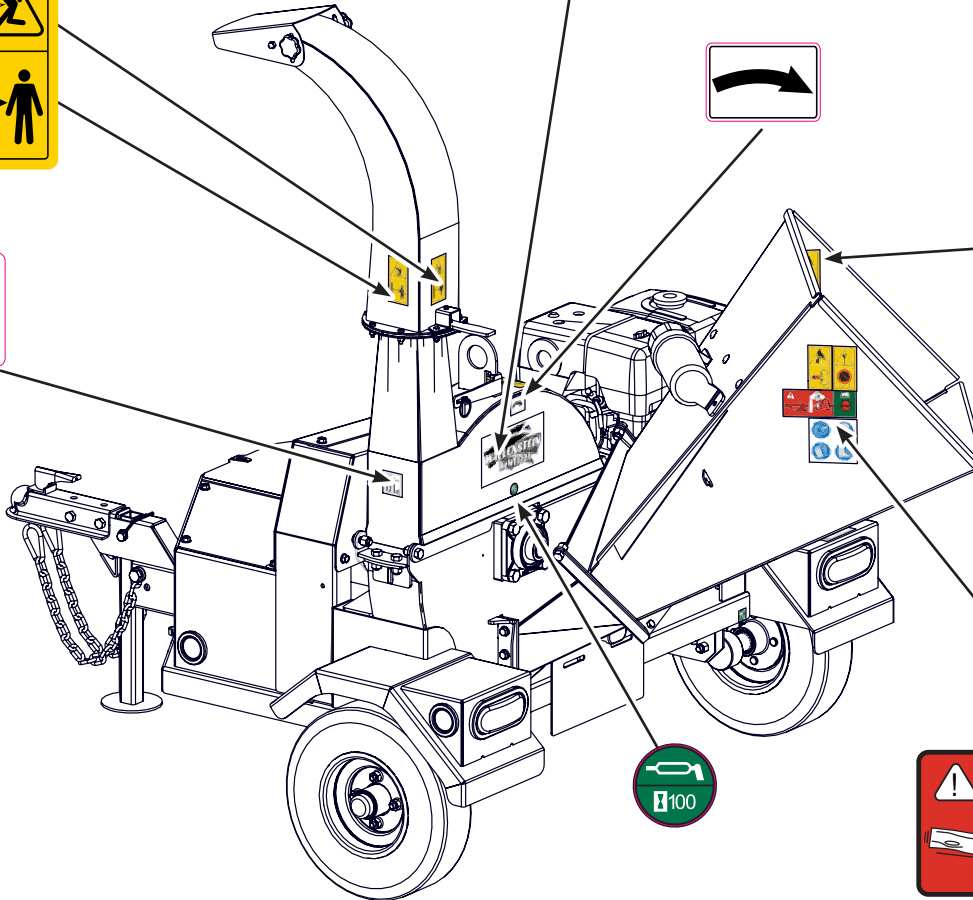


Item	Part No.	Description	Qty
1	Z61102	STT Lamp, Oval	2
2	Z61103	Grommet, Oval x Open Back	2
3	Z61201	Marker Lamp, Round x Red	2
4	Z61202	Grommet, Round x Open Back	4
5	Z61205	Marker Lamp, Round x Amber	2
6	Z61301	License Lamp, White	1
7	Z62127	Harness, BXT62 Lights	1
8	Z62815	J-Clip, 1/2" Vinyl Coated	1
9	Z64612	Tach/Hour Meter Rectangular Snap-Mount	1

Item	Part No.	Description	Qty
10	Z72921	Wing Nut, 1/4NC	4
11	Z78301	Machine Screw, 1/4NC x 3/4"	2
12	Z93201	Battery, 250CCA	1
13	Z93202	J-Hook, 1/4" x 7"	2
14	Z93207	Hold-Down Strap, 1" x 8-1/2"	1
15	Z93210	Battery Cable, Negative x 25"	1
16	Z93212	Battery Cable, Positive x 28"	1

Decal Layout

BACK VIEW



BOTTOM VIEW



Accessories

Call your dealer for pricing and availability



#1012L269 LEDGER CLEARANCE SETTING GAUGE


Common Bolt Torque Values

Checking Bolt Torque

The tables shown give correct torque values for various bolts and capscrews. Tighten all bolts to the torque values specified in the table, unless indicated otherwise. Check tightness of bolts periodically.

IMPORTANT! If replacing hardware, use fasteners of the same grade.

IMPORTANT! Torque figures indicated in the table are for non-greased or non-oiled threads. Do not grease or oil threads unless indicated otherwise. When using a thread locker, increase torque values by 5%.

 **NOTE:** Bolt grades are identified by their head markings.

Imperial Bolt Torque Specifications

Bolt Diameter	Torque Value					
	SAE Gr. 2		SAE Gr. 5		SAE Gr. 8	
	lbf•ft	N•m	lbf•ft	N•m	lbf•ft	N•m
1/4"	6	8	9	12	12	17
5/16"	10	13	19	25	27	36
3/8"	20	27	33	45	45	63
7/16"	30	41	53	72	75	100
1/2"	45	61	80	110	115	155
9/16"	60	95	115	155	165	220
5/8"	95	128	160	215	220	305
3/4"	165	225	290	390	400	540
7/8"	170	230	420	570	650	880
1"	225	345	630	850	970	1320



SAE Gr. 2



SAE Gr. 5



SAE Gr. 8

Metric Bolt Torque Specifications

Bolt Diameter	Torque Value			
	Gr. 8.8		Gr. 10.9	
	lbf•ft	N•m	lbf•ft	N•m
M3	0.4	0.5	1.3	1.8
M4	2.2	3	3.3	4.5
M6	7	10	11	15
M8	18	25	26	35
M10	37	50	52	70
M12	66	90	92	125
M14	83	112	116	158
M16	166	225	229	310
M20	321	435	450	610
M30	1,103	1 495	1,550	2 100



8.8




10.9

Wheel Lug Torque Values

It is extremely important safety procedure to apply and maintain proper wheel mounting torque on your trailer axle. Torque wrenches are the best method to assure the proper amount of torque is being applied to a fastener.

Wheel lugs should be torqued before first road use and after each wheel removal. Check and re torque after the first 10 miles (16 km), 25 miles (40 km), and again at 50 miles (80 km). Check periodically thereafter.

 **NOTE:** *Wheel lugs must be applied and maintained at the proper torque levels to prevent loose wheels, broken studs, and possible dangerous separation of wheels from your axle.*

- Start all lugs by hand to prevent cross threading.
- Tighten lugs in sequence, per wheel lug torque sequence chart.
- The tightening of the fasteners should be done in stages. Following the recommended sequence, tighten fasteners per wheel torque requirements chart.

Wheel Lug Nut Torque

Wheel Size	Units	1st Stage	2nd Stage	3rd Stage
8"	lbf•ft N•m	12–20 16–26	30–35 39–45.5	45–55 58.5–71.5
12"	lbf•ft N•m	20–25 26–32.5	35–40 45.5–52	50–60 65–78
13"	lbf•ft N•m	20–25 26–32.5	35–40 45.5–52	50–60 65–78
14"	lbf•ft N•m	20–25 26–32.5	50–60 65–78	90–120 117–156
15"	lbf•ft N•m	20–25 26–32.5	50–60 65–78	90–120 117–156
16"	lbf•ft N•m	20–25 26–32.5	50–60 65–78	90–120 117–156

Wheel Lug Torque Pattern

