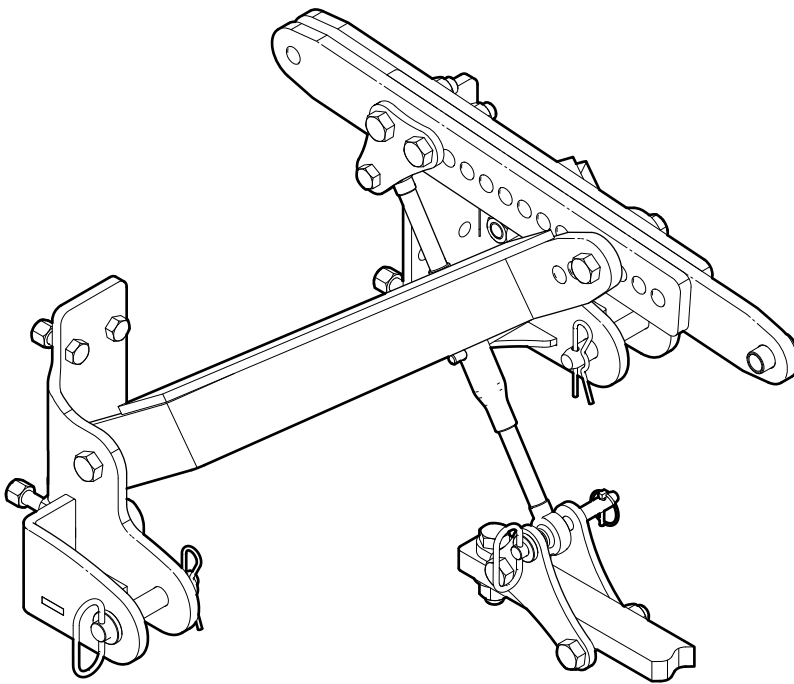


# INSTALLATION INSTRUCTIONS

---

## PT302 Backhoe 3-point Hitch Adaptor Kit

Adapts Wallenstein GX620 and GX720 Backhoes  
for 3-point Hitch Installation on CAT I Tractors



# Safety

## Safety Alert Symbol

This Symbol means:

### ATTENTION! BE ALERT ! YOUR SAFETY IS INVOLVED !

The Safety Alert Symbol identifies important safety messages on the Wallenstein product and in the manual.

When you see this symbol, be alert to the possibility of personal injury or death! Follow the instructions in the safety message.



## Signal Words

The signal words **DANGER**, **WARNING** and **CAUTION** determine the seriousness level of the warning messages in this manual. The appropriate signal word for each message in this manual has been selected using the following guidelines:

### DANGER –

Indicates an imminently hazardous situation that, if not avoided, **will** result in death or serious injury. This signal word is to be limited to the most extreme situations typically for machine components which, for functional purposes, cannot be guarded.

### WARNING –

Indicates a potentially hazardous situation that, if not avoided, **could** result in death or serious injury, and includes hazards that are exposed when guards are removed. It may also be used to alert against unsafe practices.

### CAUTION –

Indicates a potentially hazardous situation that, if not avoided, **may** result in minor or moderate injury. It may also be used to alert against unsafe practices.

**IMPORTANT** – To avoid confusing equipment protection with personal safety messages, a signal word **IMPORTANT** indicates a situation that if not avoided, could result in damage to the machine.

## Equipment Operation

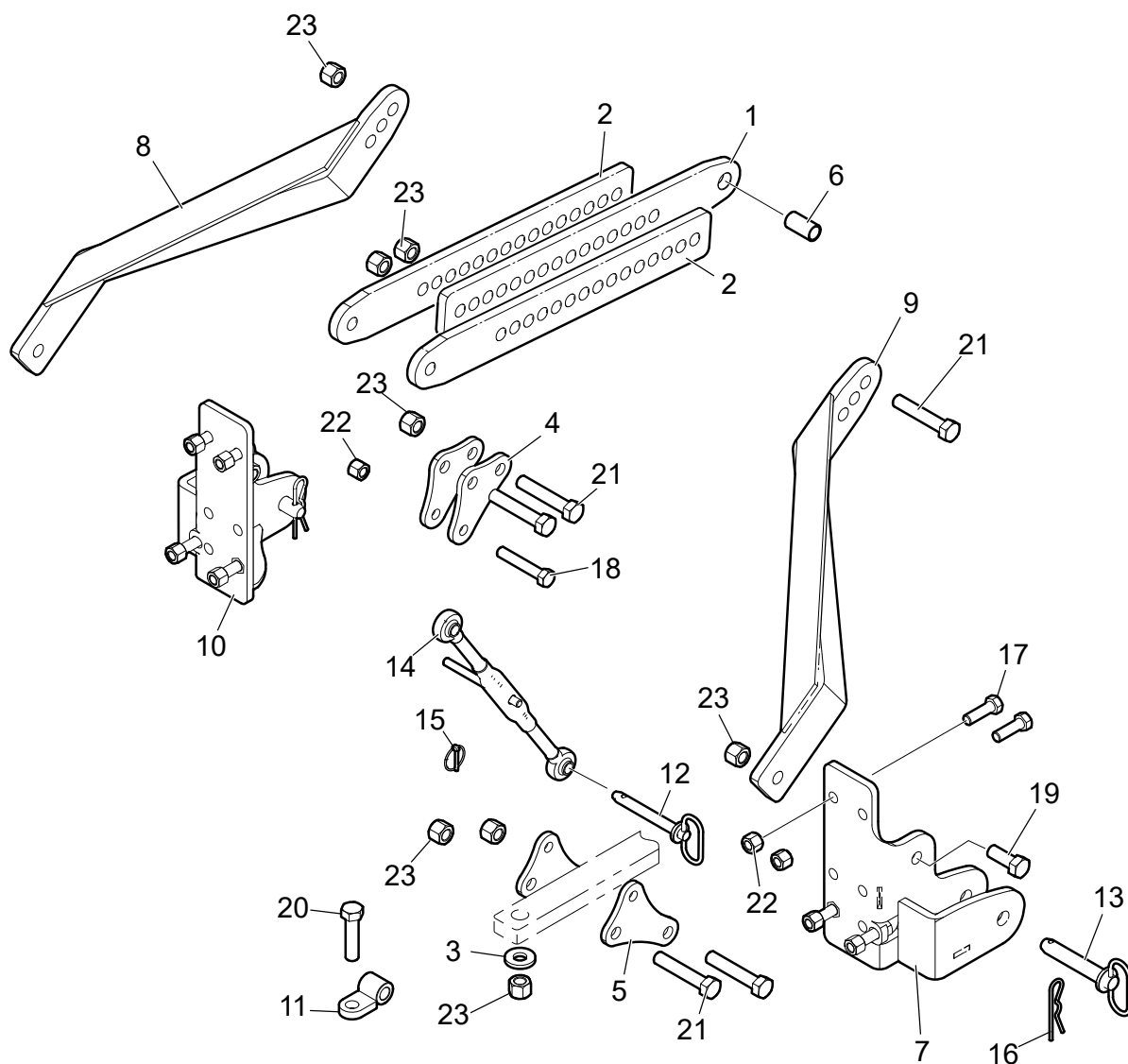


**Avoid the risk of personal injury or machine damage! Read the operator's manual before using this equipment. Carefully read all safety messages in the manual and follow all safety signs on the machine.**

## Operator Orientation

The directions left, right, front and rear as mentioned throughout this instruction, are determined when sitting in the tractor driver's seat, facing the direction of forward travel.

## PT302 Three Point Hitch Adaptor Kit Parts



| ITEM | PART NO. | DESCRIPTION              | QTY |
|------|----------|--------------------------|-----|
| 1    | 3041L204 | Bar, Center Link         | 1   |
| 2    | 3041L205 | Bar, Outer Link          | 2   |
| 3    | 3041L211 | Washer, Drawbar          | 1   |
| 4    | 3041L213 | Plate, Upper Linkage     | 2   |
| 5    | 3041L214 | Plate, Lower Linkage     | 2   |
| 6    | 3041M201 | Bushing, Drawbar Tab     | 1   |
| 7    | 3041W201 | Bracket, LH Backhoe      | 1   |
| 8    | 3041W203 | Strut, RH Backhoe        | 1   |
| 9    | 3041W204 | Strute, LH Backhoe       | 1   |
| 10   | 3041W205 | Bracket, RH Backhoe      | 1   |
| 11   | 3042W105 | Tab, Drawbar             | 1   |
| 12   | Z11232   | Hitch Pin, 5/8" x 4-1/4" | 1   |

| ITEM | PART NO. | DESCRIPTION                    | QTY |
|------|----------|--------------------------------|-----|
| 13   | Z11251   | Hitch Pin, 7/8" x 4-1/4"       | 2   |
| 14   | Z11501   | Toplink, Cat 0 x 10-1/2" x 16" | 1   |
| 15   | Z12110   | Lynch Pin, 3/16"               | 1   |
| 16   | Z12250   | Hitch Pin Clip, 3/16" x 4"     | 2   |
| 17   | Z11620   | Hex Bolt, 5/8NC x 2"           | 8   |
| 18   | Z11635   | Hex Bolt, 5/8NC x 3-1/2"       | 1   |
| 19   | Z11720   | Hex Bolt, 3/4NC x 2"           | 2   |
| 20   | Z11730   | Hex Bolt, 3/4NC x 3"           | 1   |
| 21   | Z11740   | Hex Bolt, 3/4NC x 4"           | 5   |
| 22   | Z12261   | Hex Lock Nut, 5/8NC            | 9   |
| 23   | Z12271   | Hex Lock Nut, 3/4NC            | 8   |

# Installation Instructions

## CAUTION!

Risk of a hazardous situation if kit is installed improperly or modified in any way. Damage to the machine could result. Read and follow all installation and setup instructions.

W091

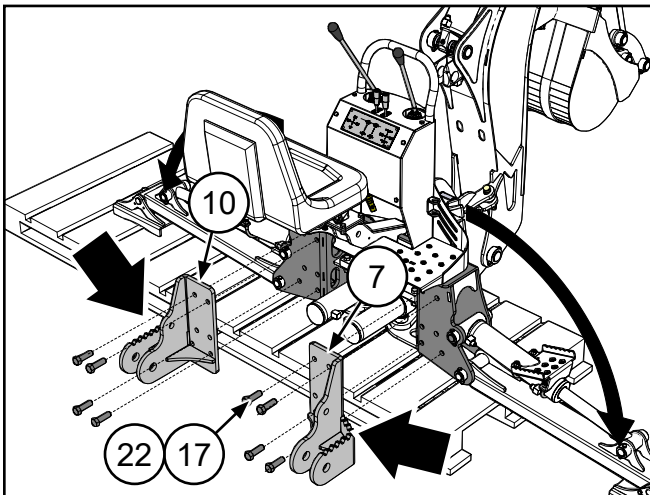
The assembly of the **PT302** Kit depends on the 3-point hitch configuration of your tractor. Illustrations in this document show typical assembly method. This procedure is one-time only. Normal 3-point hook up procedure can follow once your 3-point hitch is set up.

## Preparation

- Basic shop tools are required, including 15/16" and 1-1/8" wrenches and sockets.
- Make sure the tractor and the area around it is clean and free of debris. Park on dry, level ground with the brake applied and the engine shut off. Place the PT302 kit on the ground behind the 3-point hitch.
- Leave backhoe on the shipping skid.

## Step 1

- Unclip the safety catches (if equipped) from the backhoe stabilizer arms.
- On the backhoe control valve, push the stabilizer control levers forward to allow oil to cycle through the control valve, then manually push each stabilizer arm down.
- Assemble left- and right-hand backhoe brackets (items 7 and 10) to the backhoe. Use 4 each of **Z71620** 5/8"NC x 2" (item 17) and **Z72261** 5/8"NC Locknut (item 22).
- Torque-tighten to 180 lbf•ft (215 N•m).



## Step 2

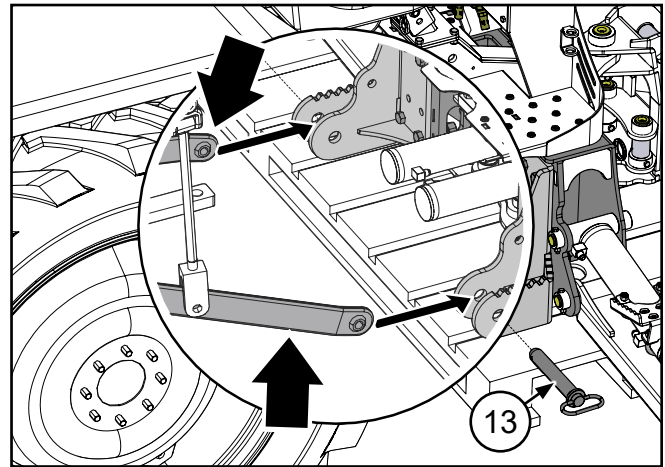
## WARNING!

Never let anyone stand between the tractor and the implement during hitching. Too fast of an approach or the operator's foot slipping from the clutch can lead to injury or fatality to the person standing nearby.

W048

Start the tractor and carefully back up to the backhoe. Attach the tractor lower lift arms to the left- and right-hand backhoe brackets. Use **Z11251** 7/8" Hitch Pin (item 13) and **Z12250** Hitch Pin Clip (item 16).

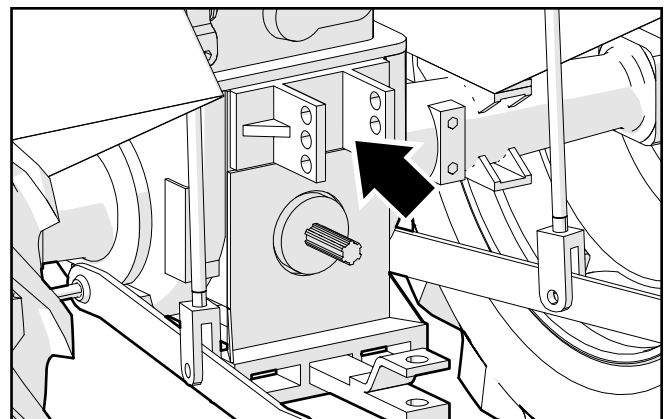
Connect the backhoe pressure and return hydraulic lines to the tractor.



## Step 3

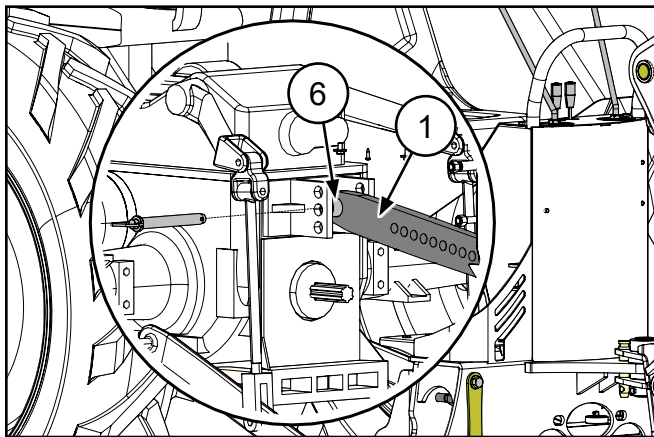
Remove the tractor's topline and pin. Check to see if **3041M201** Drawbar Tab Bushing (item 6) can fit inside the tractor's top link mount.

If the bushing is too wide, it needs to be cut to fit for Step 4.



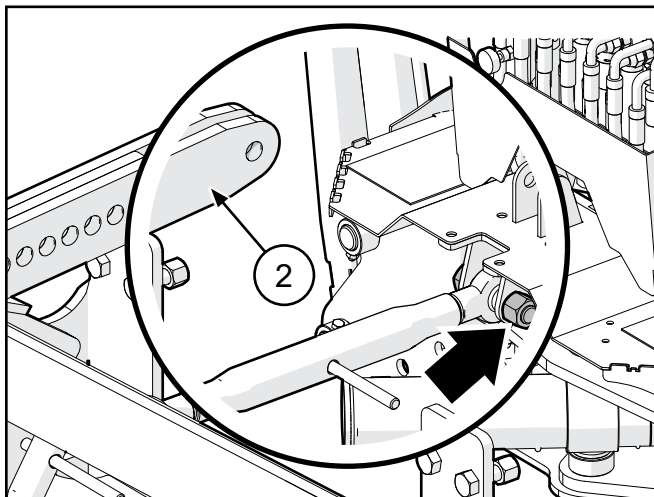
**Step 4**

Attach **3041L204** Center Link Bar (item 1) and **3041M201** Drawbar Tab Bushing (item 6) to the tractor top link mount using the tractor's hitch pin.

**Step 5**

Assemble the two **3041L205** Outer Link Bars (two of item 2) to backhoe top link mount (see arrow). Remove the topline turnbuckle and bolt from the backhoe. Use that bolt to secure the Outer Link Bars.

(The topline supplied with the backhoe is not required with the Three-point Hitch Kit.)

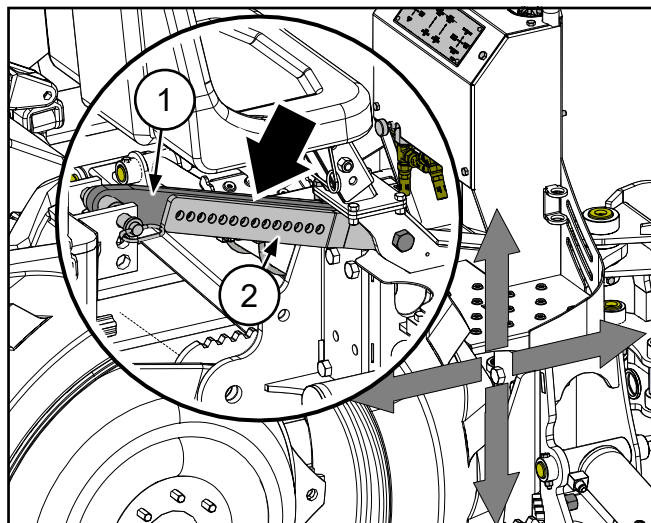
**Step 6****WARNING!**

**Risk of crushing hazard. The operator must be safely positioned in the seat before operating the backhoe. Clear the area of bystanders.**

W057

Start the tractor and raise the lower link arms so the bottom of the backhoe is approximately 13" (330 mm) off the ground.

Use the backhoe boom and stabilizers to align the Center Link (item 1) and Outer Link Bars (item 2) for Step 7.



**IMPORTANT!** Make sure the backhoe is straight (aligned with the tractor) and level.

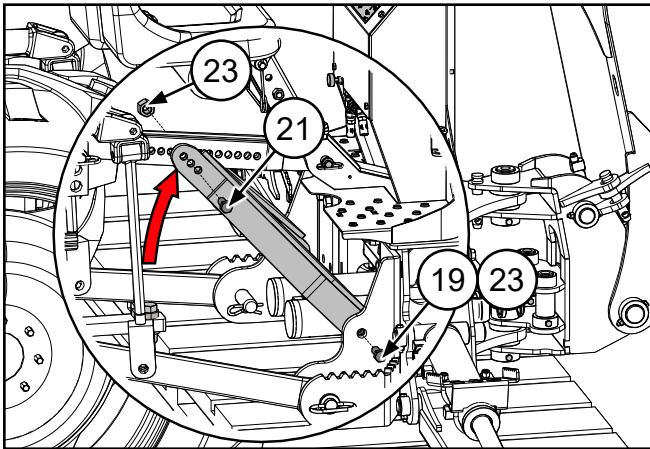
**WARNING!**

**Do not risk machine moving unexpectedly. Apply parking brake and turn engine off before proceeding.**

## Step 7

Once the backhoe is straight and level and the Center Link and Outer Link Bars are aligned, loosely bolt them together with **3041W203** RH Backhoe Strut (item 8) and **3041W204** LH backhoe Strut (item 9) using **Z71740** 3/4"NC x 4" hex head bolts (item 21) and **Z72271** 3/4" hex locknuts (item 23).

Bolt the opposite end of the struts to the backhoe brackets with **Z71720** 3/4"NC x 2" hex head bolts (item 19) and **Z72271** 3/4" hex locknuts (item 23).

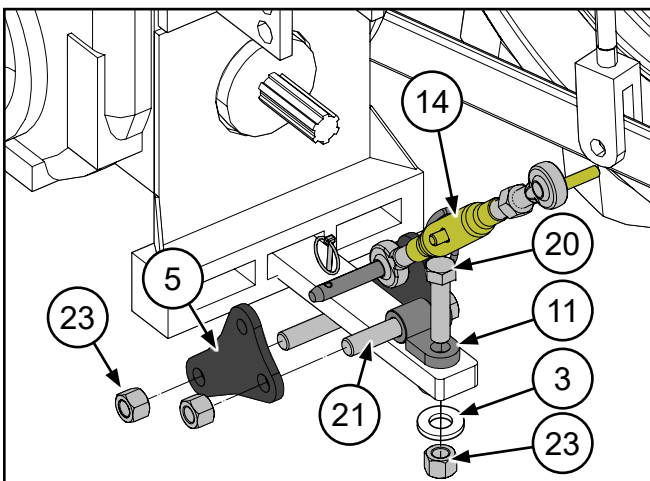


If a PTO Hydraulic Power Pack is being used with the backhoe, the drawbar brace cannot be installed. Skip Steps 8–10.

## Step 8

Assemble two **304L214** Lower Linkage Plates (item 5) to the tractor's draw bar as shown. Use three **71740** 3/4"NC x 4" hex head bolts (item 21) and **Z72271** 3/4" hex locknuts (item 23). Assemble with **3042W105** Drawbar Tab (item 11).

Fasten Drawbar Tab (item 11) to the tractor's swinging drawbar with **Z71730** 3/4"NC x 3" hex head bolt (item 20), **3041L211** Drawbar Washer (item 3), and **Z72271** 3/4" hex locknuts (item 23).

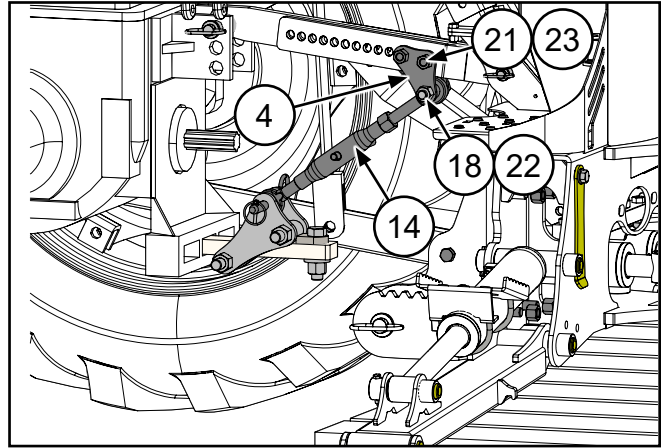


## Step 9

Assemble **3041L213** Upper Linkage Plates (item 4) to the tie back assembly as shown below. Use two **71740** 3/4"NC x 4" hex head bolts (item 21) and **Z72271** 3/4" hex locknuts (item 23).

## Step 10

Attach **Z11501** Toplink (item 14) to the upper linkage plates with **Z71635** 5/8"NC x 3-1/2" hex head bolt (item 18) and **Z72261** 5/8"NC hex locknut (item 22).



## Step 11

Check once more that your backhoe is straight and level. Adjust if required and snug up the turnbuckle.

## Step 12

Tighten up all the bolts to finalize the assembly.

## Step 13

Check backhoe functions:

- start the tractor
- lower the stabilizers
- check all functions of the backhoe
- double-check all fasteners and three-point hitch is solidly attached and secure





## **LIMITED WARRANTY**

Wallenstein products are warranted to be free of defects in materials and workmanship under normal use and service, for a period of

**Five Years for Consumer Use**

**Two Years for Commercial/Rental Use**

from the date of purchase, when operated and maintained in accordance with the operating and maintenance instructions supplied with the unit. Warranty is limited to the repair of the product and/or replacement of parts.

This warranty is extended only to the original purchaser and is not transferable.

Repairs must be done by an authorized dealer. Products will be returned to the dealer at the customer's expense. Include the original purchase receipt with any claim.

**This warranty does not cover the following:**

- 1) Normal maintenance or adjustments
- 2) Normal replacement of wearable and service parts
- 3) Consequential damage, indirect damage, or loss of profits
- 4) Damages resulting from:
  - Misuse, negligence, accident, theft or fire
  - Use of improper or insufficient fuel, fluids or lubricants
  - Use of parts or aftermarket accessories other than genuine Wallenstein parts
  - Modifications, alteration, tampering or improper repair performed by parties other than an authorized dealer
  - Any device or accessories installed by parties other than an authorized dealer
- 5) Engines. Engines are covered by the manufacturer of the engine for the warranty period they specify. For the details of your engine warranty, see your engine owner's manual. Information about engine warranty and service is also available in the FAQ section at [www.wallensteinequipment.com](http://www.wallensteinequipment.com)

## Common Bolt Torque values

### Checking Bolt Torque

The tables shown give correct torque values for various bolts and capscrews. Tighten all bolts to the torque values specified in the table, unless indicated otherwise. Check tightness of bolts periodically.

**IMPORTANT!** If replacing hardware, use fasteners of the same grade.

**IMPORTANT!** Torque figures indicated in the table are for non-greased or non-oiled threads. Do not grease or oil threads unless indicated otherwise. When using a thread locker, increase torque values by 5%.



**NOTE:** Bolt grades are identified by their head markings.

### Imperial Bolt Torque Specifications

| Bolt Diameter | Torque Value |     |           |     |           |      |
|---------------|--------------|-----|-----------|-----|-----------|------|
|               | SAE Gr. 2    |     | SAE Gr. 5 |     | SAE Gr. 8 |      |
|               | lbf•ft       | N•m | lbf•ft    | N•m | lbf•ft    | N•m  |
| 1/4"          | 6            | 8   | 9         | 12  | 12        | 17   |
| 5/16"         | 10           | 13  | 19        | 25  | 27        | 36   |
| 3/8"          | 20           | 27  | 33        | 45  | 45        | 63   |
| 7/16"         | 30           | 41  | 53        | 72  | 75        | 100  |
| 1/2"          | 45           | 61  | 80        | 110 | 115       | 155  |
| 9/16"         | 60           | 95  | 115       | 155 | 165       | 220  |
| 5/8"          | 95           | 128 | 160       | 215 | 220       | 305  |
| 3/4"          | 165          | 225 | 290       | 390 | 400       | 540  |
| 7/8"          | 170          | 230 | 420       | 570 | 650       | 880  |
| 1"            | 225          | 345 | 630       | 850 | 970       | 1320 |



SAE Gr. 2



SAE Gr. 5



SAE Gr. 8

### Metric Bolt Torque Specifications

| Bolt Diameter | Torque Value |       |          |       |
|---------------|--------------|-------|----------|-------|
|               | Gr. 8.8      |       | Gr. 10.9 |       |
|               | lbf•ft       | N•m   | lbf•ft   | N•m   |
| M3            | 0.4          | 0.5   | 1.3      | 1.8   |
| M4            | 2.2          | 3     | 3.3      | 4.5   |
| M6            | 7            | 10    | 11       | 15    |
| M8            | 18           | 25    | 26       | 35    |
| M10           | 37           | 50    | 52       | 70    |
| M12           | 66           | 90    | 92       | 125   |
| M14           | 83           | 112   | 116      | 158   |
| M16           | 166          | 225   | 229      | 310   |
| M20           | 321          | 435   | 450      | 610   |
| M30           | 1,103        | 1 495 | 1,550    | 2 100 |



8.8



10.9